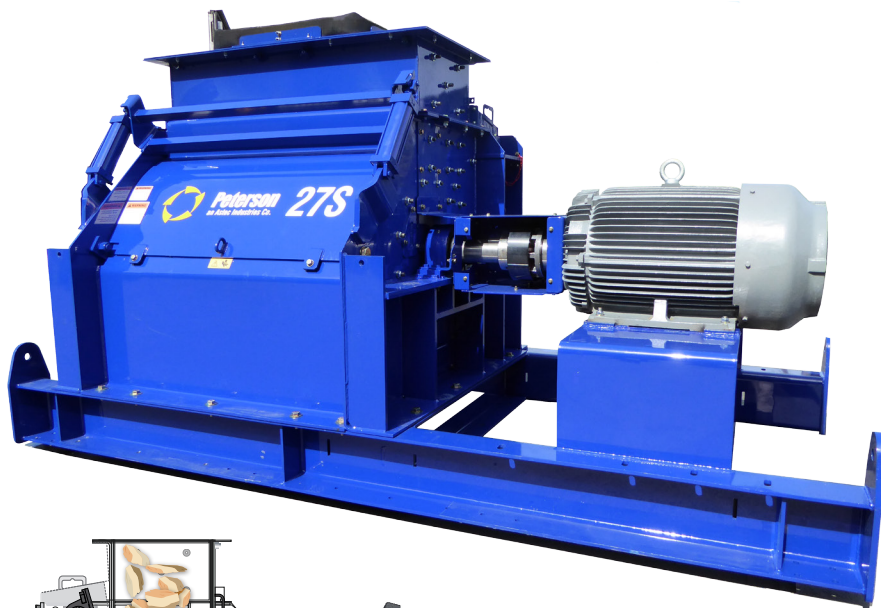
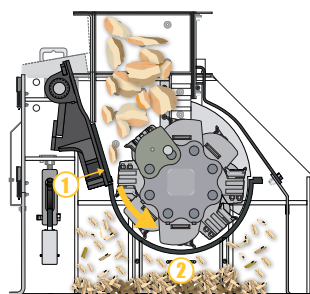


27S Electric Drop Feed Hog

Simple and Efficient Wood Waste Reduction

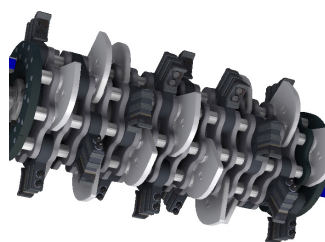


27S Installation



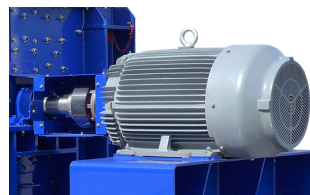
2-Stage Grinding Process

Feed material is gravity fed and fractured against a heavy-duty anvil (1) and sized through four grates (2), quickly and efficiently reducing material size.



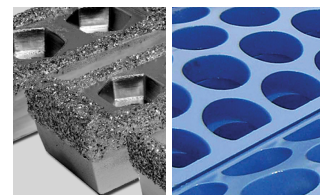
Two Rotor Styles Available

A 20-bit drum rotor, or 18-bit pinned rotor (illustrated) are available, with a wide variety of bit styles available depending on your application.



Maximum Power with a High Torque Electric Motor

The 27S uses a crusher duty electric motor that has a rugged cast-iron frame and features a dynamically balanced die-cast aluminum rotor for durability and long wear.



Use Peterson Bits and Grates for the Best Quality Product

Peterson offers a wide variety of durable, long-lasting bits and grates to enable you to produce exactly the products your customers demand.

The Peterson 27S Electric Drop Feed Hog is a wood waste processing machine, designed for applications that need a small footprint, excellent productivity, and easy maintenance.

Based on Peterson's proven 2700-series rotor and grate design, the 27S Drop Feed Hog is a simple and robust design that is ideal for sizing odd shaped materials.

The 27S uses a 150 to 400 hp (112–300 kW) electrical motor that can be powered by a VFD or soft

start controls. The 27S is a drop feed design, where material is gravity fed into the hopper, and is reduced against an anvil and sized through four grates which can be easily changed to match your product specification.

The 27S is available with either a pinned or drum rotor. The mill assembly is protected with a variety of shear pins, designed to break away under a heavy impact of trapped material, protecting your investment. The sides of the grinding chamber are made from

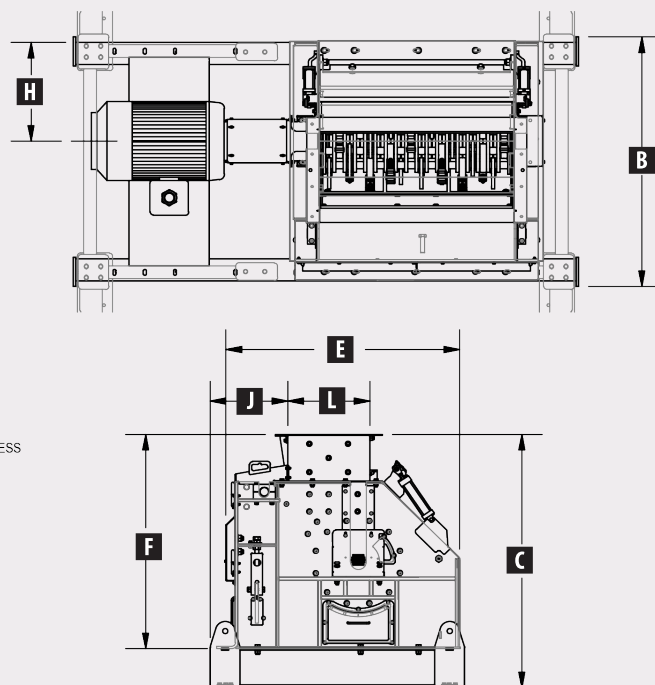
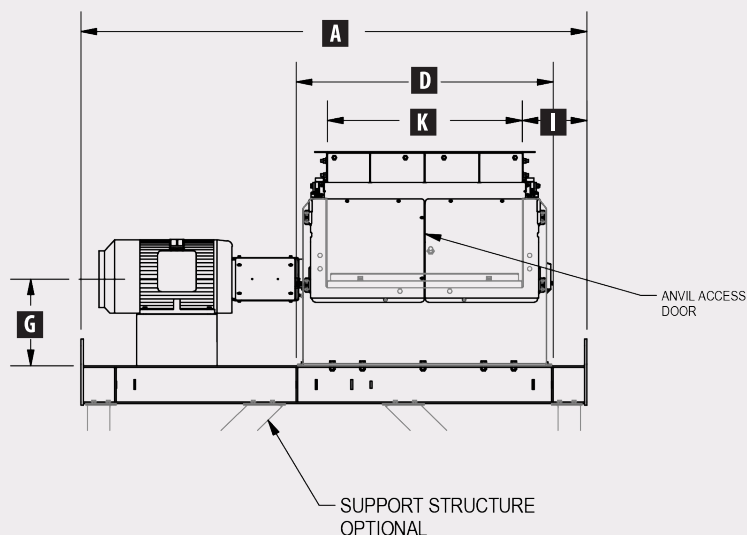
thick, abrasion resistant steel, to protect the rotor, and facilitate a long wear life.

The 27S is easily serviced by large access doors on the front and rear the machine, allowing easy bit and grate service, minimizing maintenance and machine inspection time.



Peterson
an Astec Industries Co.

27S Dimensions



27S Specifications

Dimensions

A Overall Length	13' 2" (400 cm)
B Overall Width	6' 7" (201 cm)
C Overall Height	6' 9" (204 cm)
D Grinder Length	6' 8" (203 cm)
E Grinder Width	6' 1" (184 cm)
F Grinder Height	5' 8" (173 cm)
G Direct Drive Motor Height	2' 4" (70 cm)
H Direct Drive Motor Centerline	2' 7" (79 cm)
I In-feed Length Clearance	1' 8" (51 cm)
J In-feed Width Clearance	2' (61 cm)
K In-feed Length	5' 1" (154 cm)
L In-feed Width	2' 2" (65 cm)

Weight

Machine Weight*	Approx. 18,000 lbs (8165 kg)
*Varies based on optional equipment and machine configuration.	

Powertrain

Electric Power	460 volt, 60Hz, 3-phase electric
Rotor Drive Motors	crusher duty, 150–400 hp (112–300 kW)
Belt or Direct Drive to Rotor (Direct Drive Illustrated)	

Feed System

Feed Opening (width x height)	2' 2" x 5' 1" (65 x 154 cm)
-------------------------------	-----------------------------

Rotor

Rotor Shaft Size	5 1/8" (130 mm) @ bearing, 5 3/4" (146 mm) @ center
Rotor Speed	10,362 fpm (3158 mpm) @ 2100 rpm (engine)
Rotor Width	59 3/4" (152 cm)
Rotor Diameter	32" (81 cm)
Bit Size (width x height)	2 3/4 x 5" (70 x 127 mm)
Number of Bits	20 Drum Rotor, 18 Pinned Rotor

Grates

Number of Grate Sections	4
Total Grate Area	3024 in ² (19 509 cm ²)
Grate Coverage	180 degrees
Grate Thickness	1" (25 mm)

Optional Equipment

Pinned and Drum rotor options available
Support Structure

Measurements are rounded to the nearest whole increment. Specifications subject to change without notice.

PETERSON an Astec Industries Company

PO Box 40490 • Eugene, OR 97404 • Tel 800.269.6520 Fax 541.689.0804 • www.petersoncorp.com

