

DANA SPICER REAR & FRONT AXLES  
 MAX SPEED = 4.0 MPH (6.4 KM/HR) - DIESEL  
 0.66 MPH (1.0 KM/HR) - ELECTRIC

MAX GRADEABILITY = 25%

SOLID RUBBER FRONT  
 & AIR FILLED PNEUMATIC  
 REAR TIRES SHOWN  
 (OTHER OPTIONS AVAILABLE)

LEVEL	DATE	BY	REVISION	ECN
A	9/21/15	JEF	RELEASED	
DO NOT CHANGE MANUALLY				
MAT'L		WT.		CIB:

**DIMENSIONS AND TOLERANCES IN INCHES UNLESS OTHERWISE SPECIFIED:**

BREAK CORNERS 0.005" - 0.015"

DECIMALS  
 0.X +/- .03  
 0.XX +/- 0.01  
 0.XXX +/- 0.005

FRACTIONS +/- 1/16"  
 ANGLES +/- 1 DEGREE

UNLESS OTHERWISE SPECIFIED ALL STEEL SPECIFICATIONS ARE:  
 HRS PLATE --- A36  
 HRS BAR --- A36 OR 1020  
 ALLOY BAR --- 4140/4142 HEAT TREATED

PROJECTION ANGLE

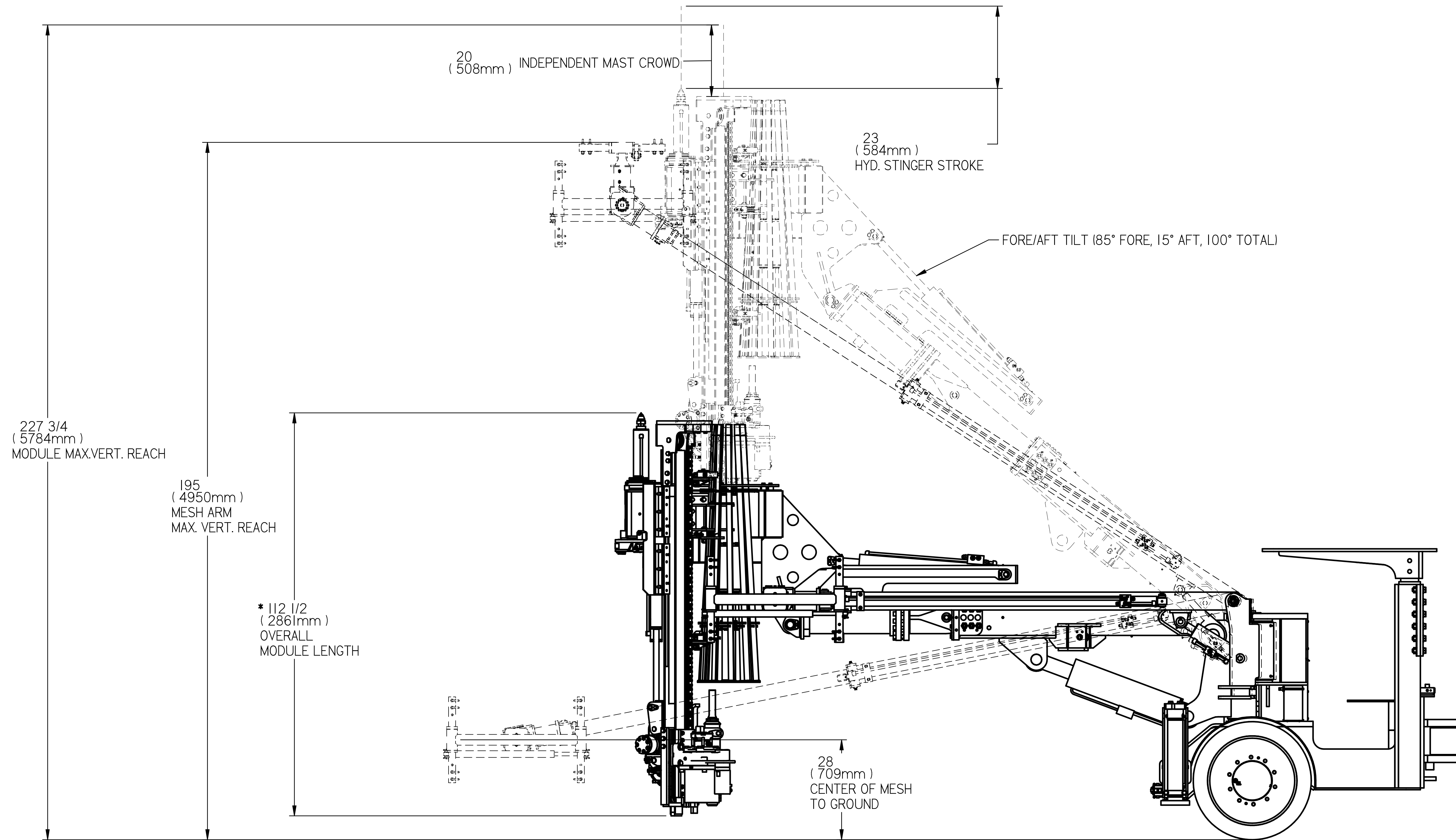
WELDING STANDARDS:  
 SEE 359370 DOCUMENT ON JHF WELDING STANDARDS AND SPECIFICATIONS. WELD SYMBOLS OR NOTES ON DRAWING SUPERCEDE 359370 DOCUMENT

**J. H. FLETCHER & CO. ©**

THIS DRAWING IN DESIGN AND DETAIL IS OUR PROPERTY AND MUST NOT BE USED EXCEPT IN CONNECTION WITH OUR WORK. ALL RIGHTS OF DESIGN OR INVENTION ARE RESERVED.

**NARROW REMOTE ROOF BOLTER N3016-AD/E**

BY	SHEET	DWG	REV
JEF	1 OF 4	572224-00	A



\* FOR LENGTHS OF OTHER MODULE TYPES SEE TABLE BELOW

### MODULE & MESH ARM HOR./VERT. REACH

BOLT MODULE OPTIONS		
BOLT TYPE	BOLT LENGTH	APPROX. MODULE LENGTH
SPLIT SET	6 FT	112-1/2" (2858 mm)
SPLIT SET	8 FT	137-1/2" (3493 mm)
RESIN	6 FT	123" (3124 mm)
RESIN	8 FT	148" (3759 mm)

DIMENSIONS AND TOLERANCES IN INCHES  
UNLESS OTHERWISE SPECIFIED:

BREAK CORNERS  
0.005" - 0.015"

DECIMALS  
0.X +/- .03  
0.XX +/- 0.01  
0.XXX +/- 0.005

FRACTIONS +/- 1/16"  
ANGLES +/- 1 DEGREE

PROJECTION ANGLE

UNLESS OTHERWISE SPECIFIED ALL STEEL  
SPECIFICATIONS ARE:  
HRS PLATE --- A36  
HRS BAR --- A36 OR 1020  
ALLOY BAR --- 4140/4142 HEAT TREATED

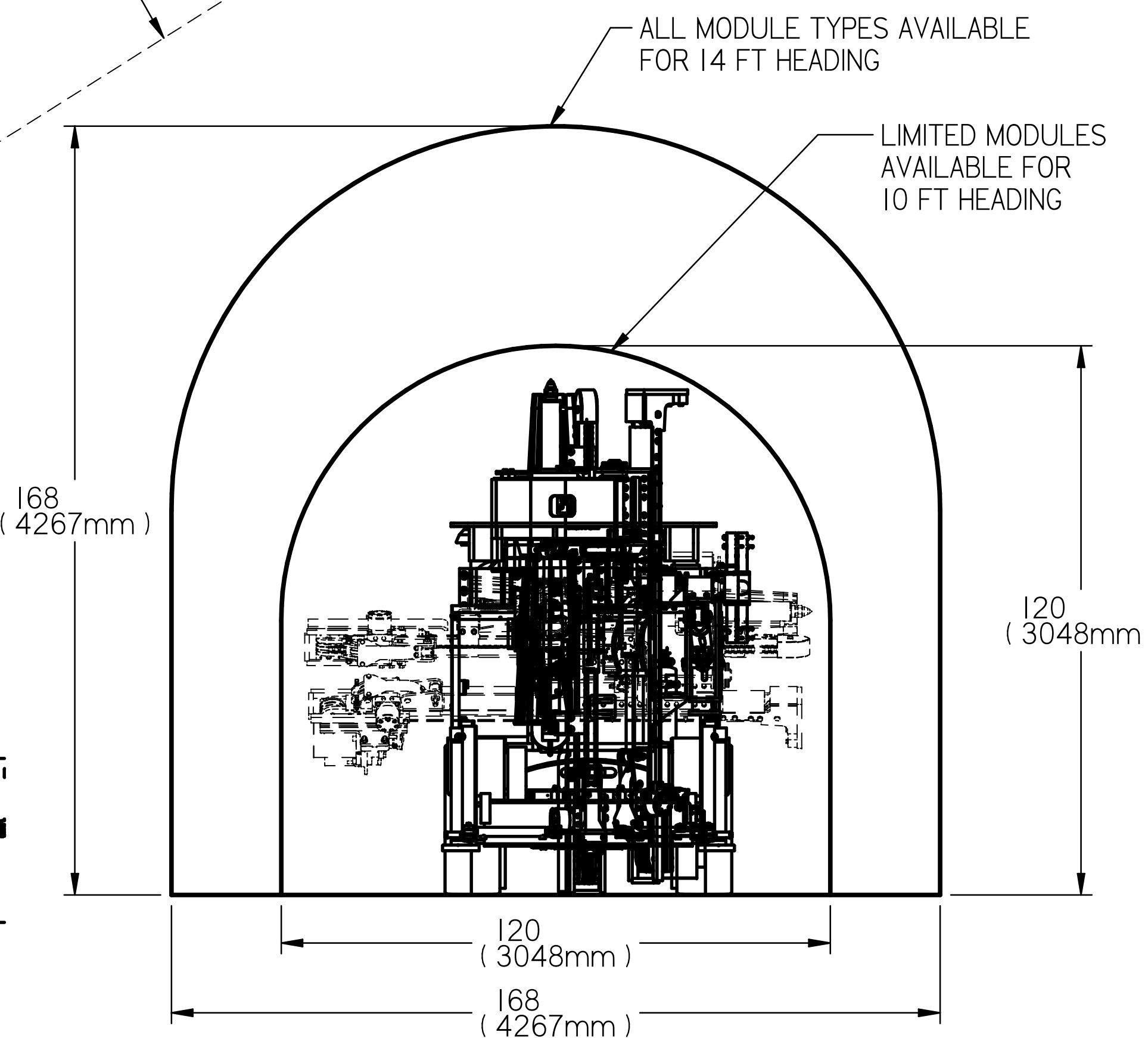
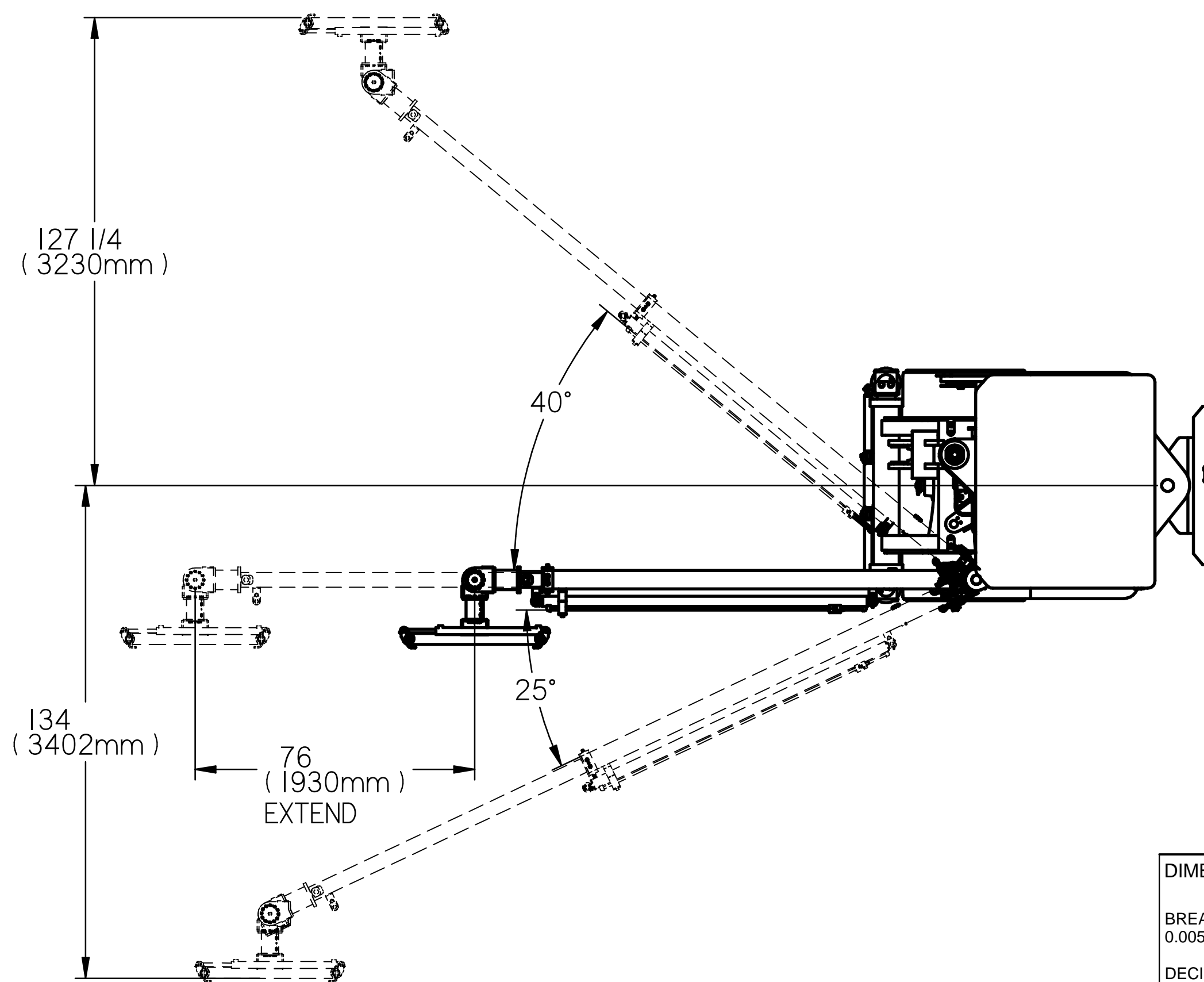
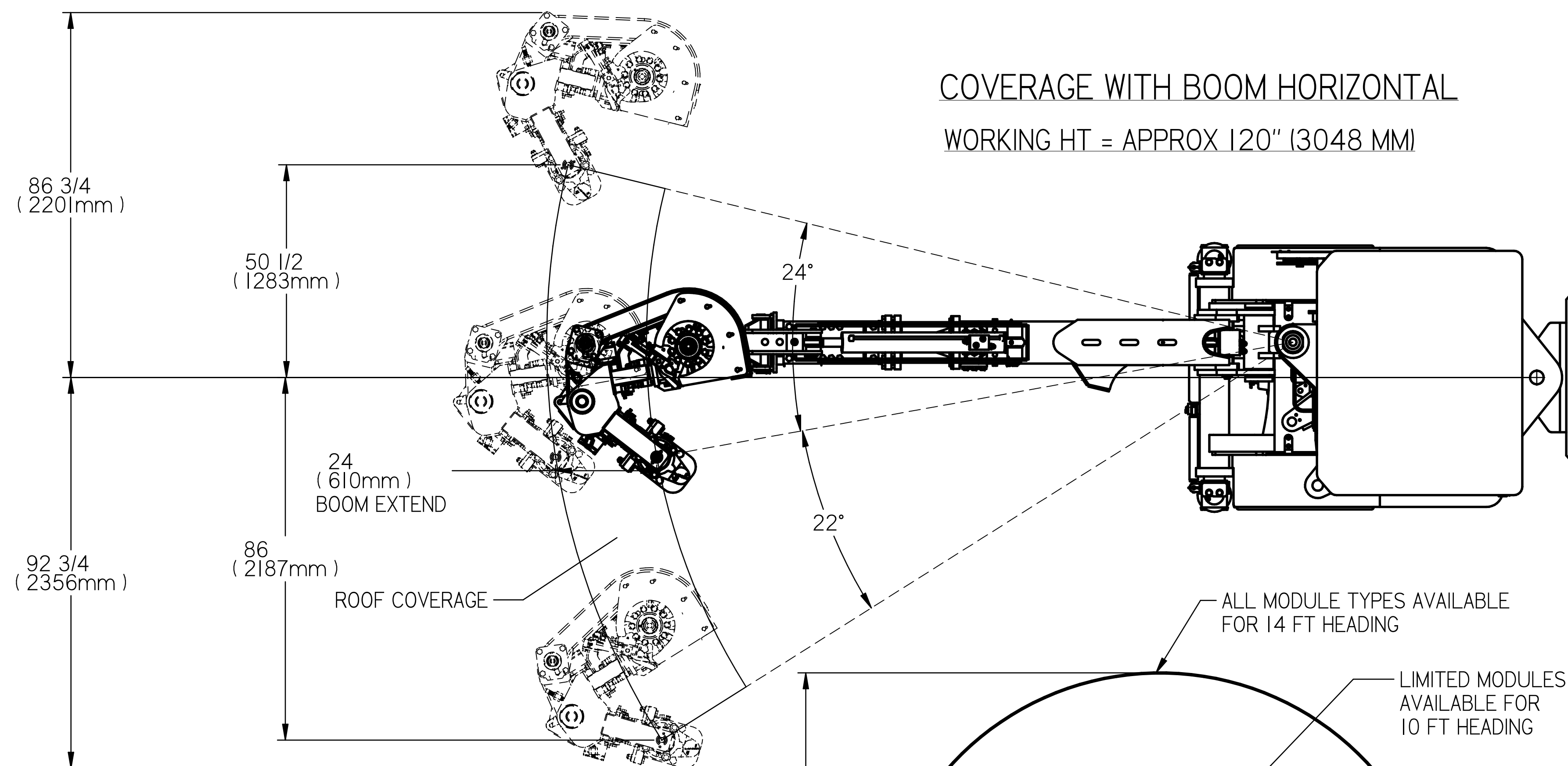
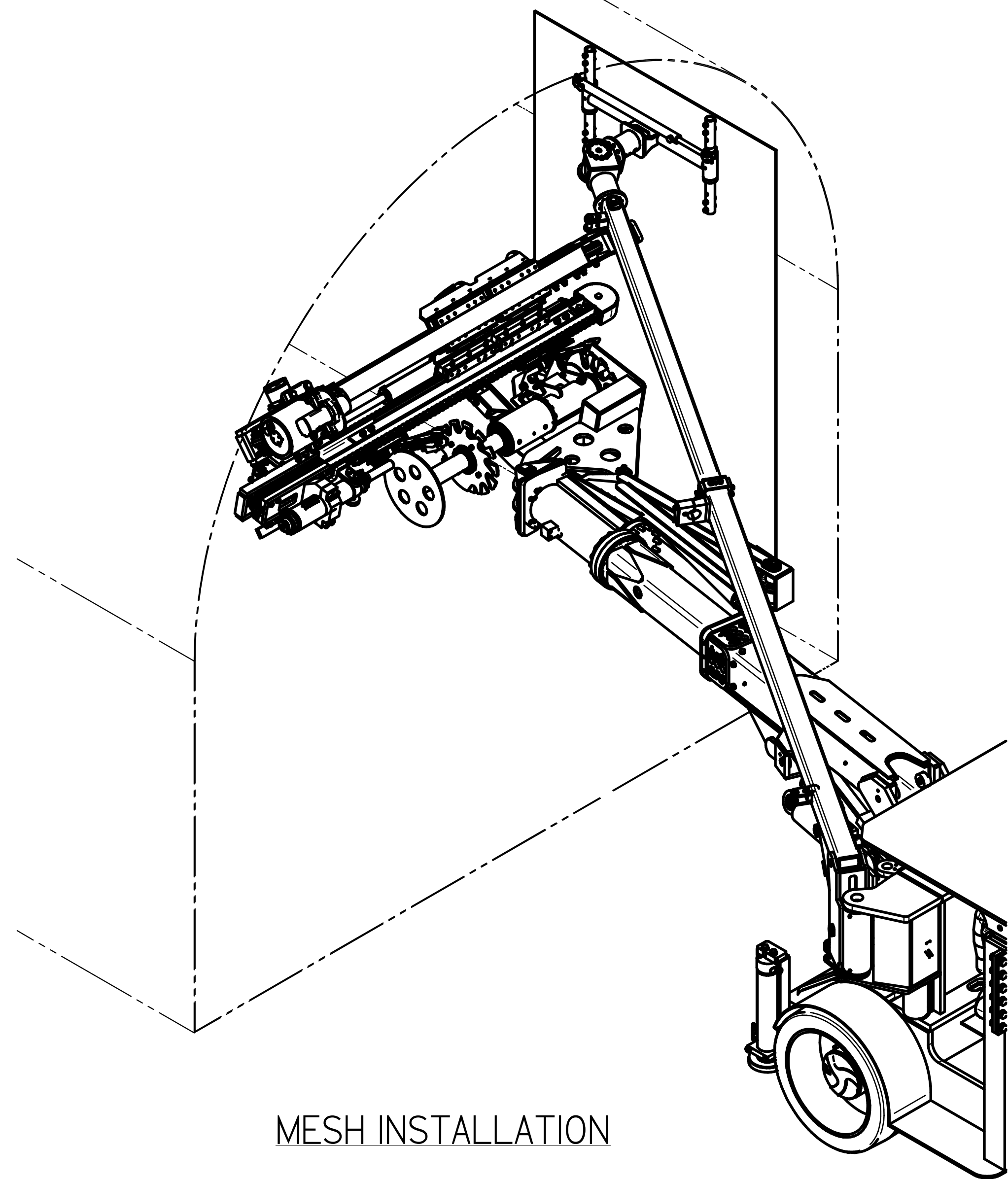
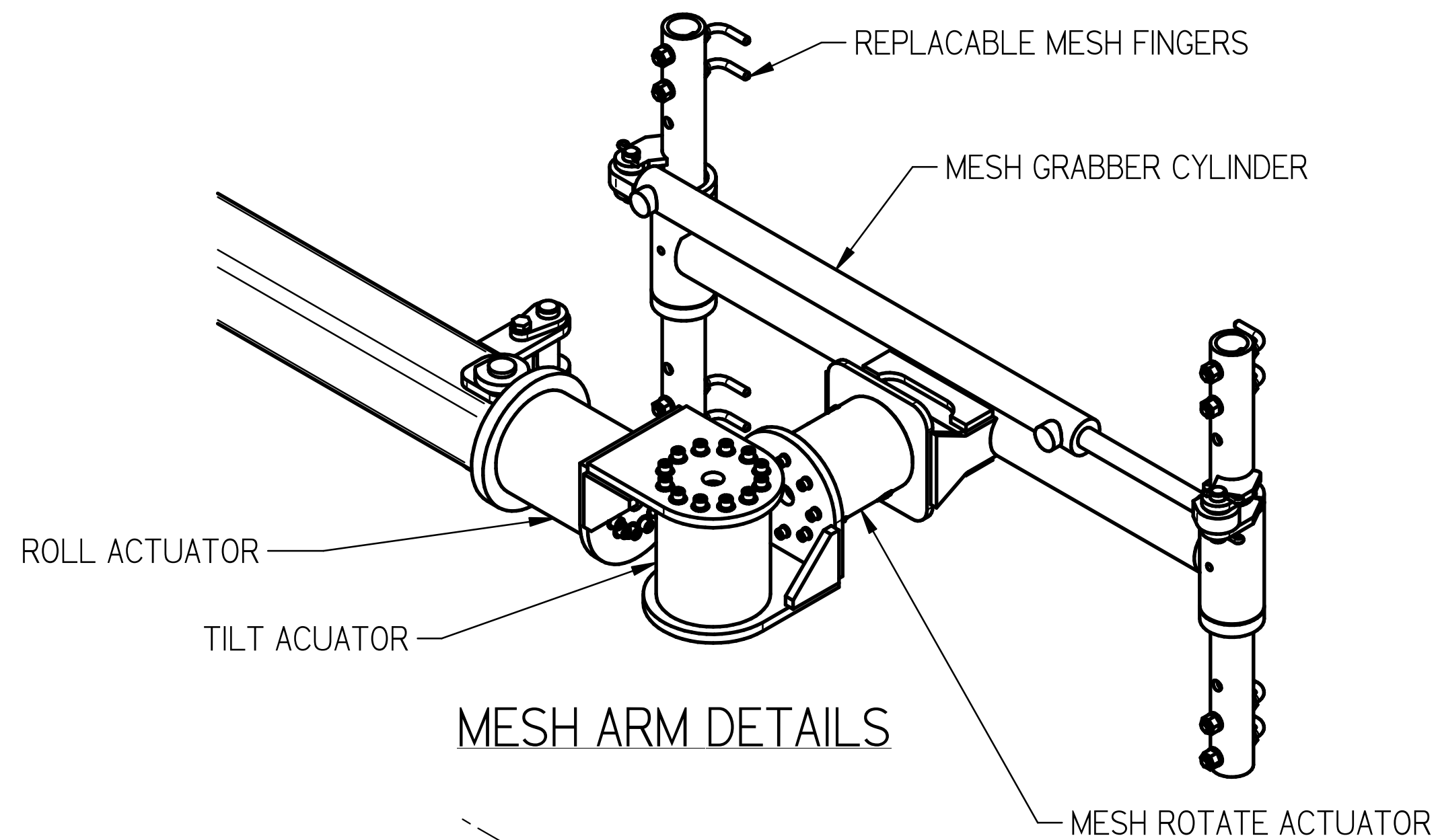
WELDING STANDARDS:  
SEE 359370 DOCUMENT ON JHF WELDING  
STANDARDS AND SPECIFICATIONS. WELD  
SYMBOLS OR NOTES ON DRAWING SUPERCEDE  
359370 DOCUMENT

**J. H. FLETCHER & CO. ©**

THIS DRAWING IN DESIGN AND DETAIL IS OUR PROPERTY AND MUST NOT BE USED EXCEPT IN CONNECTION WITH OUR WORK. ALL RIGHTS OF DESIGN OR INVENTION ARE RESERVED.

**NARROW REMOTE ROOF BOLTER  
N3016-AD/E**

BY JEF	SHEET 2 OF 4	DWG 572224-00	REV A
-----------	-----------------	------------------	----------



MACHINE IN 14 & 10 FT HEADINGS  
MACHINE EQUIPPED WITH 120 DEG. MACHINE ROLL IN EACH DIRECTION. 90 DEG. ROLL SHOWN

DIMENSIONS AND TOLERANCES IN INCHES UNLESS OTHERWISE SPECIFIED:

BREAK CORNERS 0.005" - 0.015"

DECIMALS  
0.X +/- .03  
0.XX +/- 0.01  
0.XXX +/- 0.005

PROJECTION ANGLE

FRACTIONS +/- 1/16"  
ANGLES +/- 1 DEGREE

UNLESS OTHERWISE SPECIFIED ALL STEEL SPECIFICATIONS ARE:  
HRS PLATE --- A36  
HRS BAR --- A36 OR 1020  
ALLOY BAR --- 4140/4142 HEAT TREATED

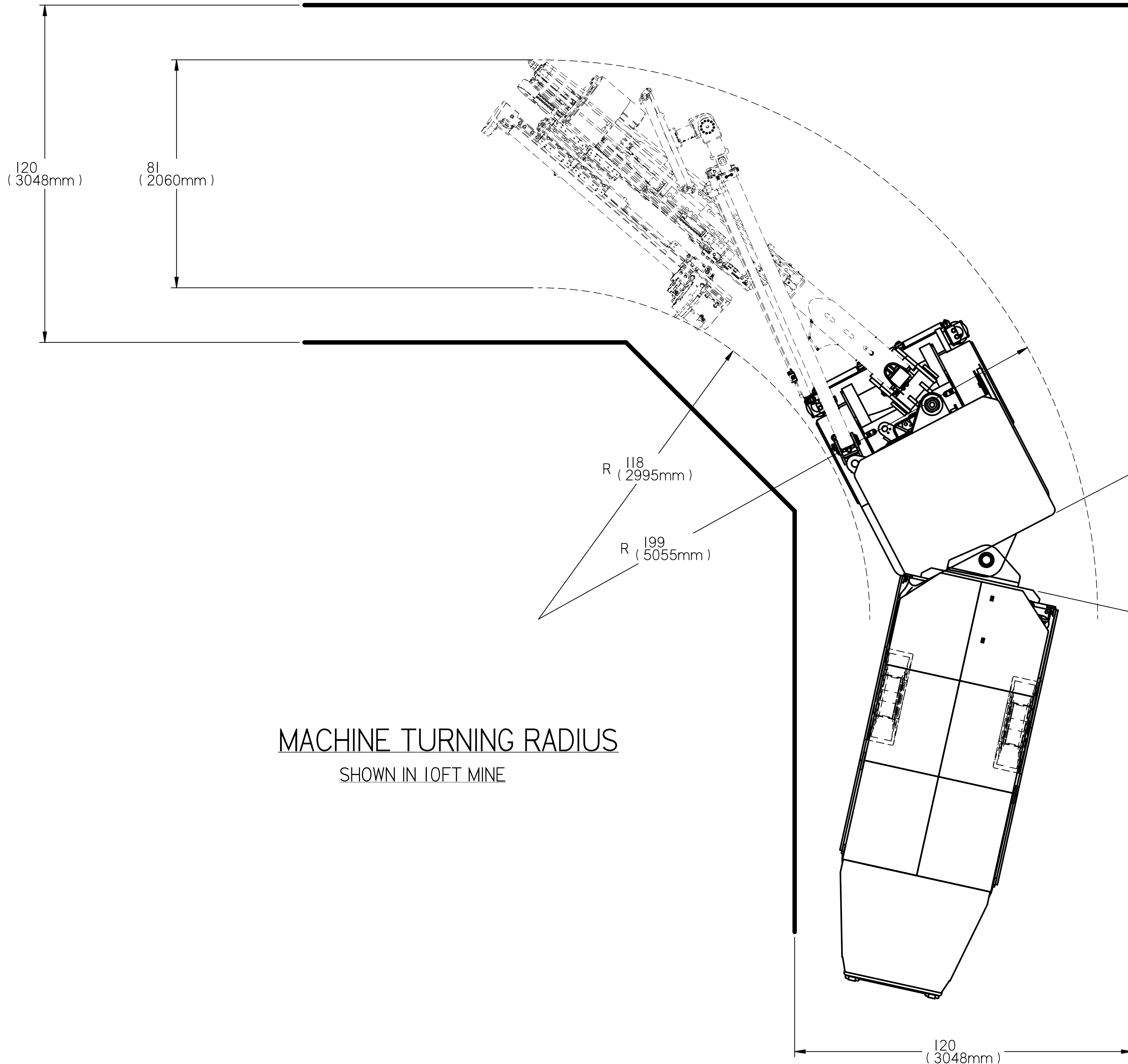
WELDING STANDARDS:  
SEE 359370 DOCUMENT ON JHF WELDING STANDARDS AND SPECIFICATIONS. WELD SYMBOLS OR NOTES ON DRAWING SUPERCEDE 359370 DOCUMENT

**J. H. FLETCHER & CO. ©**

THIS DRAWING IN DESIGN AND DETAIL IS OUR PROPERTY AND MUST NOT BE USED EXCEPT IN CONNECTION WITH OUR WORK. ALL RIGHTS OF DESIGN OR INVENTION ARE RESERVED.

**NARROW REMOTE ROOF BOLTER  
N3016-AD/E**

BY JEF	SHEET 3 OF 4	DWG 572224-00	REV A
-----------	-----------------	------------------	----------



MACHINE TURNING RADIUS  
SHOWN IN 10FT MINE

DIMENSIONS AND TOLERANCES IN INCHES  
UNLESS OTHERWISE SPECIFIED :

BREAK CORNERS  
0.005" - 0.015"

DECIMALS  
0.X +/- .03  
0.XX +/- 0.01  
0.XXX +/- 0.005

FRACTIONS +/- 1/16"  
ANGLES +/- 1 DEGREE

UNLESS OTHERWISE SPECIFIED ALL STEEL  
SPECIFICATIONS ARE:  
HRS PLATE --- A36  
HRS BAR --- A36 OR 1020  
ALLOY BAR --- 4140/4142 HEAT TREATED

WELDING STANDARDS:  
SEE 359370 DOCUMENT ON JHF WELDING  
STANDARDS AND SPECIFICATIONS. WELD  
SYMBOLS OR NOTES ON DRAWING SUPERCEDE  
359370 DOCUMENT

**J. H. FLETCHER & CO. ©**

THIS DRAWING IN DESIGN AND DETAIL IS OUR PROPERTY AND MUST NOT BE USED EXCEPT  
IN CONNECTION WITH OUR WORK. ALL RIGHTS OF DESIGN OR INVENTION ARE RESERVED.

**NARROW REMOTE ROOF BOLTER  
N3016-AD/E**

BY JEF	SHEET 4 OF 4	DWG <b>572224-00</b>	REV <b>A</b>
-----------	-----------------	-------------------------	-----------------