

# NATIONAL

BEARINGS+POWER TRANSMISSION PRODUCTS



[ntl-bpt.com](http://ntl-bpt.com)

**Bushings & Hubs  
Sheaves - Belts**

1-877-469-2529

## PART NUMBER IDENTIFICATION

### BUSHINGS

#### QD, SPLIT TAPER, TAPER-LOCK

**SDS**

Bushing Style

**1 1/2**

Bore Diameter

#### XTB

**XTB**

Bushing Style

**25**

Size

**1 3/4**

Bore Diameter

#### QD WELD-ON HUBS, XT HUBS

**HCQ1**

HUB Size

### SHEAVES

#### AK, 2AK, BK, 2BK, 1VP, 2VP, 1VL, 1VM

**2AK**

Sheave Style

**54**

Size

**7/8**

Bore Diameter

#### AKH, 2AKH, BKH, 2BKH, QD, Split Taper

**3TB**

Sheave Style

**70**

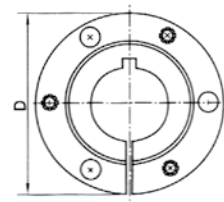
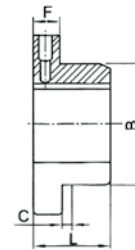
Size

# BUSHINGS AND HUBS



## BUSHINGS AND HUBS

### QD BUSHINGS



### Specifications

Part No.	Bore Range	D	L	B	C	F	Cap Screws		Set Screw Dimensions	Approx. Wt. (lbs)
							No.	Size		
L*	3/8 - 1-1/2	2-1/2	1-11/32	1.6250	3/16	11/32	2	1/4 x 7/8	10-24 UNC x 1/4	0.7
JA*	1/2 - 1-1/4	2	29/32	1.3750	3/16	5/16	3	10-24 x 1	10-24 UNC x 1/4	0.8
SH	1/2 - 1-5/8	2-11/16	1-7/32	1.8710	7/32	7/16	3	1/4 x 1-3/8	10-24 UNC x 1/4	1.0
SDS	1/2 - 2	3-1/8	1-5/16	2.1875	7/32	7/16	3	1/4 x 1-3/8	10-24 UNC x 1/4	1.2
SD	1/2 - 2	3-1/8	1-13/16	2.1875	7/32	7/16	3	1/4 x 1-7/8	10-24 UNC x 1/4	1.5
SK	1/2 - 2-5/8	3-7/8	1-3/4	2.8125	7/32	9/16	3	5/16 x 2	10-24 UNC x 1/4	2.0
SF	1/2 - 2-15/16	4-5/8	2-1/16	3.1250	7/32	9/16	3	3/8 x 2	5/16-18 UNC x 3/8	3.5
E	7/8 - 3-1/2	6	2-21/32	3.8340	9/32	3/4	3	1/2 x 2-3/4	3/8-16 UNC x 3/8	9.0
F	1 - 4	6-5/8	3-3/4	4.4375	11/32	1	3	9/16 x 3-5/8	3/8-16 UNC x 3/8	14.0
J*	1-1/2 - 4-1/2	7-1/4	4-5/8	5.1484	5/16	1-1/8	3	5/8 x 4-1/2	3/8-16 UNC x 3/8	22.0
M	2 - 5-1/2	9	6-3/4	6.4940	11/32	1-1/4	4	3/4 x 6-3/4	3/8-16 UNC x 1/2	51.0
N	2-7/16 - 5-7/8	10	8-1/8	6.9920	9/16	1-1/2	4	7/8 x 8	1/2-13 UNC x 5/8	66.0
P	2-15/16 - 7	11-3/4	9-3/4	8.2420	5/8	1-3/4	4	1 x 9-1/2	5/8-11 UNC x 1-1/4	122.0
W	4-1/4 - 8-1/2	15	11-3/8	10.4380	5/8	2	4	1-1/8 x 11-1/2	None	66.0
S	5-1/2 - 10	17-3/4	15-3/4	12.1250	1-3/16	3-1/4	5	1-1/4 x 15-1/2	None	122.0

The tapers for all Q-style bushings are 3/4" per foot with diameter B.

Material: Ductile iron

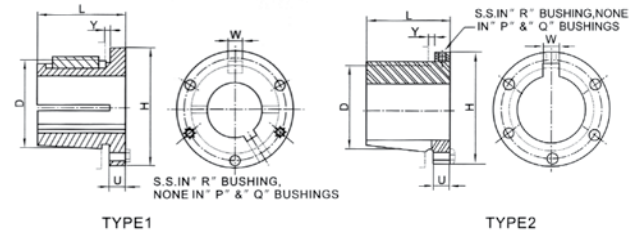
\* Material: Steel

# BUSHINGS AND HUBS

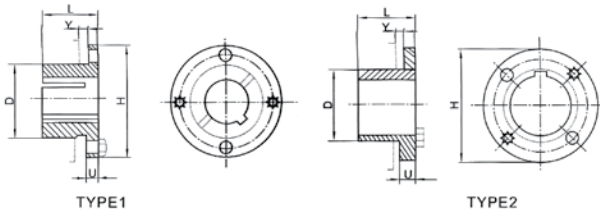
## SPLIT TAPER BUSHINGS



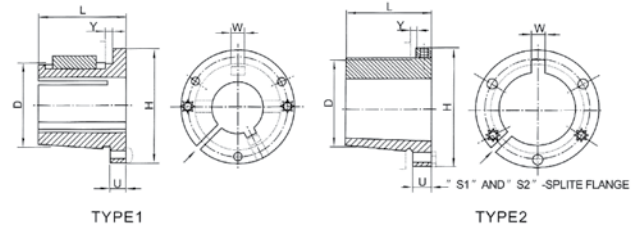
P, Q & R Bushings



G & H Bushings



S & U Bushings



## Specifications

Part No.	L	U	D		H	W	Bore Range		Cap Screws		Approx. Wt. (lbs)
			Large End	Small End			Type 1	Type 2	No.	Size	
G*	1	1/4	1.1720	1.133	2	-	3/8 - 15/16	1	2	1/4 x 5/8	0.5
H*	1-1/4	1/4	1.6250	1.570	2-1/2	-	3/8 - 1-3/8	1-7/16 - 1-1/2	2	1/4 x 3/4	0.8
P1	1-15/16	13/32	1.9375	1.855	3	3/8	1/2 - 1-7/16	1-1/2 - 1-3/4	3	5/16 x 1	1.3
P2	2-15/16	13/32	1.9375	1.793	3	3/8	3/4 - 1-7/16	1-1/2 - 1-3/4	3	5/16 x 1	1.5
Q1	2-1/2	17/32	2.8750	2.765	4-1/8	1/2	3/4 - 2-1/16	2-1/8 - 2-11/16	3	3/8 x 1-1/4	3.5
Q2	3-1/2	17/32	2.8750	2.703	4-1/8	1/2	1 - 2-1/16	2-1/8 - 2-5/8	3	3/8 x 1-1/4	4.5
R1	2-7/8	5/8	4.0000	3.875	5-3/8	3/4	1-1/8 - 2-13/16	2-1/8 - 3-3/4	3	3/8 x 1-3/4	7.5
R2	4-7/8	5/8	4.0000	3.750	5-3/8	3/4	1-3/8 - 2-13/16	2-7/8 - 3-3/8	3	3/8 x 1-3/4	11.0
S1	4-3/8	3/4	4.6250	4.418	6-3/8	3/4	1-11/16 - 3-3/16	3-1/4 - 4-1/4	3	1/2 x 2-1/4	13.5
S2	6-3/4	3/4	4.6250	4.269	6-3/8	3/4	1-7/8 - 3-3/16	3-1/4 - 4-3/16	3	1/2 x 2-1/4	19.0
U0	5-1/4	1-1/16	6.0000	5.765	8-3/8	1-1/4	2-3/8 - 3-1/16	4-3/8 - 5-1/2	3	5/8 x 2-3/4	30.0
U1	7-1/8	1-1/16	6.0000	5.765	8-3/8	1-1/4	2-3/4 - 4-1/4	4-3/8 - 5-1/2	3	5/8 x 2-3/4	40.0

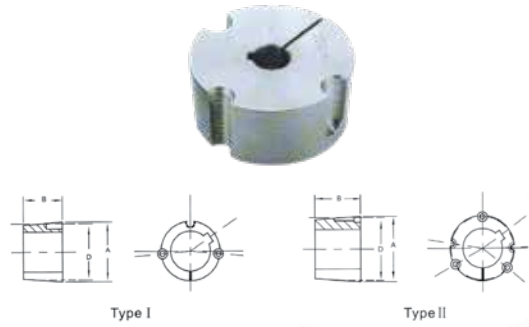
The tapers for all Split Taper bushings are 3/4" per foot with diameter D.

Material: Ductile iron  
\* Material: Steel

All pictures may differ from the final products. Product availability and specifications are subject to change without notice.

## BUSHINGS AND HUBS

### TAPER-LOCK BUSHINGS



### Specifications

Part No.	A	B	D1	Approx. Wt. (lbs)	Type
1008	1.386	0.875	1.328	0.20	1
1108	1.511	0.875	1.453	0.25	1
1210	1.875	1.000	1.750	0.55	1
1215	1.875	1.500	1.750	0.70	1
1610	2.250	1.000	2.125	0.70	1
1615	2.250	1.500	2.125	1.00	1
2012	2.750	1.250	2.625	1.40	1
2517	3.375	1.750	3.250	3.20	1
2525	3.375	2.500	3.250	4.30	1
3020	4.250	2.000	4.000	5.80	1
3030	4.250	3.000	4.000	8.00	1
3535	5.000	3.500	4.830	11.00	2
4040	5.750	4.000	5.540	17.00	2
4545	6.375	4.500	6.130	24.00	2
5050	7.000	5.000	6.720	32.00	2

The tapers for all Taper-Lock bushings are 3/4" per foot with diameter D. Material: Ductile iron

### Standard Keyseats

Bore range	Keyseat	Bore range	Keyseat
1/2 - 9/16	1/8 x 1/16	2 5/16 - 2 3/4	5/8 x 5/16
5/8 - 7/8	3/16 x 3/32	2 13/16 - 3 1/4	3/4 x 3/8
15/16 - 1 1/4	1/4 x 1/8	3 3/8 - 3 3/4	7/8 x 7/16
1 5/16 - 1 3/8	5/16 x 5/32	3 7/8 - 4 1/2	1 x 1/2
1 7/16 - 1 3/4	3/8 x 3/16	4 5/8 - 5	1 1/4 x 5/8
1 13/16 - 2 1/4	1/2 x 1/4		

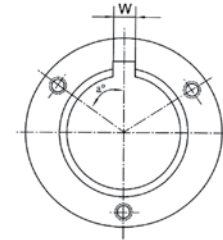
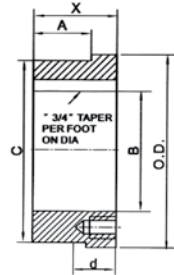
### Standard Stock Bores

	1008	1108	1210	1215	1610	1615	2012	2517	2525	3020	3030	3535	4040	4545	5050
1/2	X	X	X	X	X	X	X	X							
9/16	X	X	X	X	X	X	X	X							
5/8	X	X	X	X	X	X	X	X							
11/16	X	X	X	X	X	X	X	X							
3/4	X	X	X	X	X	X	X	X	X						
13/16	X	X	X	X	X	X	X	X	X						
7/8	X	X	X	X	X	X	X	X	X						
15/16	X	X	X	X	X	X	X	X	X	X					
1	X	X	X	X	X	X	X	X	X	X	X				
1 1/16		X	X	X	X	X	X	X	X	X	X				
1 1/8		X	X	X	X	X	X	X	X	X	X				
1 3/16			X	X	X	X	X	X	X	X	X	X			
1 1/4			X	X	X	X	X	X	X	X	X	X			
1 5/16					X	X	X	X	X	X	X	X			
1 3/8					X	X	X	X	X	X	X	X			
1 7/16					X	X	X	X	X	X	X	X	X		
1 1/2					X	X	X	X	X	X	X	X	X		
1 9/16					X	X	X	X	X	X	X	X			
1 5/8					X	X	X	X	X	X	X	X	X		
1 11/16							X	X	X	X	X	X	X		
1 3/4							X	X	X	X	X	X	X		
1 13/16							X	X	X	X	X	X	X		
1 7/8							X	X	X	X	X	X	X		
1 15/16							X	X	X	X	X	X	X	X	
2							X	X	X	X	X	X	X	X	X
2 1/16							X	X	X	X	X	X	X		
2 1/8							X	X	X	X	X	X	X		
2 3/16							X	X	X	X	X	X	X	X	
2 1/4							X	X	X	X	X	X	X		
2 5/16							X	X	X	X	X	X	X		
2 3/8							X	X	X	X	X	X	X	X	
2 7/16							X	X	X	X	X	X	X	X	X
2 1/2							X	X	X	X	X	X	X		X
2 9/16									X	X	X	X			
2 5/8										X	X	X	X	X	
2 11/16										X	X	X	X		
2 3/4										X	X	X	X	X	
2 13/16										X	X	X	X		
2 7/8										X	X	X	X	X	
2 15/16										X	X	X	X	X	X
3										X	X	X	X	X	
3 1/16												X	X	X	
3 1/8												X	X	X	
3 3/16												X	X	X	
3 1/4												X	X	X	
3 5/16												X	X		
3 3/8												X	X	X	X
3 7/16												X	X	X	X
3 1/2												X	X	X	
3 9/16												X			
3 5/8												X	X	X	X
3 11/16												X	X		
3 3/4												X	X		
3 13/16												X			
3 7/8												X	X	X	X
3 15/16												X	X	X	
4												X	X	X	
4 1/8													X		
4 3/16													X		
4 1/4													X	X	
4 3/8													X	X	
4 7/16													X	X	
4 1/2													X	X	
4 7/8														X	
4 15/16															X
5															X

All pictures may differ from the final products. Product availability and specifications are subject to change without notice.

# BUSHINGS AND HUBS

## QD WELD-ON HUBS



### Specifications

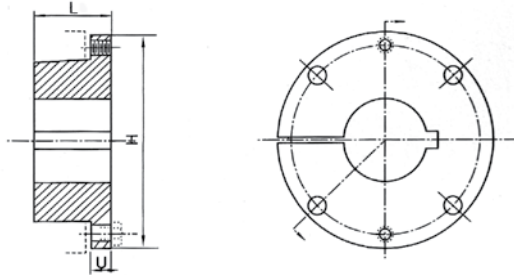
Part No.	Bushing No.	O.D.	A	B	C	W	X	No.	Size	Wt. (lbs)
HH1	H	2-1/2	0.174	1.6210	2.375	-	7/8	2	1/4-20	0.6
HP1	P1	3	0.292	1.9375	2.875	3/8	1-5/16	3	5/16-18	1.4
HCP1	P1	3	1.000	1.9375	2.875	3/8	1-5/16	3	5/16-18	1.1
HP2	P2	3	1.100	1.9375	2.875	3/8	2-5/16	3	5/16-18	2.5
HQ1	Q1	4-1/2	0.709	2.8750	4.375	1/2	1-3/4	3	3/8-16	4.4
HCQ1	Q1	4-1/2	1.250	2.8750	4.375	1/2	1-3/4	3	3/8-16	4.4
HQ2	Q2	4-1/2	1.606	2.8750	4.375	1/2	2-3/4	3	3/8-16	6.9
HR1	R1	5-3/4	0.709	4.0000	5.625	3/4	2	3	3/8-16	7.3
HR2	R2	5-3/4	1.606	4.0000	5.625	3/4	4	3	3/8-16	15.4
HS1	S1	6-3/4	0.946	4.6250	6.500	3/4	3-5/16	3	1/2-13	17.3
HS2	S2	6-3/4	2.963	4.6250	6.500	3/4	5-11/16	3	1/2-13	30.4
HU0	U0	8-1/2	2.000	6.0000	8.250	1-1/4	3-3/4	3	5/8-11	32.0
HU1	U1	8-1/2	2.963	6.0000	8.250	1-1/4	5-5/8	3	5/8-11	44.6

The tapers for all QD Weld-On hubs are 3/4" per foot with diameter B.

Material: Steel

## BUSHINGS AND HUBS

### XT BUSHINGS



### Specifications

Part No.	L	U	H	No.	Size	Wt. (lbs)
XTB15	1-1/8	3/8	2-7/8	4	1/4-20NC x 1	0.7
XTB20	1-13/32	15/32	3-3/4	4	5/16-18NC x 1-1/4	1.5
XTB25	1-7/8	5/8	4-7/16	4	3/8-16NC x 1-3/4	2.6
XTB30	2-1/16	11/16	5-5/16	4	7/16-14NC x 1-1/2	4.2
XTB35	2-15/32	25/32	6-5/16	4	1/2-13NC x 1-3/4	7.4
XTB40	2-13/16	7/8	7-1/8	4	9/16-12NC x 2	10.5
XTB45	3-5/16	15/16	8	4	5/8-11NC x 2-1/4	14.8
XTB50	3-3/4	1	10-1/8	4	3/4-10NC x 2-1/2	27.8
XTB60	4-1/8	1-1/8	11-15/16	4	7/8-9NC x 2-1/2	42.8
XTB70	4-11/16	1-5/16	13-15/16	4	1-8NC x 3	66.3
XTB80	5-1/8	1-3/8	15-5/8	4	1-1/8-7NC x 3-1/2	85.7
XTB100	6-3/16	1-9/16	17-15/16	6	1-1/8-7NC x 3-1/2	146.0
XTB120	7-1/16	1-3/4	20-5/8	8	1-1/8-7NC x 3-1/2	216.0

Taper 2" per foot.

Material: Ductile iron

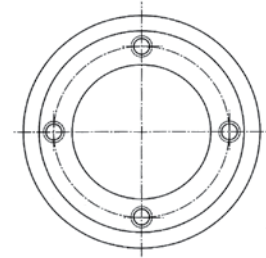
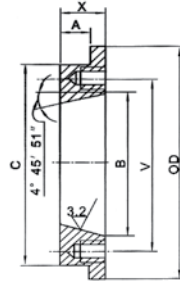
### Standard Stock Bores

Part No.	Stock Bores	Keyseat
XTB15	5/8, 3/4, 7/8	3/16 x 3/32
	1, 1-1/8, 1-3/16, 1-1/4	1/4 x 1/8
	1-7/16, 1-1/2	3/8 x 1/8
XTB20	3/4	3/16 x 3/32
	1, 1-3/16, 1-1/4	1/4 x 1/8
	1-7/16, 1-1/2, 1-11/16	3/8 x 3/16
	1-15/16, 2	1/2 x 3/16
XTB25	1, 1-3/16, 1-1/4	1/4 x 1/8
	1-7/16, 1-1/2, 1-11/16, 1-3/4	3/8 x 3/16
	1-15/16, 2-3/16	1/2 x 1/4
XTB30	2-7/16	5/8 x 1/8
	1-7/16, 1-1/2, 1-11/16	3/8 x 3/16
	1-15/16, 2-3/16	1/2 x 1/4
	2-7/16, 2-11/16	5/8 x 5/16
XTB35	2-15/16	3/4 x 3/16
	1-15/16, 2-3/16	1/2 x 1/4
	2-7/16, 2-11/16	5/8 x 5/16
XTB40	2-15/16	3/4 x 3/8
	3-7/16	7/8 x 5/16
	2-7/16	5/8 x 5/16
XTB45	2-15/16	3/4 x 3/8
	3-7/16	7/8 x 7/16
	3-15/16	1 x 3/8
XTB50	3-7/16	7/8 x 7/16
	3-15/16	1 x 1/2
	4-7/16	1 x 3/8
XTB50	3-15/16, 4-7/16	1 x 1/2
	4-15/16	1-1/4 x 5/8
XTB60	5-7/16, 5-1/2	1-1/4 x 5/8
	5-15/16, 6	1-1/2 x 3/4
XTB70	6-7/16, 6-1/2	1-1/2 x 3/4
	6-15/16, 7	1-3/4 x 3/4
XTB80	7-1/2	1-3/4 x 3/4
	7-15/16, 8	2 x 3/4
XTB100	8-1/2, 9	2 x 3/4
	9-7/16, 9-1/2, 10	2-1/2 x 7/8
XTB120	10-1/2, 11	2-1/2 x 7/8
	11-1/2, 12	3 x 1



# BUSHINGS AND HUBS

## XT HUBS



### Specifications

Hub No.	Fits Bushing	O.D.	A	B	C	X	Thread	
							No.	Size
XTH15	XTB15	3.1900	7/16	2.000	2.875	5/8	4	1/4-20NC
XTH20	XTB20	4.0650	9/16	2.688	3.813	13/16	4	5/16-18NC
XTH25	XTB25	4.6900	13/16	3.188	4.375	1-1/8	4	3/8-16NC
XTH30	XTB30	5.9400	7/8	3.875	5.750	1-1/4	4	7/16-14NC
XTH35	XTB35	6.5650	1-1/16	4.688	6.345	1-1/2	4	1/2-13NC
XTH40	XTB40	7.5625	1-1/4	5.313	7.250	1-3/4	4	9/16-12NC
XTH45	XTB45	8.3150	1-1/2	5.938	8.000	2-1/8	4	5/8-11NC
XTH50	XTB50	9.9400	1-3/4	7.250	9.563	2-1/2	4	3/4-16NC
XTH60	XTB60	11.6900	1-15/16	8.625	11.250	2-3/4	4	7/8-9NC
XTH70	XTB70	13.6275	2-3/16	10.000	13.188	3-1/8	4	1-8NC
XTH80	XTB80	14.9400	2-7/16	11.125	14.625	3-7/16	4	1-1/8-7NC
XTH100	XTB100	17.9400	3	13.688	17.500	4-1/8	6	1-1/8-7NC
XTH120	XTB120	20.9400	3-1/2	16.188	20.500	4-13/16	8	1-1/8-7NC

Taper 2" per foot.

Material: Steel

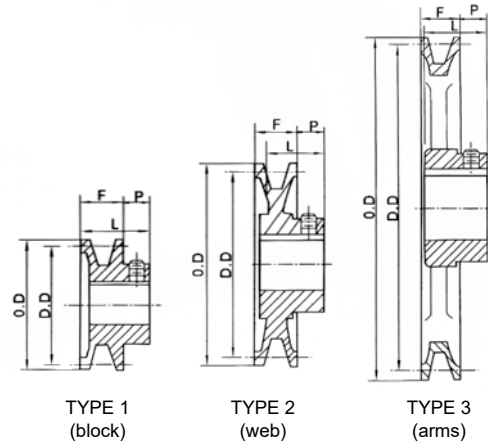


# SHEAVES



## SHEAVES

### AK SHEAVES



For (4L) or (A) Belts and (3L) Belts

Part No.	Diameters			Type	Dimensions			Wt. (lbs)	
	Outside	Datum (A) Belts	Pitch (3L) Belts		Standard Bore		F		L
AK17	1.75	1.50	1.16	1	1/2, 5/8		21/32	15/16	0.2
AK20	2.00	1.80	1.46	1	1/2, 5/8, 3/4		21/32	15/16	0.3
AK21	2.10	1.90	1.56	1	1/2, 5/8, 3/4		21/32	15/16	0.4
AK22	2.20	2.00	1.66	1	1/2, 5/8, 3/4		21/32	15/16	0.5
AK23	2.30	2.10	1.76	1	1/2, 5/8, 3/4		21/32	15/16	0.5
AK25	2.50	2.30	1.96	2	1/2, 5/8, 3/4		21/32	15/16	0.5
AK26	2.60	2.40	2.06	2	1/2, 5/8, 3/4		21/32	15/16	0.5
AK27	2.70	2.50	2.16	2	1/2, 5/8, 3/4		21/32	15/16	0.6
AK28	2.80	2.60	2.26	2	1/2, 5/8, 3/4		21/32	15/16	0.7
AK30	3.05	2.80	2.46	2	1/2, 5/8, 3/4, 7/8		21/32	15/16	0.7
AK32	3.25	3.00	2.66	2	1/2, 5/8, 3/4, 7/8		21/32	15/16	0.7
AK34	3.45	3.20	2.86	2	1/2, 5/8, 3/4, 7/8		21/32	15/16	0.9
AK39	3.75	3.50	3.16	2	1/2, 5/8, 3/4, 7/8, 15/16, 1		3/4	1-5/32	1.4
AK41	3.95	3.70	3.36	2	1/2, 5/8, 3/4, 7/8, 15/16, 1		3/4	1-5/32	1.5
AK44	4.25	4.00	3.66	3	1/2, 5/8, 3/4, 7/8, 15/16, 1, 1-1/8		3/4	1-5/32	1.5
AK46	4.45	4.20	3.86	3	1/2, 5/8, 3/4, 7/8, 15/16, 1, 1-1/8		3/4	1-5/32	1.5
AK49	4.75	4.50	4.16	3	1/2, 5/8, 3/4, 7/8, 15/16, 1, 1-1/8		3/4	1-5/32	1.7
AK51	4.95	4.70	4.36	3	1/2, 5/8, 3/4, 7/8, 1, 1-1/8		3/4	1-5/32	1.7
AK54	5.25	5.00	4.66	3	1/2, 5/8, 3/4, 7/8, 15/16, 1, 1-1/8, 1-3/16		3/4	1-5/32	1.8
AK56	5.45	5.20	4.86	3	1/2, 5/8, 3/4, 7/8, 15/16, 1, 1-1/8, 1-3/16		3/4	1-5/32	1.9
AK59	5.75	5.50	5.16	3	1/2, 5/8, 3/4, 7/8, 15/16, 1, 1-1/8, 1-3/16		3/4	1-5/32	2.0
AK61	5.95	5.70	5.36	3	1/2, 5/8, 3/4, 7/8, 15/16, 1, 1-1/8, 1-3/16		3/4	1-5/32	2.1
AK64	6.25	6.00	5.66	3	1/2, 5/8, 3/4, 7/8, 15/16, 1, 1-1/8, 1-3/16		3/4	1-5/32	2.2
AK66	6.45	6.20	5.86	3	5/8, 3/4, 1, 1-1/8		3/4	1-5/32	2.3
AK69	6.75	6.50	6.16	3	3/4, 1, 1-1/8		3/4	1-15/32	3.5
AK71	6.95	6.70	6.36	3	5/8, 3/4, 1, 1-1/8, 1-7/16		3/4	1-15/32	3.8
AK74	7.25	7.00	6.66	3	1/2, 5/8, 3/4, 15/16, 1, 1-1/8, 1-3/16, 1-1/4, 1-7/16		3/4	1-15/32	3.4
AK79	7.75	7.50	7.16	3	3/4, 1, 1-1/8, 1-7/16		3/4	1-15/32	4.0
AK84	8.25	8.00	7.66	3	1/2, 5/8, 3/4, 15/16, 1, 1-3/16, 1-7/16		3/4	1-15/32	3.8
AK89	8.75	8.50	8.16	3	3/4, 1, 1-1/8, 1-7/16		3/4	1-15/32	4.3
AK94	9.25	9.00	8.66	3	1/2, 5/8, 3/4, 15/16, 1, 1-3/16, 1-1/4, 1-7/16		3/4	1-15/32	4.5
AK99	9.75	9.50	9.16	3	3/4, 1, 1-7/16		3/4	1-15/32	5.3
AK104	10.25	10.00	9.66	3	5/8, 3/4, 1, 1-3/16, 1-1/4, 1-3/8, 1-7/16		3/4	1-15/32	5.1
AK109	10.75	10.50	10.16	3	3/4, 1, 1-3/8, 1-7/16		3/4	1-15/32	5.8
AK114	11.25	11.00	10.66	3	3/4, 1, 1-3/16, 1-7/16		3/4	1-15/32	5.6
AK124	12.25	12.00	11.66	3	5/8, 3/4, 1, 1-3/16, 1-1/4, 1-7/16		3/4	1-15/32	6.5
AK134	13.25	13.00	12.66	3	3/4, 1-3/16, 1-3/8, 1-7/16		3/4	1-15/32	7.5
AK144	14.25	14.00	13.66	3	3/4, 1, 1-3/16, 1-7/16		3/4	1-15/32	8.5
AK154	15.25	15.00	14.66	3	3/4, 1, 1-3/16, 1-3/8, 1-7/16		3/4	1-15/32	9.8
AK184	18.25	18.00	17.66	3	3/4, 1, 1-3/16, 1-7/16		3/4	1-15/32	12.1

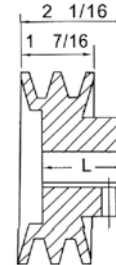
All pictures may differ from the final products. Product availability and specifications are subject to change without notice.

# SHEAVES

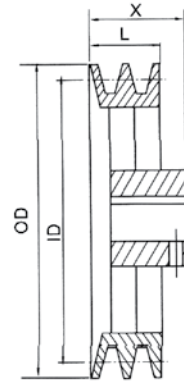
## 2AK SHEAVES



TYPE 1  
(block)



TYPE 2  
(web)



TYPE 3  
(arms)

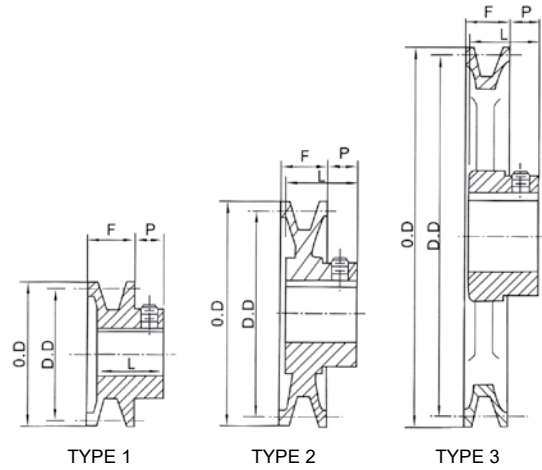
For (4L) or (A) Belts and (3L) Belts

Part No.	Diameters			Type	Dimensions			Max. Bore	Wt. (lbs)	
	Outside	Datum (A) Belts	Pitch (3L) Belts		Standard Bore		L			X
2AK20	2.00	1.75	1.46	1	1/2, 5/8, 3/4		2-1/16	-	3/4	1.0
2AK21	2.15	1.90	1.56	1	1/2, 5/8, 3/4, 7/8		2-1/16	-	7/8	1.0
2AK22	2.25	2.00	1.66	1	1/2, 5/8, 3/4, 7/8, 1		2-1/16	-	1	1.0
2AK23	2.35	2.10	1.76	1	1/2, 5/8, 3/4, 7/8		1-7/8	-	1-1/8	1.0
2AK25	2.55	2.30	1.98	1	1/2, 5/8, 3/4, 7/8, 1, 1-1/8		1-11/16	-	1-1/8	1.5
2AK26	2.65	2.40	2.06	1	1/2, 5/8, 3/4, 7/8, 1, 1-1/8		1-7/8	-	1-1/8	1.5
2AK27	2.75	2.50	2.16	1	1/2, 5/8, 3/4, 7/8, 1, 1-1/8		1-11/16	-	1-1/8	1.5
2AK28	2.85	2.60	2.26	1	1/2, 5/8, 3/4, 7/8, 1, 1-1/8		1-11/16	-	1-1/8	1.5
2AK30	3.05	2.80	2.46	1	1/2, 5/8, 3/4, 7/8, 1, 1-1/8		1-11/16	-	1-1/8	2.0
2AK32	3.25	3.00	2.66	1	1/2, 5/8, 3/4, 7/8, 1, 1-1/8		1-5/8	-	1-1/8	2.0
2AK34	3.45	3.20	2.86	1	1/2, 5/8, 3/4, 7/8, 1, 1-1/8		1-5/8	-	1-1/8	2.5
2AK39	3.75	3.50	3.16	2	1/2, 5/8, 3/4, 7/8, 1, 1-1/8		1-5/8	-	1-3/16	3.0
2AK41	3.95	3.70	3.36	2	1/2, 5/8, 3/4, 7/8, 1, 1-1/8		1-9/16	-	1-3/16	3.0
2AK44	4.25	4.00	3.66	2	1/2, 5/8, 3/4, 7/8, 1, 1-1/8		1-9/16	-	1-3/16	3.0
2AK46	4.45	4.20	3.86	2	1/2, 5/8, 3/4, 7/8, 1, 1-1/8		1-11/16	-	1-3/16	4.0
2AK49	4.75	4.50	4.16	2	1/2, 5/8, 3/4, 7/8, 1, 1-1/8, 1-3/8		1-9/16	-	1-3/8	3.5
2AK51	4.95	4.70	4.36	2	1/2, 5/8, 3/4, 7/8, 1, 1-1/8		1-9/16	-	1-3/16	4.0
2AK54	5.25	5.00	4.66	3	5/8, 3/4, 7/8, 1, 1-1/8		1-9/16	1-25/32	1-3/16	4.0
2AK56	5.45	5.20	4.86	3	5/8, 3/4, 7/8, 1, 1-1/8		1-9/16	1-25/32	1-3/16	5.0
2AK59	5.75	5.50	5.16	3	1/2, 5/8, 3/4, 7/8, 1, 1-1/8, 1-3/16		1-9/16	1-25/32	1-5/16	5.0
2AK61	5.95	5.70	5.36	3	1/2, 5/8, 3/4, 7/8, 1, 1-1/8		1-11/16	1-25/32	1-5/16	6.0
2AK64	6.25	6.00	5.66	3	5/8, 3/4, 7/8, 1, 1-1/8, 1-3/16		1-9/16	1-25/32	1-11/16	5.5
2AK74	7.25	7.00	6.66	3	3/4, 7/8, 1, 1-1/8, 1-3/16		1-9/16	1-25/32	1-11/16	6.0
2AK84	8.25	8.00	7.66	3	3/4, 7/8, 1, 1-1/8, 1-3/16		1-9/16	1-25/32	1-7/16	8.0
2AK94	9.25	9.00	8.66	3	3/4, 7/8, 1, 1-1/8, 1-3/16		1-9/16	1-25/32	1-11/16	9.0
2AK104	10.25	10.00	9.66	3	3/4, 7/8, 1, 1-1/8, 1-3/16		1-9/16	1-25/32	1-11/16	10.0
2AK114	11.25	11.00	10.66	3	3/4, 7/8, 1, 1-1/8, 1-3/16		1-9/16	1-25/32	1-11/16	11.0
2AK124	12.25	12.00	11.66	3	3/4, 7/8, 1, 1-1/8, 1-3/16		1-19/32	1-25/32	1-11/16	12.0
2AK134	13.25	13.00	12.66	3	5/8, 7/8, 1, 1-1/8, 1-3/16		1-19/32	1-25/32	1-11/16	14.0
2AK144	14.25	14.00	13.66	3	5/8, 3/4, 7/8, 1, 1-1/8, 1-3/16		1-9/16	1-25/32	1-11/16	15.0
2AK154	15.25	15.00	14.66	3	5/8, 3/4, 7/8, 1, 1-1/8, 1-3/16		1-9/16	1-25/32	1-15/16	17.0
2AK184	18.25	18.00	17.66	3	5/8, 7/8, 1, 1-1/8, 1-3/16		1-17/32	1-25/32	1-15/16	19.0

All pictures may differ from the final products. Product availability and specifications are subject to change without notice.

## SHEAVES

### BK SHEAVES



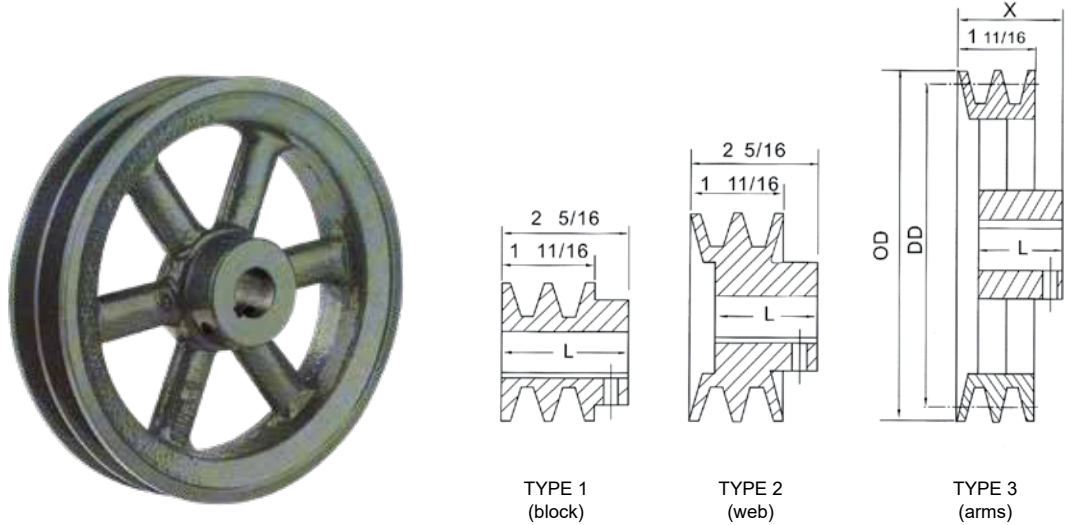
For (4L) or (A) Belts and (5L) or (B) Belts

Part No.	Diameters			Type	Dimensions				Wt. (lbs)	
	Outside	Datum (A) Belts	Datum (B) Belts		Standard Bore		F	L		P
BK24	2.40	1.80	2.20	1	1/2, 5/8		13/16	1-1/16	5/32	0.4
BK25	2.50	1.90	2.30	1	1/2, 5/8, 3/4, 7/8		13/16	1-1/16	5/32	0.5
BK26	2.60	2.00	2.40	1	1/2, 5/8, 3/4, 7/8		13/16	1-1/16	5/32	0.6
BK27	2.70	2.10	2.50	2	1/2, 5/8, 3/4, 7/8		13/16	1-1/16	5/32	0.6
BK28	2.95	2.20	2.60	2	1/2, 5/8, 3/4, 7/8		13/16	1-1/16	5/32	0.8
BK30	3.15	2.40	2.80	2	1/2, 5/8, 3/4, 7/8		13/16	1-1/16	5/32	0.8
BK32	3.35	2.60	3.00	2	1/2, 5/8, 3/4, 7/8		13/16	1-1/16	1/8	0.8
BK34	3.55	2.80	3.20	2	1/2, 5/8, 3/4, 7/8, 1, 1-1/8		7/8	1-5/32	1/8	1.3
BK36	3.75	3.00	3.40	2	1/2, 5/8, 3/4, 7/8, 1, 1-1/8		7/8	1-5/32	1/8	1.5
BK40	3.95	3.20	3.60	2	1/2, 5/8, 3/4, 7/8, 1, 1-1/8		7/8	1-5/32	1/8	1.5
BK45	4.25	3.50	3.90	2	1/2, 5/8, 3/4, 7/8, 1, 1-1/8		7/8	1-5/32	1/8	1.8
BK47	4.45	3.70	4.10	2	1/2, 5/8, 3/4, 7/8, 1, 1-1/8		7/8	1-5/32	1/8	1.9
BK50	4.75	4.00	4.40	3	1/2, 5/8, 3/4, 7/8, 15/16, 1, 1-1/8		7/8	1-5/32	1/8	2.0
BK52	4.95	4.20	4.60	3	1/2, 5/8, 3/4, 7/8, 1, 1-1/8		7/8	1-5/32	1/8	2.0
BK55	5.25	4.50	4.90	3	1/2, 5/8, 3/4, 7/8, 1, 1-1/8, 1-3/16		7/8	1-5/32	1/8	2.2
BK57	5.45	4.70	5.10	3	5/8, 3/4, 7/8, 15/16, 1, 1-1/8		7/8	1-5/32	1/8	2.3
BK60	5.75	5.00	5.40	3	1/2, 5/8, 3/4, 7/8, 1, 1-1/8, 1-3/16		7/8	1-5/32	1/8	2.3
BK62	5.95	5.20	5.60	3	1/2, 5/8, 3/4, 7/8, 15/16, 1, 1-1/8, 1-3/16		7/8	1-5/32	1/8	2.4
BK65	6.25	5.50	5.90	3	5/8, 3/4, 7/8, 1, 1-1/8		7/8	1-5/32	1/8	2.7
BK67	6.45	5.70	6.10	3	5/8, 3/4, 7/8, 1, 1-1/8		7/8	1-5/32	1/8	2.8
BK70	6.75	6.00	6.40	3	3/4, 15/16, 1, 1-1/8, 1-3/16, 1-7/16		7/8	1-15/32	1/16	3.3
BK72	6.95	6.20	6.60	3	3/4, 1, 1-1/8, 1-3/8		7/8	1-15/32	1/16	3.9
BK75	7.25	6.50	6.90	3	3/4, 1, 1-1/8, 1-3/8		7/8	1-15/32	1/16	3.9
BK77	7.45	6.70	7.10	3	3/4, 1, 1-1/8, 1-3/8		7/8	1-15/32	1/16	4.1
BK80	7.75	7.00	7.40	3	5/8, 3/4, 7/8, 1, 1-1/8, 1-3/16, 1-1/4, 1-3/8, 1-7/16		7/8	1-15/32	1/16	4.4
BK85	8.25	7.50	7.90	3	3/4, 1-1/8, 1-3/8, 1-7/16		7/8	1-15/32	1/16	5.0
BK90	8.75	8.00	8.40	3	3/4, 7/8, 15/16, 1, 1-1/8, 1-3/16, 1-3/8, 1-7/16		7/8	1-15/32	1/16	5.0
BK95	9.25	8.50	8.90	3	3/4, 1, 1-1/8, 1-7/16		7/8	1-15/32	1/16	5.4
BK100	9.75	9.00	9.40	3	3/4, 7/8, 15/16, 1, 1-1/8, 1-3/16, 1-1/4, 1-3/8, 1-7/16		7/8	1-15/32	1/16	5.6
BK105	10.25	9.50	9.90	3	3/4, 1, 1-3/8, 1-7/16		7/8	1-15/32	1/16	5.8
BK110	10.75	10.00	10.40	3	1, 1-1/8, 1-3/16, 1-3/8, 1-7/16		7/8	1-15/32	1/16	6.4
BK115	11.25	10.50	10.90	3	1, 1-3/8, 1-7/16		7/8	1-15/32	1/16	6.9
BK120	11.75	11.00	11.40	3	3/4, 1, 1-3/16, 1-3/8, 1-7/16		7/8	1-15/32	1/16	7.4
BK130	12.75	12.00	12.40	3	3/4, 1, 1-1/8, 1-3/16, 1-1/4, 1-7/16		7/8	1-15/32	1/16	8.4
BK140	13.75	13.00	13.40	3	3/4, 1, 1-3/16, 1-7/16		7/8	1-15/32	1/16	9.4
BK160	15.75	15.00	15.40	3	1, 1-1/8, 1-3/16, 1-1/4, 1-7/16		7/8	1-15/32	1/16	11.4
BK190	18.75	18.00	18.40	3	1, 1-3/16, 1-1/4, 1-7/16		7/8	1-15/32	1/16	13.4

All pictures may differ from the final products. Product availability and specifications are subject to change without notice.

# SHEAVES

## 2BK SHEAVES



For (4L) or (A) Belts and (5L) or (B) Belts

Part No.	Diameters			Type	Dimensions			Max. Bore	Wt. (lbs)	
	Outside	Datum (A) Belts	Datum (B) Belts		Standard Bore		L			X
2BK25	2.50	1.90	2.30	1	1/2, 5/8, 3/4, 7/8, 1, 1-1/8		2-5/16	-	1-1/8	1.5
2BK27	2.70	2.10	2.50	2	1/2, 5/8, 3/4, 7/8, 1, 1-1/8		1-15/16	-	1-1/8	1.5
2BK28	2.95	2.20	2.60	2	1/2, 5/8, 3/4, 7/8, 1, 1-1/8		1-15/16	-	1-1/8	2.0
2BK30	3.15	2.40	2.80	2	1/2, 5/8, 3/4, 7/8, 1, 1-1/8		1-7/8	-	1-1/8	2.0
2BK32	3.35	2.60	3.00	2	1/2, 5/8, 7/8, 1, 1-1/8		1-15/16	-	1-1/8	3.0
2BK34	3.55	2.80	3.20	2	1/2, 5/8, 3/4, 7/8, 1, 1-1/8		1-7/8	-	1-1/8	2.5
2BK36	3.75	3.00	3.40	2	1/2, 5/8, 7/8, 1, 1-1/8		1-7/8	-	1-1/8	3.0
2BK40	3.95	3.20	3.60	2	1/2, 5/8, 3/4, 7/8, 1, 1-1/8		1-11/16	-	1-3/16	3.0
2BK45	4.25	3.50	3.90	2	1, 1-1/8, 1-3/8		1-13/16	-	1-1/4	4.0
2BK47	4.45	3.70	4.10	2	1/2, 5/8, 3/4, 7/8, 1, 1-1/8		1-13/16	-	1-1/4	4.0
2BK50	4.75	4.00	4.40	2	1/2, 5/8, 3/4, 7/8, 1, 1-1/8		1-13/16	-	1-1/4	4.0
2BK52	4.95	4.20	4.60	2	1/2, 5/8, 3/4, 7/8, 1, 1-1/8		1-13/16	-	1-5/16	4.0
2BK55	5.25	4.50	4.90	2	1/2, 5/8, 3/4, 7/8, 1, 1-1/8		1-13/16	-	1-5/16	5.0
2BK57	5.45	4.70	5.10	2	1/2, 5/8, 3/4, 7/8, 1, 1-1/8		1-13/16	-	1-5/16	5.0
2BK60	5.75	5.00	5.40	2	3/4, 7/8, 1, 1-1/8, 1-3/8		1-13/16	-	1-11/16	5.0
2BK62	5.95	5.20	5.60	2	5/8, 3/4, 7/8, 1, 1-1/8		1-13/16	-	1-11/16	6.0
2BK65	6.25	5.50	5.90	2	1, 1-1/8, 1-3/8		1-13/16	27/32	1-11/16	6.0
2BK67	6.45	5.70	6.10	2	1/2, 5/8, 3/4, 7/8, 1, 1-1/8		1-13/16	27/32	1-1/4	6.0
2BK70	6.75	6.00	6.40	3	1/2, 5/8, 3/4, 1, 1-1/8		1-13/16	27/32	1-11/16	6.0
2BK80	7.75	7.00	7.40	3	1/2, 5/8, 3/4, 7/8, 1, 1-1/8		1-13/16	27/32	1-11/16	7.0
2BK90	8.75	8.00	8.40	3	3/4, 1, 1-1/8, 1-3/16, 1-3/8, 1-7/16		1-13/16	27/32	1-11/16	8.0
2BK100	9.75	9.00	9.40	3	3/4, 1, 1-1/8, 1-3/16, 1-3/8, 1-7/16		1-13/16	27/32	1-11/16	10.0
2BK110	10.75	10.00	10.40	3	1/2, 5/8, 3/4, 7/8, 1, 1-1/8		1-13/16	27/32	1-11/16	13.0
2BK120	11.75	11.00	11.40	3	1, 1-3/16, 1-7/16		1-13/16	27/32	1-11/16	10.0
2BK130	12.75	12.00	12.40	3	1, 1-3/16, 1-7/16		1-13/16	27/32	1-7/8	15.0
2BK140	13.75	13.00	13.40	3	1/2, 5/8, 3/4, 7/8, 1, 1-1/8		1-13/16	27/32	1-7/8	17.0
2BK160	15.75	15.00	15.40	3	1, 1-3/16, 1-7/16		1-13/16	27/32	1-7/8	18.0
2BK190	18.75	18.00	18.40	3	1-1/8, 1-3/16		1-13/16	27/32	1-7/8	26.0

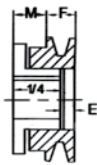
All pictures may differ from the final products. Product availability and specifications are subject to change without notice.

## SHEAVES

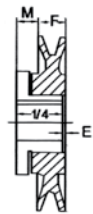
### AKH & 2AKH SHEAVES



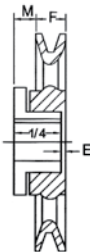
SINGLE GROOVE



TYPE 1 (block)



TYPE 2 (web)



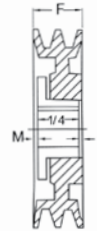
TYPE 3 (arms)



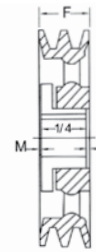
DOUBLE GROOVE



TYPE 1 (block)



TYPE 2 (web)



TYPE 3 (arms)

### AKH for (4L) or (A) Belts and (3L) Belts

Part No.	Diameters			Type	Dimensions			Wt. (lbs)
	Outside	Datum (A) Belts	Pitch (3L) Belts		E	F	M	
AK30H	3.05	2.8	2.46	1	3/8	3/4	31/32	1.15
AK32H	3.25	3.0	2.66	1	3/8	3/4	31/32	1.30
AK34H	3.45	3.2	2.86	2	3/32	3/4	11/16	1.20
AK39H	3.75	3.5	3.16	2	3/32	3/4	11/16	1.50
AK41H	3.95	3.7	3.36	2	3/32	3/4	11/16	1.75
AK44H	4.25	4.0	3.66	2	3/32	3/4	11/16	2.05
AK46H	4.45	4.2	3.86	2	3/32	3/4	11/16	2.25
AK49H	4.75	4.5	4.16	2	3/32	3/4	11/16	2.10
AK51H	4.95	4.7	4.36	2	3/32	3/4	11/16	2.35
AK54H	5.25	5.0	4.66	2	3/32	3/4	11/16	2.65
AK56H	5.45	5.2	4.86	2	3/32	3/4	11/16	2.75
AK59H	5.75	5.5	5.16	2	3/32	3/4	11/16	2.60
AK61H	5.95	5.7	5.36	3	3/32	3/4	11/16	2.50
AK64H	6.25	6.0	5.66	3	3/32	3/4	11/16	2.60
AK66H	6.45	6.2	5.86	3	3/32	3/4	11/16	2.70
AK69H	6.75	6.5	6.16	3	3/32	3/4	11/16	2.85
AK71H	6.95	6.7	6.36	3	3/32	3/4	11/16	2.90
AK74H	7.25	7.0	6.66	3	3/32	3/4	11/16	3.10
AK79H	7.75	7.5	7.16	3	3/32	3/4	11/16	3.35
AK84H	8.25	8.0	7.66	3	3/32	3/4	11/16	3.85
AK89H	8.75	8.5	8.16	3	3/32	3/4	11/16	4.10
AK94H	9.25	9.0	8.66	3	3/32	3/4	11/16	4.40
AK99H	9.75	9.5	9.16	3	3/32	3/4	11/16	4.60
AK104H	10.25	10.0	9.66	3	3/32	3/4	11/16	4.90
AK109H	10.75	10.5	10.16	3	3/32	3/4	11/16	5.20
AK114H	11.25	11.0	10.66	3	3/32	3/4	11/16	5.55
AK124H	12.25	12.0	11.66	3	3/32	3/4	11/16	5.90
AK134H	13.25	13.0	12.66	3	3/32	3/4	11/16	6.55
AK144H	14.25	14.0	13.66	3	3/32	3/4	11/16	7.30
AK154H	15.25	15.0	14.66	3	3/32	3/4	11/16	9.80
AK184H	18.25	18.0	17.66	3	3/32	3/4	11/16	9.95

### 2AKH for (4L) or (A) Belts and (3L) Belts

Part No.	Diameters			Type	Dimensions			Wt. (lbs)
	Outside	Datum (A) Belts	Pitch (3L) Belts		E	F	M	
2AK30H	3.05	2.80	2.46	1	1	1-3/8	31/32	1.70
2AK32H	3.25	3.00	2.66	1	1	1-3/8	31/32	1.90
2AK34H	3.45	3.20	2.86	2	23/32	1-3/8	11/16	1.90
2AK39H	3.75	3.50	3.16	2	23/32	1-3/8	11/16	2.15
2AK41H	3.95	3.70	3.36	2	3/32	1-3/8	11/16	2.30
2AK44H	4.25	4.00	3.66	2	3/32	1-3/8	11/16	2.75
2AK46H	4.45	4.20	3.86	2	3/32	1-3/8	11/16	2.85
2AK49H	4.75	4.50	4.16	2	3/32	1-3/8	11/16	3.50
2AK51H	4.95	4.70	4.36	2	3/32	1-3/8	11/16	3.70
2AK54H	5.25	5.00	4.66	2	3/32	1-3/8	11/16	4.05
2AK56H	5.45	5.20	4.86	2	3/32	1-3/8	11/16	4.20
2AK59H	5.75	5.50	5.16	2	3/32	1-3/8	11/16	3.90
2AK61H	5.95	5.70	5.36	3	3/32	1-3/8	11/16	4.05
2AK64H	6.25	6.00	5.66	3	3/32	1-3/8	11/16	4.50
2AK66H	6.45	6.20	-	-	-	-	-	-
2AK69H	6.75	6.50	-	-	-	-	-	-
2AK71H	6.95	6.70	-	-	-	-	-	-
2AK74H	7.25	7.00	6.66	3	3/32	1-3/8	11/16	5.70
2AK79H	7.75	7.50	-	-	-	-	-	-
2AK84H	8.25	8.00	7.66	3	3/32	1-3/8	11/16	6.50
2AK89H	8.75	8.50	-	-	-	-	-	-
2AK94H	9.25	9.00	8.66	3	3/32	1-3/8	11/16	7.80
2AK99H	9.75	9.50	-	-	-	-	-	-
2AK104H	10.25	10.00	9.66	3	3/32	1-3/8	11/16	8.80
2AK109H	10.75	10.50	-	-	3/32	1-3/8	11/16	5.20
2AK114H	11.25	11.00	10.66	3	3/32	1-3/8	11/16	9.50
2AK124H	12.25	12.00	11.66	3	3/32	1-3/8	11/16	10.60
2AK134H	13.25	13.00	12.66	3	3/32	1-3/8	11/16	11.90
2AK144H	14.25	14.00	13.66	3	3/32	1-3/8	11/16	12.45
2AK154H	15.25	15.00	14.66	3	3/32	1-3/8	11/16	14.00
2AK184H	18.25	18.00	17.66	3	3/32	1-3/8	11/16	17.95

All pictures may differ from the final products. Product availability and specifications are subject to change without notice.



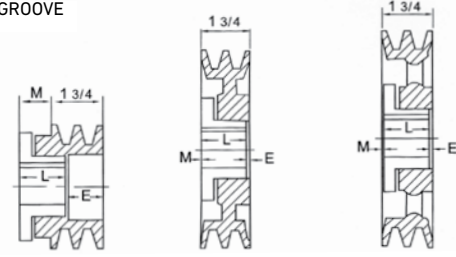
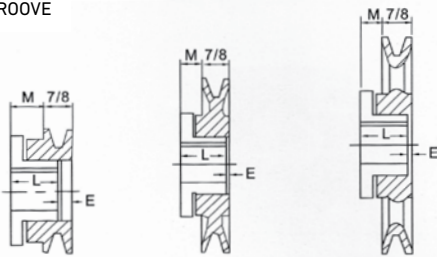
# SHEAVES

## BKH & 2BKH SHEAVES



SINGLE GROOVE

DOUBLE GROOVE



TYPE 1 (block)

TYPE 2 (web)

TYPE 3 (arms)

TYPE 1 (block)

TYPE 2 (web)

TYPE 3 (arms)

### BKH for (4L) or (A) Belts and (5L) or (B) Belts

Part No.	Diameters			Type	Dimensions			Wt. (lbs)
	Outside	Datum (A) Belts	Datum (B) Belts		E	L	M	
BK30H	3.15	2.40	2.80	1	17/32	1-11/32	63/64	1.25
BK32H	3.35	2.60	3.00	1	17/32	1-11/32	63/64	1.40
BK34H	3.55	2.80	3.20	1	17/32	1-11/32	63/64	1.65
BK36H	3.75	3.00	3.40	1	3/32	1-11/32	17/32	1.40
BK40H	3.95	3.20	3.60	1	3/32	1-11/32	17/32	1.70
BK45H	4.25	3.50	3.90	1	3/32	1-11/32	17/32	2.05
BK47H	4.45	3.70	4.10	1	3/32	1-11/32	17/32	2.35
BK50H	4.75	4.00	4.40	3	3/32	1-11/32	17/32	1.95
BK52H	4.95	4.20	4.60	3	3/32	1-11/32	17/32	2.40
BK55H	5.25	4.50	4.90	3	3/32	1-11/32	17/32	2.35
BK57H	5.45	4.70	5.10	3	3/32	1-11/32	17/32	2.90
BK60H	5.75	5.00	5.40	5	3/32	1-11/32	17/32	2.45
BK62H	5.95	5.20	5.60	5	3/32	1-11/32	17/32	2.80
BK65H	6.25	5.50	5.90	5	3/32	1-11/32	17/32	2.70
BK67H	6.45	5.70	6.10	5	3/32	1-11/32	17/32	2.80
BK70H	6.75	6.00	6.40	5	3/32	1-11/32	17/32	3.00
BK72H	6.95	6.20	6.60	5	3/32	1-11/32	17/32	3.60
BK75H	7.25	6.50	6.90	5	3/32	1-11/32	17/32	3.45
BK77H	7.45	6.70	7.10	5	3/32	1-11/32	17/32	3.65
BK80H	7.75	7.00	7.40	5	3/32	1-11/32	17/32	3.80
BK85H	8.25	7.50	7.90	5	3/32	1-11/32	17/32	4.55
BK90H	8.75	8.00	8.40	5	3/32	1-11/32	17/32	5.10
BK95H	9.25	8.50	8.90	5	3/32	1-11/32	17/32	5.30
BK100H	9.75	9.00	9.40	5	3/32	1-11/32	17/32	5.80
BK105H	10.25	9.50	9.90	5	3/32	1-11/32	17/32	5.50
BK110H	10.75	10.00	10.40	5	3/32	1-11/32	17/32	5.85
BK115H	11.25	10.50	10.90	5	3/32	1-11/32	17/32	7.20
BK120H	11.75	11.00	11.40	5	3/32	1-11/32	17/32	6.59
BK130H	12.75	12.00	12.40	5	3/32	1-11/32	17/32	7.90
BK140H	13.75	13.00	13.40	5	3/32	1-11/32	17/32	10.15
BK150H	14.75	14.00	14.40	5	3/32	1-11/32	17/32	13.25
BK160H	15.75	15.00	15.40	5	3/32	1-11/32	17/32	16.05
BK190H	18.75	18.00	18.40	5	3/32	1-11/32	17/32	12.45

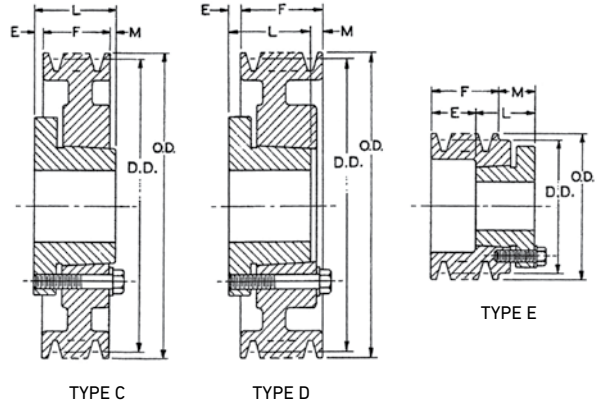
### 2BKH for (4L) or (A) Belts and (5L) or (B) Belts

Part No.	Diameters			Type	Dimensions			Wt. (lbs)
	Outside	Datum (A) Belts	Datum (B) Belts		E	L	M	
2BK32H	3.35	2.60	3.00	2	1-3/8	1-11/32	31/32	2.35
2BK34H	3.55	2.80	3.20	2	1-3/8	1-11/32	31/32	2.55
2BK36H	3.75	3.00	3.40	2	1-3/8	1-11/32	31/32	3.00
2BK40H	3.95	3.20	3.60	2	1-5/16	1-11/32	17/32	2.80
2BK45H	4.25	3.50	3.90	2	1-5/16	1-11/32	17/32	3.25
2BK47H	4.45	3.70	4.10	4	1-5/16	1-11/32	17/32	3.35
2BK50H	4.75	4.00	4.40	4	3/32	1-11/32	5/16	3.85
2BK52H	4.95	4.20	4.60	4	3/32	1-11/32	5/16	4.00
2BK55H	5.25	4.50	4.90	4	3/32	1-11/32	5/16	4.40
2BK57H	5.45	4.70	5.10	4	3/32	1-11/32	5/16	4.95
2BK60H	5.75	5.00	5.40	4	3/32	1-11/32	5/16	5.30
2BK62H	5.95	5.20	5.60	6	3/32	1-11/32	5/16	5.80
2BK65H	6.25	5.50	5.90	6	1/16	1-11/32	11/32	5.40
2BK67H	6.45	5.70	6.10	6	1/16	1-11/32	11/32	5.85
2BK70H	6.75	6.00	6.40	6	1/16	1-11/32	11/32	5.55
2BK80H	7.75	7.00	7.40	6	1/16	1-11/32	11/32	6.85
2BK90H	8.75	8.00	8.40	6	1/16	1-11/32	11/32	9.65
2BK100H	9.75	9.00	9.40	6	1/16	1-11/32	11/32	9.20
2BK110H	10.75	10.00	10.40	6	1/16	1-11/32	11/32	12.80
2BK120H	11.75	11.00	11.40	6	1/16	1-11/32	11/32	14.65
2BK130H	12.75	12.00	12.40	6	1/16	1-11/32	11/32	14.15
2BK140H	13.75	13.00	13.40	6	1/16	1-11/32	11/32	14.95
2BK160H	15.75	15.00	15.40	6	1/16	1-11/32	11/32	18.70
2BK190H	18.75	18.00	18.40	6	1/16	1-11/32	11/32	24.20

All pictures may differ from the final products. Product availability and specifications are subject to change without notice.

## SHEAVES

### QD SHEAVES



### “A/B” COMBINATION - 1-GROOVE

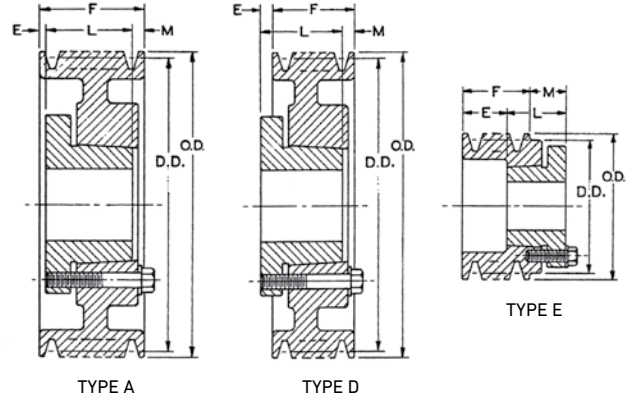
Diameters		1-Groove, F = 7/8" up to 7.35 O.D., F = 1" for O.D. greater than 7.35						Type	Wt. Less Bushing (lbs)
Datum "A"	Datum "B"	Part No.		Dimensions					
		Sheave	Bushing	O.D.	E	L	M		
3.0	3.4	1B34SH	SH	3.75	7/32	1-5/16	21/32	E-1	2.0
3.2	3.6	1B36SH	SH	3.95	19/32	1-5/16	5/32	D-1	2.2
3.4	3.8	1B38SH	SH	4.15	19/32	1-5/16	5/32	D-1	2.4
3.6	4.0	1B40SH	SH	4.35	11/32	1-5/16	3/32	C-1	2.7
3.8	4.2	1B42SH	SH	4.55	11/32	1-5/16	3/32	C-1	2.9
4.0	4.4	1B44SH	SH	4.75	11/32	1-5/16	3/32	C-1	3.4
4.2	4.6	1B46SDS	SDS	4.95	11/32	1-5/16	3/32	C-1	4.0
4.4	4.8	1B48SDS	SDS	5.15	11/32	1-5/16	3/32	C-1	4.3
4.6	5.0	1B50SDS	SDS	5.35	11/32	1-5/16	3/32	C-1	4.7
4.8	5.2	1B52SDS	SDS	5.55	11/32	1-5/16	3/32	C-1	5.0
5.0	5.4	1B54SDS	SDS	5.75	11/32	1-5/16	3/32	C-1	5.3
5.2	5.6	1B56SDS	SDS	5.95	11/32	1-5/16	3/32	C-1	5.6
5.4	5.8	1B58SDS	SDS	6.15	11/32	1-5/16	3/32	C-2	5.9
5.6	6.0	1B60SDS	SDS	6.35	11/32	1-5/16	3/32	C-2	6.2
5.8	6.2	1B62SDS	SDS	6.55	11/32	1-5/16	3/32	C-2	6.5
6.0	6.4	1B64SDS	SDS	6.75	11/32	1-5/16	3/32	C-2	6.8
6.2	6.6	1B66SDS	SDS	6.95	11/32	1-5/16	3/32	C-2	7.2
6.4	6.8	1B68SDS	SDS	7.15	11/32	1-5/16	3/32	C-3	7.5
6.6	7.0	1B70SDS	SDS	7.35	11/32	1-5/16	3/32	C-3	7.8
7.0	7.4	1B74SDS	SDS	7.75	17/32	1-5/16	7/32	D-3	8.8
7.6	8.0	1B80SDS	SDS	8.35	17/32	1-5/16	7/32	D-3	9.6
8.2	8.6	1B86SDS	SDS	8.95	17/32	1-5/16	7/32	D-3	10.0
8.6	9.0	1B90SDS	SDS	9.35	17/32	1-5/16	7/32	D-3	10.5
9.0	9.4	1B94SDS	SDS	9.75	17/32	1-5/16	7/32	D-3	10.5
10.6	11.0	1B110SDS	SDS	11.35	17/32	1-5/16	7/32	D-3	11.0
12.0	12.4	1B124SDS	SDS	12.75	17/32	1-5/16	7/32	D-3	12.0
13.2	13.6	1B136SDS	SDS	13.95	17/32	1-5/16	7/32	D-3	14.0
15.0	15.4	1B154SK	SK	15.75	21/32	1-15/16	9/32	C-3	16.0
15.6	16.0	1B160SK	SK	16.35	21/32	1-15/16	9/32	C-3	16.6
18.0	18.4	1B184SK	SK	18.75	21/32	1-15/16	9/32	C-3	18.0
19.6	20.0	1B200SK	SK	20.35	21/32	1-15/16	9/32	C-3	20.0
24.5	25.0	1B250SK	SK	25.35	21/32	1-15/16	9/32	C-3	30.0

Suffix on Type indicates: 1 = Solid Construction, 2 = Web Construction, 3 = Arm Construction.

All pictures may differ from the final products. Product availability and specifications are subject to change without notice.

# SHEAVES

## QD SHEAVES



### “A/B” COMBINATION - 2-GROOVES

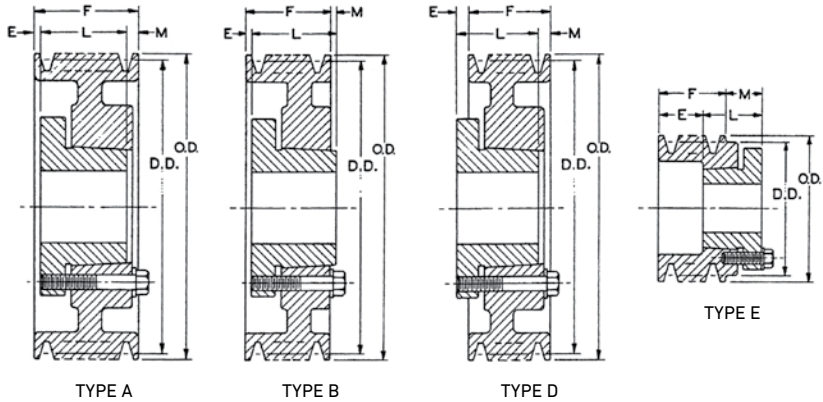
Diameters		2-Grooves, F = 1-3/4"						Type	Wt. Less Bushing (lbs)
Datum "A"	Datum "B"	Part No.		Dimensions					
		Sheave	Bushing	O.D.	E	L	M		
3.0	3.4	2B34SH	SH	3.75	1-3/32	1-5/16	21/32	E-1	3.2
3.2	3.6	2B36SH	SH	3.95	15/32	1-5/16	29/32	D-1	3.4
3.4	3.8	2B38SH	SH	4.15	15/32	1-5/16	29/32	D-1	3.9
3.6	4.0	2B40SH	SH	4.35	1/32	1-5/16	13/32	A-1	4.1
3.8	4.2	2B42SH	SH	4.55	1/32	1-5/16	13/32	A-1	4.4
4.0	4.4	2B44SH	SH	4.75	1/32	1-5/16	13/32	A-1	4.6
4.2	4.6	2B46SDS	SDS	4.95	1/32	1-5/16	13/32	A-1	5.0
4.4	4.8	2B48SDS	SDS	5.15	1/32	1-5/16	13/32	A-1	5.4
4.6	5.0	2B50SDS	SDS	5.35	1/32	1-5/16	13/32	A-1	6.0
4.8	5.2	2B52SDS	SDS	5.55	1/32	1-5/16	13/32	A-1	6.3
5.0	5.4	2B54SDS	SDS	5.75	1/32	1-5/16	13/32	A-1	6.6
5.2	5.6	2B56SDS	SDS	5.95	1/32	1-5/16	13/32	A-2	6.9
5.4	5.8	2B58SDS	SDS	6.15	1/32	1-5/16	13/32	A-2	7.2
5.6	6.0	2B60SDS	SDS	6.35	1/32	1-5/16	13/32	A-2	7.5
5.8	6.2	2B62SDS	SDS	6.55	1/32	1-5/16	13/32	A-2	7.8
6.0	6.4	2B64SDS	SDS	6.75	1/32	1-5/16	13/32	A-2	8.2
6.2	6.6	2B66SDS	SDS	6.95	1/32	1-5/16	13/32	A-2	8.6
6.4	6.8	2B68SDS	SDS	7.15	1/32	1-5/16	13/32	A-3	9.0
6.6	7.0	2B70SK	SK	7.35	11/32	1-15/16	5/32	D-1	9.3
7.0	7.4	2B74SK	SK	7.75	11/32	1-15/16	5/32	D-3	10.6
7.6	8.0	2B80SK	SK	8.35	11/32	1-15/16	5/32	D-3	11.0
8.2	8.6	2B86SK	SK	8.95	11/32	1-15/16	5/32	D-3	11.6
8.6	9.0	2B90SK	SK	9.35	11/32	1-15/16	5/32	D-3	13.0
9.0	9.4	2B94SK	SK	9.75	11/32	1-15/16	5/32	D-3	14.0
10.6	11.0	2B110SK	SK	11.35	11/32	1-15/16	5/32	D-3	18.0
12.0	12.4	2B124SK	SK	12.75	11/32	1-15/16	5/32	D-3	20.0
13.2	13.6	2B136SK	SK	13.95	11/32	1-15/16	5/32	D-3	23.0
15.0	15.4	2B154SK	SK	15.75	11/32	1-15/16	5/32	D-3	24.0
15.6	16.0	2B160SK	SK	16.35	11/32	1-15/16	5/32	D-3	29.0
18.0	18.4	2B184SK	SK	18.75	11/32	1-15/16	5/32	D-3	33.0
19.6	20.0	2B200SF	SF	20.35	15/32	2-1/16	5/32	D-3	41.0
24.6	25.0	2B250SF	SF	25.35	15/32	2-1/16	5/32	D-3	51.0
29.6	30.0	2B300SF	SF	30.35	15/32	2-1/16	5/32	D-3	64.0
37.6	38.0	2B380SF	SF	38.35	15/32	2-1/16	5/32	D-3	85.0

Suffix on Type indicates: 1 = Solid Construction, 2 = Web Construction, 3 = Arm Construction.

All pictures may differ from the final products. Product availability and specifications are subject to change without notice.

## SHEAVES

### QD SHEAVES



### "A/B" COMBINATION - 3-GROOVES

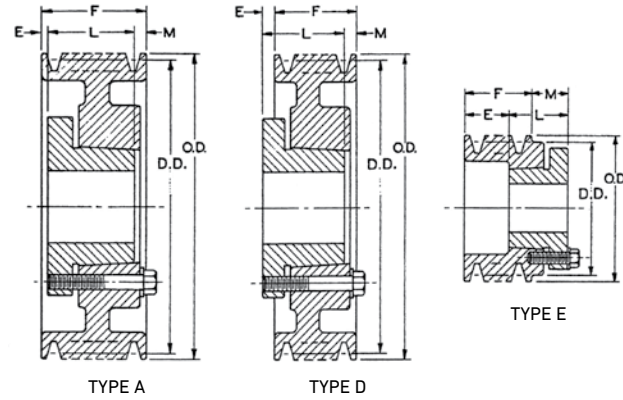
Diameters		3-Grooves, F = 2-1/2"						Type	Wt. Less Bushing (lbs)
Datum "A"	Datum "B"	Part No.		Dimensions					
		Sheave	Bushing	O.D.	E	L	M		
3.0	3.4	3B34SH	SH	3.75	1-27/32	1-5/16	21/32	E-1	4.4
3.2	3.6	3B36SH	SH	3.95	15/32	1-5/16	1-21/32	D-1	4.7
3.4	3.8	3B38SH	SH	4.15	15/32	1-5/16	1-21/32	D-1	5.3
3.6	4.0	3B40SH	SH	4.35	15/32	1-5/16	1-21/32	D-1	5.6
3.8	4.2	3B42SH	SH	4.55	15/32	1-5/16	1-21/32	D-1	5.9
4.0	4.4	3B44SH	SH	4.75	15/32	1-5/16	1-21/32	D-1	6.3
4.2	4.6	3B46SD	SD	4.95	13/32	1-13/16	9/32	A-1	6.7
4.4	4.8	3B48SD	SD	5.15	13/32	1-13/16	9/32	A-1	7.1
4.6	5.0	3B50SD	SD	5.35	13/32	1-13/16	9/32	A-1	7.4
4.8	5.2	3B52SD	SD	5.55	13/32	1-13/16	9/32	A-1	7.8
5.0	5.4	3B54SD	SD	5.75	13/32	1-13/16	9/32	A-1	8.2
5.2	5.6	3B56SD	SD	5.95	13/32	1-13/16	9/32	A-1	8.5
5.4	5.8	3B58SD	SD	6.15	13/32	1-13/16	9/32	A-1	8.8
5.6	6.0	3B60SD	SD	6.35	13/32	1-13/16	9/32	A-1	9.1
5.8	6.2	3B62SD	SD	6.55	13/32	1-13/16	9/32	A-1	9.4
6.0	6.4	3B64SD	SD	6.75	13/32	1-13/16	9/32	A-1	9.7
6.2	6.6	3B66SD	SD	6.95	13/32	1-13/16	9/32	A-1	10.0
6.4	6.8	3B68SD	SD	7.15	13/32	1-13/16	9/32	B-3	10.5
6.6	7.0	3B70SK	SK	7.35	3/32	1-15/16	21/32	D-1	11.0
7.0	7.4	3B74SK	SK	7.75	3/32	1-15/16	21/32	D-3	12.0
7.6	8.0	3B80SK	SK	8.35	3/32	1-15/16	21/32	D-3	12.5
8.2	8.6	3B86SK	SK	8.95	3/32	1-15/16	21/32	D-3	13.0
8.6	9.0	3B90SK	SK	9.35	3/32	1-15/16	21/32	D-3	14.5
9.0	9.4	3B94SK	SK	9.75	3/32	1-15/16	21/32	D-3	16.0
10.6	11.0	3B110SK	SK	11.35	3/32	1-15/16	21/32	D-3	19.0
12.0	12.4	3B124SK	SK	12.75	3/32	1-15/16	21/32	D-3	24.0
13.2	13.6	3B136SK	SK	13.95	3/32	1-15/16	21/32	D-3	27.0
15.0	15.4	3B154SK	SK	15.75	3/32	1-15/16	21/32	D-3	30.0
15.6	16.0	3B160SK	SK	16.35	3/32	1-15/16	21/32	D-3	33.0
18.0	18.4	3B184SK	SK	18.75	3/32	1-15/16	21/32	D-3	38.0
19.6	20.0	3B200SF	SF	20.35	7/32	2-1/16	21/32	D-3	43.0
24.6	25.0	3B250SF	SF	25.35	7/32	2-1/16	21/32	D-3	54.0
29.6	30.0	3B300SF	SF	30.35	7/32	2-1/16	21/32	D-3	67.0
37.6	38.0	3B380E	E	38.35	17/32	2-3/4	9/32	D-3	90.0

Suffix on Type indicates: 1 = Solid Construction, 3 = Arm Construction.

All pictures may differ from the final products. Product availability and specifications are subject to change without notice.

# SHEAVES

## QD SHEAVES



### "A/B" COMBINATION - 4-GROOVES

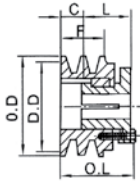
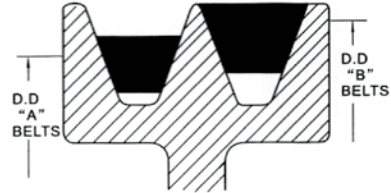
Diameters		4-Grooves, F = 3-1/4"						Type	Wt. Less Bushing (lbs)
Datum "A"	Datum "B"	Part No.		Dimensions					
		Sheave	Bushing	O.D.	E	L	M		
3.0	3.4	4B34SD	SD	3.75	2-15/32	1-13/16	1-1/32	E-1	5.5
3.2	3.6	4B36SD	SD	3.95	2-15/32	1-13/16	1-1/32	E-1	5.8
3.4	3.8	4B38SD	SD	4.15	2-15/32	1-13/16	1-1/32	E-1	6.2
3.6	4.0	4B40SD	SD	4.35	2-3/32	1-13/16	21/32	E-1	6.6
3.8	4.2	4B42SD	SD	4.55	2-3/32	1-13/16	21/32	E-1	6.9
4.0	4.4	4B44SD	SD	4.75	2-3/32	1-13/16	21/32	E-1	7.2
4.2	4.6	4B46SD	SD	4.95	21/32	1-13/16	25/32	A-1	7.6
4.4	4.8	4B48SD	SD	5.15	21/32	1-13/16	25/32	A-1	8.0
4.6	5.0	4B50SD	SD	5.35	21/32	1-13/16	25/32	A-1	8.4
4.8	5.2	4B52SD	SD	5.55	21/32	1-13/16	25/32	A-1	8.8
5.0	5.4	4B54SD	SD	5.75	21/32	1-13/16	25/32	A-1	9.2
5.2	5.6	4B56SD	SD	5.95	21/32	1-13/16	25/32	A-1	9.6
5.4	5.8	4B58SD	SD	6.15	21/32	1-13/16	25/32	A-1	10.0
5.6	6.0	4B60SD	SD	6.35	21/32	1-13/16	25/32	A-1	10.4
5.8	6.2	4B62SD	SD	6.55	21/32	1-13/16	25/32	A-1	10.8
6.0	6.4	4B64SD	SD	6.75	21/32	1-13/16	25/32	A-1	12.0
6.2	6.6	4B66SD	SD	6.95	21/32	1-13/16	25/32	A-1	12.4
6.4	6.8	4B68SD	SD	7.15	21/32	1-13/16	25/32	A-3	13.0
6.6	7.0	4B70SK	SK	7.35	7/32	1-15/16	1-3/32	A-1	13.5
7.0	7.4	4B74SK	SK	7.75	7/32	1-15/16	1-3/32	A-3	14.0
7.6	8.0	4B80SK	SK	8.35	7/32	1-15/16	1-3/32	A-3	15.5
8.2	8.6	4B86SK	SK	8.95	7/32	1-15/16	1-3/32	A-3	17.0
8.6	9.0	4B90SK	SK	9.35	7/32	1-15/16	1-3/32	A-3	18.0
9.0	9.4	4B94SK	SK	9.75	7/32	1-15/16	1-3/32	A-3	19.0
10.6	11.0	4B110SK	SK	11.35	7/32	1-15/16	1-3/32	A-3	22.0
12.0	12.4	4B124SK	SK	12.75	7/32	1-15/16	1-3/32	A-3	29.0
13.2	13.6	4B136SK	SK	13.95	7/32	1-15/16	1-3/32	A-3	34.0
15.0	15.4	4B154SF	SF	15.75	5/32	2-1/16	1-1/32	A-3	39.0
15.6	16.0	4B160SF	SF	16.35	5/32	2-1/16	1-1/32	A-3	42.0
18.0	18.4	4B184SF	SF	18.75	5/32	2-1/16	1-1/32	A-3	47.0
19.6	20.0	4B200SF	SF	20.35	5/32	2-1/16	1-1/32	A-3	51.0
24.6	25.0	4B250E	E	25.35	5/32	2-3/4	21/32	D-3	73.0
29.6	30.0	4B300E	E	30.35	5/32	2-3/4	21/32	D-3	86.0
37.6	38.0	4B380E	E	38.35	5/32	2-3/4	21/32	D-3	109.0

Suffix on Type indicates: 1 = Solid Construction, 3 = Arm Construction.

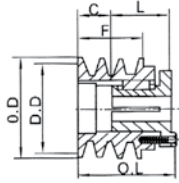
All pictures may differ from the final products. Product availability and specifications are subject to change without notice.

## SHEAVES

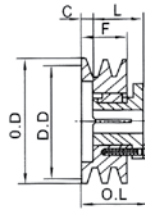
### SPLIT TAPER SHEAVES



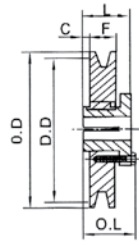
TYPE 2



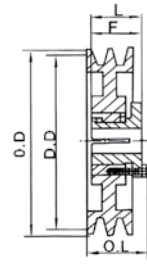
TYPE 3



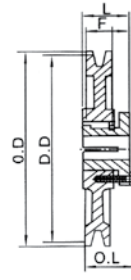
TYPE 5



TYPE 10



TYPE 13



TYPE 16

### For use with (A) or (B) Belts - 1-GROOVE

Diameters		Outside	1-Groove, F = 1"							Wt. Less Bushing (lbs)
Datum "A"	Datum "B"		Part No.		Type	Dimensions				
			Sheave	Bushing		O.L.	L	C		
3.0	3.4	3.75	1TB34	P1	2	2-5/16	1-15/16	1/8	2.0	
3.2	3.6	3.95	1TB36	P1	2	2-5/16	1-15/16	1/8	2.3	
3.4	3.8	4.15	1TB38	P1	2	2-5/16	1-15/16	1/8	2.6	
3.6	4.0	4.35	1TB40	P1	10-Solid	2-3/16	1-15/16	5/16	2.1	
3.8	4.2	4.55	1TB42	P1	10-Solid	2-3/16	1-15/16	5/16	2.4	
4.0	4.4	4.75	1TB44	P1	10-Solid	2-3/16	1-15/16	5/16	2.8	
4.2	4.6	4.95	1TB46	P1	10-Solid	2-3/16	1-15/16	5/16	3.1	
4.4	4.8	5.15	1TB48	P1	10-Solid	2-3/16	1-15/16	5/16	3.5	
4.6	5.0	5.35	1TB50	P1	10-Solid	2-3/16	1-15/16	5/16	3.9	
4.8	5.2	5.55	1TB52	P1	10-Solid	2-3/16	1-15/16	5/16	4.1	
5.0	5.4	5.75	1TB54	P1	10-Solid	2-3/16	1-15/16	5/16	4.6	
5.2	5.6	5.95	1TB56	P1	10-Solid	2-3/16	1-15/16	5/16	5.1	
5.4	5.8	6.15	1TB58	P1	10-Solid	2-3/16	1-15/16	5/16	5.6	
5.6	6.0	6.35	1TB60	P1	10-Web	2-3/16	1-15/16	5/16	6.0	
5.8	6.2	6.55	1TB62	P1	10-Web	2-3/16	1-15/16	5/16	5.5	
6.0	6.4	6.75	1TB64	P1	10-Web	2-3/16	1-15/16	5/16	5.8	
6.2	6.6	6.95	1TB66	P1	10-Web	2-3/16	1-15/16	5/16	5.9	
6.4	6.8	7.15	1TB68	P1	10-Web	2-3/16	1-15/16	5/16	6.1	
6.6	7.0	7.35	1TB70	P1	16-Arm	2-3/16	1-15/16	5/32	6.4	
7.0	7.4	7.75	1TB74	P1	16-Arm	2-3/16	1-15/16	5/32	7.3	
7.6	8.0	8.35	1TB80	P1	16-Arm	2-3/16	1-15/16	5/32	7.8	
8.2	8.6	8.95	1TB86	P1	16-Arm	2-3/16	1-15/16	5/32	8.6	
8.6	9.0	9.35	1TB90	P1	16-Arm	2-3/16	1-15/16	5/32	8.9	
9.0	9.4	9.75	1TB94	P1	16-Arm	2-3/16	1-15/16	5/32	9.1	
10.6	11.0	11.35	1TB110	P1	16-Arm	2-3/16	1-15/16	5/32	11.1	
12.0	12.4	12.75	1TB124	P1	16-Arm	2-25/32	2-1/2	3/8	17.8	
13.2	13.6	13.95	1TB136	P1	16-Arm	2-25/32	2-1/2	3/8	18.2	
15.0	15.4	15.75	1TB154	P1	16-Arm	2-25/32	2-1/2	3/8	20.3	
15.6	16.0	16.35	1TB160	P1	16-Arm	2-25/32	2-1/2	3/8	22.0	
18.0	18.4	18.75	1TB184	P1	16-Arm	2-25/32	2-1/2	3/8	27.5	
19.5	20.0	20.35	1TB200	P1	16-Arm	2-25/32	2-1/2	3/8	27.2	
24.5	25.0	25.35	1TB250	P1	16-Arm	2-25/32	2-1/2	3/8	42.4	
29.5	30.0	30.35	1TB300	P1	16-Arm	2-25/32	2-1/2	3/8	56.0	
37.5	38.0	38.35	1TB380	P1	16-Arm	2-25/32	2-1/2	3/8	78.0	

All pictures may differ from the final products. Product availability and specifications are subject to change without notice.

# SHEAVES

## SPLIT TAPER SHEAVES

For use with (A) or (B) Belts - 2-GROOVES

Diameters		Outside	2-Grooves, F = 1-3/4"						Wt. Less Bushing (lbs)
Datum "A"	Datum "B"		Part No.		Type	Dimensions			
			Sheave	Bushing		O.L.	L	C	
3.0	3.4	3.75	2TB34	P1	2	3-1/16	1-15/16	7/8	2.9
3.2	3.6	3.95	2TB36	P1	2	3-1/16	1-15/16	7/8	3.8
3.4	3.8	4.15	2TB38	P1	5	2-5/8	1-15/16	7/16	3.0
3.6	4.0	4.35	2TB40	P1	5	2-5/8	1-15/16	7/16	3.8
3.8	4.2	4.55	2TB42	P1	5	2-5/8	1-15/16	7/16	3.9
4.0	4.4	4.75	2TB44	P1	13-Solid	2-3/16	1-15/16	0	3.9
4.2	4.6	4.95	2TB46	P1	13-Solid	2-3/16	1-15/16	0	4.5
4.4	4.8	5.15	2TB48	P1	13-Solid	2-3/16	1-15/16	0	5.3
4.6	5.0	5.35	2TB50	P1	13-Solid	2-3/16	1-15/16	0	5.6
4.8	5.2	5.55	2TB52	P1	13-Solid	2-3/16	1-15/16	0	6.1
5.0	5.4	5.75	2TB54	P1	13-Solid	2-3/16	1-15/16	0	6.5
5.2	5.6	5.95	2TB56	P1	13-Solid	2-3/16	1-15/16	0	7.4
5.4	5.8	6.15	2TB58	P1	13-Solid	2-3/16	1-15/16	0	8.0
5.6	6.0	6.35	2TB60	P1	13-Solid	2-3/16	1-15/16	0	8.9
5.8	6.2	6.55	2TB62	P1	13-Web	2-3/16	1-15/16	0	7.6
6.0	6.4	6.75	2TB64	P1	13-Web	2-3/16	1-15/16	0	7.8
6.2	6.6	6.95	2TB66	P1	13-Web	2-3/16	1-15/16	0	8.3
6.4	6.8	7.15	2TB68	P1	13-Web	2-3/16	1-15/16	0	8.8
6.6	7.0	7.35	2TB70	Q1	13-Web	2-25/32	2-1/2	0	11.1
7.0	7.4	7.75	2TB74	Q1	13-Web	2-25/32	2-1/2	0	11.5
7.6	8.0	8.35	2TB80	Q1	13-Web	2-25/32	2-1/2	0	12.8
8.2	8.6	8.95	2TB86	Q1	13-Web	2-25/32	2-1/2	0	16.0
8.6	9.0	9.35	2TB90	Q1	13-Arm	2-25/32	2-1/2	0	15.1
9.0	9.4	9.75	2TB94	Q1	13-Arm	2-25/32	2-1/2	0	15.1
10.6	11.0	11.35	2TB110	Q1	13-Arm	2-25/32	2-1/2	0	18.9
12.0	12.4	12.75	2TB124	Q1	13-Arm	2-25/32	2-1/2	0	21.1
13.2	13.6	13.95	2TB136	Q1	13-Arm	2-25/32	2-1/2	0	23.0
15.0	15.4	15.75	2TB154	Q1	13-Arm	2-25/32	2-1/2	0	24.8
15.6	16.0	16.35	2TB160	Q1	13-Arm	2-25/32	2-1/2	0	27.0
18.0	18.4	18.75	2TB184	Q1	13-Arm	2-25/32	2-1/2	0	32.3
19.5	20.0	20.35	2TB200	Q1	13-Arm	2-25/32	2-1/2	0	42.3
24.5	25.0	25.35	2TB250	Q1	13-Arm	2-25/32	2-1/2	0	50.3
29.5	30.0	30.35	2TB300	Q1	13-Arm	2-25/32	2-1/2	0	68.8
37.5	38.0	38.35	2TB380	Q1	13-Arm	2-25/32	2-1/2	0	95.5

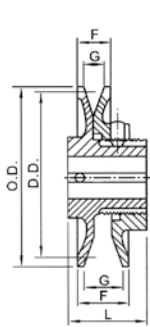
For use with (A) or (B) Belts - 3-GROOVES

Diameters		Outside	3-Grooves, F = 2-1/2"						Wt. Less Bushing (lbs)
Datum "A"	Datum "B"		Part No.		Type	Dimensions			
			Sheave	Bushing		O.L.	L	C	
3.0	3.4	3.75	3TB34	P2	3	3-13/16	2-15/16	5/8	3.8
3.2	3.6	3.95	3TB36	P2	3	3-13/16	2-15/16	5/8	4.4
3.4	3.8	4.15	3TB38	P1	5	3-3/8	1-15/16	1-3/16	3.8
3.6	4.0	4.35	3TB40	P1	5	3-3/8	1-15/16	1-3/16	4.5
3.8	4.2	4.55	3TB42	P1	5	3-3/8	1-15/16	1-3/16	4.9
4.0	4.4	4.75	3TB44	P1	13-Solid	2-3/4	1-15/16	9/16	5.1
4.2	4.6	4.95	3TB46	P1	13-Web	2-3/4	1-15/16	9/16	6.0
4.4	4.8	5.15	3TB48	P1	13-Web	2-3/4	1-15/16	9/16	6.3
4.6	5.0	5.35	3TB50	P1	13-Web	2-3/4	1-15/16	9/16	6.9
4.8	5.2	5.55	3TB52	P1	13-Web	2-3/4	1-15/16	9/16	7.5
5.0	5.4	5.75	3TB54	P1	13-Web	2-3/4	1-15/16	9/16	8.3
5.2	5.6	5.95	3TB56	P1	13-Web	2-3/4	1-15/16	9/16	9.0
5.4	5.8	6.15	3TB58	P1	13-Web	2-3/4	1-15/16	9/16	9.6
5.6	6.0	6.35	3TB60	P1	13-Web	2-3/4	1-15/16	9/16	10.5
5.8	6.2	6.55	3TB62	P1	13-Web	2-3/4	1-15/16	9/16	9.4
6.0	6.4	6.75	3TB64	P1	13-Web	2-3/4	1-15/16	9/16	9.5
6.2	6.6	6.95	3TB66	P1	13-Web	2-3/4	1-15/16	9/16	10.0
6.4	6.8	7.15	3TB68	P1	13-Web	2-3/4	1-15/16	9/16	10.4
6.6	7.0	7.35	3TB70	Q1	13-Web	3-5/32	2-1/2	3/8	13.0
7.0	7.4	7.75	3TB74	Q1	13-Web	3-5/32	2-1/2	3/8	13.3
7.6	8.0	8.35	3TB80	Q1	13-Web	3-5/32	2-1/2	3/8	15.3
8.2	8.6	8.95	3TB86	Q1	13-Web	3-5/32	2-1/2	3/8	18.9
8.6	9.0	9.35	3TB90	Q1	13-Arm	3-5/32	2-1/2	3/8	18.1
9.0	9.4	9.75	3TB94	Q1	13-Arm	3-5/32	2-1/2	3/8	18.0
10.6	11.0	11.35	3TB110	Q1	13-Arm	3-5/32	2-1/2	3/8	21.3
12.0	12.4	12.75	3TB124	Q1	13-Arm	3-5/32	2-1/2	3/8	25.4
13.2	13.6	13.95	3TB136	Q1	13-Arm	3-5/32	2-1/2	3/8	27.4
15.0	15.4	15.75	3TB154	Q1	13-Arm	3-5/32	2-1/2	3/8	29.8
15.6	16.0	16.35	3TB160	Q1	13-Arm	3-5/32	2-1/2	3/8	32.0
18.0	18.4	18.75	3TB184	Q1	13-Arm	3-5/32	2-1/2	3/8	37.8
19.5	20.0	20.35	3TB200	Q1	13-Arm	3-5/32	2-1/2	3/8	49.9
24.5	25.0	25.35	3TB250	Q1	13-Arm	3-5/32	2-1/2	3/8	61.0
29.5	30.0	30.35	3TB300	Q1	13-Arm	3-5/32	2-1/2	3/8	78.5
37.5	38.0	38.35	3TB380	Q1	13-Arm	3-5/32	2-1/2	3/8	110.0

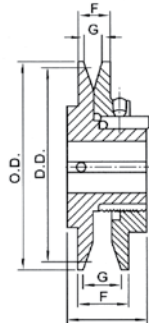
All pictures may differ from the final products. Product availability and specifications are subject to change without notice.

## SHEAVES

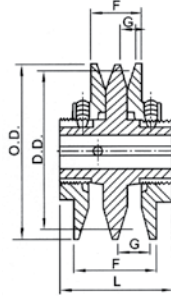
### VARIABLE PITCH SHEAVES



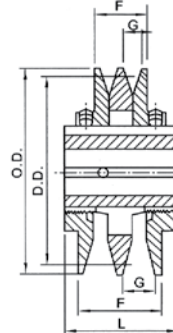
TYPE 1



TYPE 2



TYPE 4

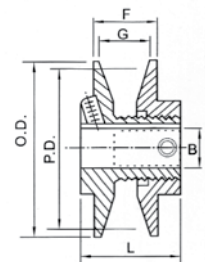
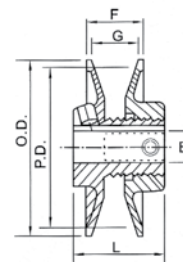


TYPE 5

Part No.	Type	O.D.	F		G		L	Wt. (lbs)
			Max.	Min.	Max.	Min.		
1VP25	1	2.32	13/16	9/16	5/8	3/8	1-19/32	0.7
1VP30	1	2.87	13/16	9/16	5/8	3/8	1-21/32	1.1
1VP34	1	3.15	1	11/16	13/16	1/2	1-7/8	1.4
1VP40	1	3.75	1-1/16	11/16	7/8	1/2	1-7/8	1.9
1VP44	1	4.15	1-1/16	11/16	7/8	1/2	1-7/8	2.4
1VP44	2	4.15	1-1/8	3/4	7/8	1/2	1-7/8	2.9
1VP50	1	4.75	1-1/16	11/16	7/8	1/2	2	2.9
1VP50	2	4.75	1-1/8	3/4	7/8	1/2	1-7/8	3.6
1VP56	1	5.35	1-1/16	11/16	7/8	1/2	1-7/8	3.8
1VP56	2	5.35	1-1/8	3/4	7/8	1/2	1-7/8	4.4
1VP60	2	6.00	1-1/4	7/8	1-1/32	2-1/32	1-21/32	6.5
1VP62	2	5.95	1-1/8	3/4	7/8	1/2	1-29/32	6.1
1VP65	2	6.50	1-1/4	7/8	1-1/32	2-1/32	1-21/32	6.8
1VP68	2	6.55	1-1/8	3/4	7/8	1/2	1-29/32	7.3
1VP71	2	7.10	1-1/4	7/8	1-1/32	2-1/32	1-21/32	8.2
1VP75	2	7.50	1-1/4	7/8	1-1/32	2-1/32	1-21/32	9.2

Part No.	Type	O.D.	F		G		L	Wt. (lbs)
			Max.	Min.	Max.	Min.		
2VP36	4	3.35	2	1-3/8	1-3/16	1/2	3	3.4
2VP42	4	3.95	2-1/8	1-3/8	7/8	1/2	3	4.4
2VP50	5	4.75	2-1/8	1-3/8	7/8	1/2	3	6.3
2VP56	5	5.35	2-1/8	1-3/8	7/8	1/2	3	7.8
2VP60	5	6.00	2-3/8	1-5/8	1-1/32	2-1/32	3-1/4	10.6
2VP62	5	5.95	2-1/8	1-3/8	7/8	1/2	3	10.0
2VP65	5	6.50	2-3/8	1-5/8	1-1/32	2-1/32	3-1/4	12.3
2VP68	5	6.55	2-1/8	1-3/8	7/8	1/2	3	11.7
2VP71	5	7.10	2-3/8	1-5/8	1-1/32	2-1/32	3-1/4	14.6
2VP75	5	7.50	2-3/8	1-5/8	1-1/32	2-1/32	3-1/4	16.5

Part No.	O.D.	F		G		L	Wt. (lbs)
		Max.	Min.	Max.	Min.		
1VL25	2.50	25/32	17/32	5/8	3/8	1-1/2	0.8
1VL30	2.87	25/32	17/32	5/8	3/8	1-1/2	1.0
1VL34	3.15	1	-	7/8	1/2	1-11/16	1.1
1VL40	3.75	1	-	7/8	1/2	1-11/16	1.3
1VL44	4.15	1	-	7/8	1/2	1-11/16	1.3
1VM50	4.75	1-1/16	-	7/8	1/2	1-7/8	2.8

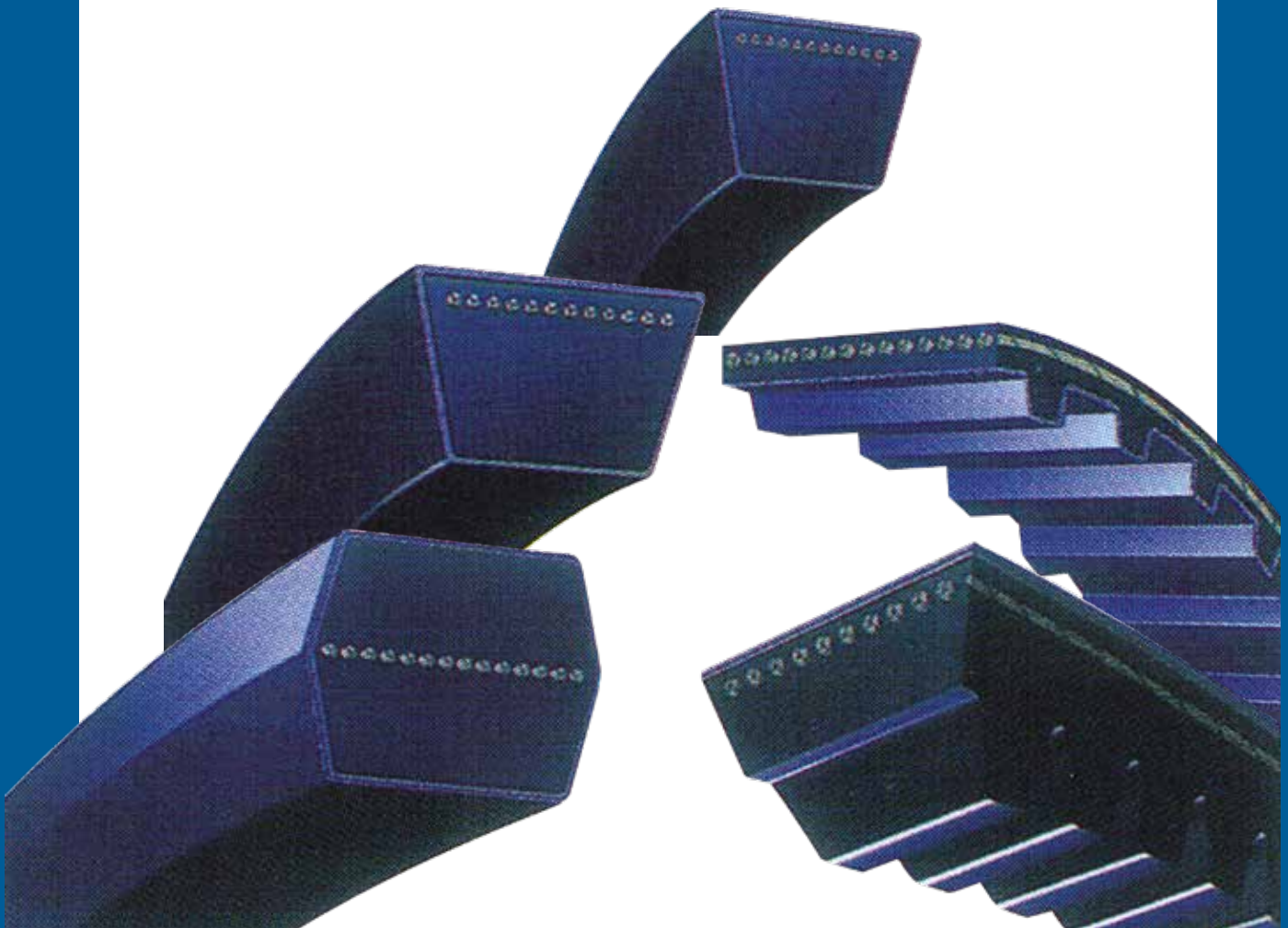


All pictures may differ from the final products. Product availability and specifications are subject to change without notice.



## BELTS

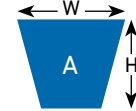
NATIONAL premium power drive belts are designed to withstand the toughest conditions. These belts have been developed using the latest technology to meet the industry's highest standards. The extensive range of NATIONAL belts allow the user to select the appropriate type of belt for any application. Superior Compound Mix along with high strength cords give NATIONAL belts the power to perform when you need it the most. All NATIONAL belts are produced on state of the art machinery to ensure they are perfectly matched. Our belts are manufactured to ISO and RMA standards to enable trouble free replacement. NATIONAL belts are antistatic as well as heat and oil resistant.



## BELTS

### CLASSICAL V-BELTS

Classical belts have an extremely durable rubber impregnated fabric cover for maximum grip on pulley surfaces. High strength polyester cords ensure increased power ratings and high efficiency levels.



A	
	Inch
W	1/2
H	5/16

### A Section

Belt Designation	Inside Length	Outside Length	Datum Length
A19	19	21	20.2
A20	20	22	21.2
A21	21	23	22.2
A22	22	24	23.2
A23	23	25	24.2
A24	24	26	25.2
A25	25	27	26.2
A26	26	28	27.2
A27	27	29	28.2
A28	28	30	29.2
A29	29	31	30.2
A30	30	32	31.2
A31	31	33	32.2
A32	32	34	33.2
A33	33	35	34.2
A34	34	36	35.2
A35	35	37	36.2
A36	36	38	37.2
A37	37	39	38.2
A38	38	40	39.2
A39	39	41	40.2
A40	40	42	41.2
A41	41	43	42.2
A42	42	44	43.1
A43	43	45	44.1
A44	44	46	45.1
A45	45	47	46.1
A46	46	48	47.1
A47	47	49	48.1
A48	48	50	49.1
A49	49	51	50.1
A50	50	52	51.1
A51	51	53	52.1
A52	52	54	53.1
A53	53	55	54.1
A54	54	56	55.1
A55	55	57	56.1
A56	56	58	57.1
A57	57	59	58.1
A58	58	60	59.1
A59	59	61	60.1
A60	60	62	61.1
A61	61	63	62.1
A62	62	64	63.1

All dimensions are in inches.

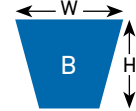
Belt Designation	Inside Length	Outside Length	Datum Length
A63	63	65	64.1
A64	64	66	65.1
A65	65	67	66.1
A66	66	68	67.1
A67	67	69	68.1
A68	68	70	69.1
A69	69	71	70.1
A70	70	72	71.1
A71	71	73	72.1
A73	73	75	74.1
A74	74	76	75.1
A75	75	77	76.1
A76	76	78	77.1
A77	77	79	78.1
A78	78	80	79.1
A79	79	81	80.1
A80	80	82	81.1
A81	81	83	82.1
A82	82	84	83.1
A84	84	86	85.1
A85	85	87	86.1
A86	86	88	87.1
A90	90	92	91.1
A92	92	94	93.1
A93	93	95	94.1
A94	94	96	95.1
A95	95	97	96.1
A96	96	98	97.1
A98	98	100	99.1
A99	99	101	100.1
A100	100	102	101.1
A101	101	103	102.1
A105	105	107	106.1
A108	108	110	109.1
A112	112	114	113.1
A116	116	118	117.1
A120	120	122	121.1
A124	124	126	125.1
A128	128	130	129.1
A136	136	138	137.1
A140	140	142	141.1
A144	144	146	145.1
A162	162	164	163.1

All dimensions are in inches.

# BELTS

## CLASSICAL V-BELTS

Classical belts have an extremely durable rubber impregnated fabric cover for maximum grip on pulley surfaces. High strength polyester cords ensure increased power ratings and high efficiency levels.



B	
W	Inch
H	21/32
	13/32

### B Section

Belt Designation	Inside Length	Outside Length	Datum Length
B25	25	27.7	27
B26	26	28.7	28
B27	27	29.7	29
B28	28	30.7	30
B29	29	31.7	31
B30	30	32.7	32
B31	31	33.7	33
B32	32	34.7	34
B33	33	35.7	35
B34	34	36.7	36
B35	35	37.7	37
B36	36	38.7	38
B37	37	39.7	39
B38	38	40.7	40
B39	39	41.7	41
B40	40	42.7	42
B41	41	43.7	43
B42	42	44.7	44
B43	43	45.7	45
B44	44	46.7	46
B45	45	47.7	47
B46	46	48.7	48
B47	47	49.7	49
B48	48	50.7	50
B49	49	51.7	51
B50	50	52.7	52
B51	51	53.7	53
B52	52	54.7	54
B53	53	55.7	55
B54	54	56.7	56
B55	55	57.7	57
B56	56	58.7	58
B57	57	59.7	59
B58	58	60.7	60
B59	59	61.7	61
B60	60	62.7	62
B61	61	63.7	63
B62	62	64.7	64
B63	63	65.7	65
B64	64	66.7	66
B65	65	67.7	67
B66	66	68.7	68
B67	67	69.7	69
B68	68	70.7	70
B69	69	71.7	71
B70	70	72.7	72
B71	71	73.7	73
B72	72	74.7	74
B73	73	75.7	75
B74	74	76.7	76
B75	75	77.7	77
B76	76	78.7	78
B77	77	79.7	79
B78	78	80.7	80
B79	79	81.7	81
B80	80	82.7	82
B81	81	83.7	83
B82	82	84.7	84
B83	83	85.7	85
B84	84	86.7	86
B85	85	87.7	87
B86	86	88.7	88

All dimensions are in inches.

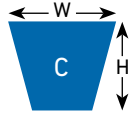
Belt Designation	Inside Length	Outside Length	Datum Length
B87	87	89.7	89
B88	88	90.7	90
B89	89	91.7	91
B90	90	92.7	92
B91	91	93.7	93
B92	92	94.7	94
B93	93	95.7	95
B94	94	96.7	96
B95	95	97.7	97
B96	96	98.7	98
B97	97	99.7	99
B98	98	100.7	100
B99	99	101.7	101
B100	100	102.7	102
B101	101	103.7	103
B102	102	104.7	104
B103	103	105.7	105
B104	104	106.7	106
B105	105	107.7	107
B106	106	108.7	108
B107	107	109.7	109
B108	108	110.7	110
B109	109	111.7	111
B110	110	112.7	112
B112	112	114.7	114
B113	113	115.7	115
B114	114	116.7	116
B115	115	117.7	117
B116	116	118.7	118
B118	118	120.7	120
B120	120	122.7	122
B122	122	124.7	124
B124	124	126.7	126
B126	126	128.7	128
B128	128	130.7	130
B130	130	132.7	132
B136	136	138.7	138
B138	138	140.7	140
B140	140	142.7	142
B142	142	144.7	144
B144	144	146.7	146
B148	148	150.7	150
B150	150	152.7	152
B156	156	158.7	158
B158	158	160.7	160
B160	160	162.7	162
B162	162	164.7	164
B165	165	167.7	167
B173	173	175.7	175
B175	175	177.7	177
B180	180	182.7	182
B185	185	187.7	187
B195	195	197.7	197
B210	210	212.7	212
B225	225	227.7	227
B236	236	238.7	238
B240	240	242.7	242
B248	248	250.7	250
B270	270	272.7	272
B285	285	287.7	287
B300	300	302.7	302
B315	315	317.7	317

All dimensions are in inches.

All pictures may differ from the final products. Product availability and specifications are subject to change without notice.

## BELTS

### CLASSICAL V-BELTS

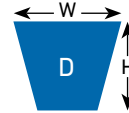
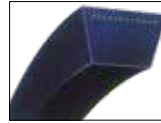


C	
	Inch
W	7/8
H	17/32

#### C Section

Belt Designation	Inside Length	Outside Length	Datum Length
C54	54	57.5	56.1
C60	60	63.5	62.1
C65	65	68.5	67.1
C70	70	73.5	72.1
C72	72	75.5	74.1
C74	74	77.5	76.1
C75	75	78.5	77.1
C81	81	84.5	83.1
C82	82	85.5	84.1
C84	84	87.5	86.1
C85	85	88.5	87.1
C88	88	91.5	90.1
C90	90	93.5	92.1
C92	92	95.5	94.1
C94	94	97.5	96.1
C96	96	99.5	98.1
C98	98	101.5	100.1
C100	100	103.5	102.1
C105	105	108.5	107.1
C106	106	109.5	108.1
C108	108	111.5	110.1
C110	110	113.5	112.1
C111	111	114.5	113.1
C112	112	115.5	114.1
C114	114	117.5	116.1
C115	115	118.5	117.1
C118	118	121.5	120.1
C120	120	123.5	122.1
C124	124	127.5	126.1
C126	126	129.5	128.1
C128	128	131.5	130.1
C130	130	133.5	132.1
C134	134	137.5	136.1
C136	136	139.5	138.1
C138	138	141.5	140.1
C142	142	145.5	144.1
C144	144	147.5	146.1
C154	154	157.5	156.1
C156	156	159.5	158.1
C158	158	161.5	160.1
C160	160	163.5	162.1
C162	162	165.5	164.1
C173	173	176.5	175.1
C177	177	180.5	179.1
C180	180	183.5	182.1
C195	195	198.5	197.1
C197	197	200.5	199.1
C210	210	213.5	212.1
C225	225	228.5	227.1
C240	240	243.5	242.1
C255	255	258.5	257.1
C270	270	273.5	272.1
C300	300	303.5	302.1

All dimensions are in inches.

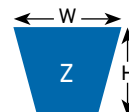


D	
	Inch
W	1-1/4
H	3/4

#### D Section

Belt Designation	Inside Length	Outside Length	Datum Length
D128	128	133	131
D144	144	149	147
D158	158	163	161
D210	210	215	213
D270	270	275	273
D390	390	395	393

All dimensions are in inches.



Z	
	mm
W	10
H	6

#### Z Section

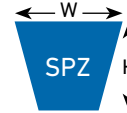
Belt Designation	Inside Length	Outside Length	Datum Length
Z19	19	20.5	19.9
Z20	20	21.5	20.9
Z25	25	26.5	25.9

All dimensions are in mm.

# BELTS

## WEDGE BELTS

Wedge belts have higher power ratings than Classical belts due to improved innovative cord construction and compact belt design. These belts are designed to operate in a wide variety of industrial applications.



SPZ	
	mm
W	9.7
H	8

### SPZ Section

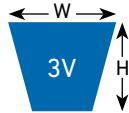
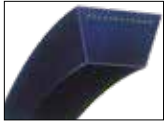
Belt Designation	Datum Length	Inside Length	Outside Length
SPZ612	24.1	22.6	24.6
SPZ710	28.0	26.5	28.5
SPZ722	28.4	26.9	28.9
SPZ737	29.0	27.5	29.5
SPZ787	31.0	29.5	31.5
SPZ812	32.0	30.5	32.5
SPZ850	33.5	32.0	34.0
SPZ862	33.9	32.4	34.4
SPZ950	37.4	35.9	37.9
SPZ962	37.9	36.4	38.4
SPZ1762	69.4	67.9	69.9
SPZ1837	72.3	70.8	72.8
SPZ1862	73.3	71.8	73.8
SPZ2000	78.7	77.2	79.2
SPZ2120	83.5	82.0	84.0
SPZ2160	85.0	83.5	85.5
SPZ2240	88.2	86.7	88.7
SPZ2360	92.9	91.4	93.4

All dimensions are in mm.

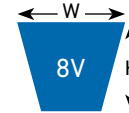
## BELTS

### NARROW WEDGE BELTS

Narrow Wedge belts are manufactured to RMA standards. These belts have higher ratings than Classical belts and have similar characteristics and ratings to Wedge belts for use in heavy duty applications.



3V	
	Inch
W	3/8
H	5/16



8V	
	Inch
W	1
H	29/32

#### 3V Section

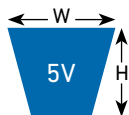
Belt Designation	Outside Length	Inside Length	Datum Length
3V300	30.0	28.0	29.5
3V335	33.5	31.5	33.0
3V355	35.5	33.5	35.0
3V375	37.5	35.5	37.0
3V400	40.0	38.0	39.5
3V425	42.5	40.5	42.0
3V450	45.0	43.0	44.5
3V475	47.5	45.5	47.0
3V500	50.0	48.0	49.5
3V530	53.0	51.0	52.5
3V560	56.0	54.0	55.5
3V630	63.0	61.0	62.5
3V670	67.0	65.0	66.5
3V710	71.0	69.0	70.5
3V750	75.0	73.0	74.5
3V800	80.0	78.0	79.5
3V850	85.0	83.0	84.5
3V900	90.0	88.0	89.5
3V1120	112.0	110.0	111.5

All dimensions are in inches.

#### 8V Section

Belt Designation	Outside Length	Inside Length	Datum Length
8V1120	112.0	106.2	109.9
8V1180	118.0	112.2	115.9
8V1400	140.0	134.2	137.9
8V1600	160.0	154.2	157.9
8V1700	170.0	164.2	167.9
8V1800	180.0	174.1	177.9
8V2240	224.0	218.1	221.9
8V2800	280.0	274.0	277.9

All dimensions are in inches.



5V	
	Inch
W	5/8
H	17/32

#### 5V Section

Belt Designation	Outside Length	Inside Length	Datum Length
5V630	63.0	59.7	62.0
5V710	71.0	67.7	70.0
5V750	75.0	71.7	74.0
5V800	80.0	76.7	79.0
5V850	85.0	81.7	84.0
5V950	95.0	91.7	94.0
5V1000	100.0	96.7	99.0
5V1060	106.0	102.7	105.0
5V1120	112.0	108.7	111.0
5V1180	118.0	114.7	117.0
5V1250	125.0	121.7	124.0
5V1320	132.0	128.7	131.0
5V1400	140.0	136.7	139.0
5V1500	150.0	146.6	149.0
5V1600	160.0	156.6	159.0
5V1700	170.0	166.6	169.0
5V1800	180.0	176.6	179.0
5V1900	190.0	186.6	189.0
5V2120	212.0	208.6	211.0
5V2360	236.0	232.6	235.0

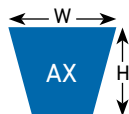
All dimensions are in inches.

All pictures may differ from the final products. Product availability and specifications are subject to change without notice.

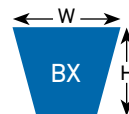
# BELTS

## COGGED RAW EDGE CLASSICAL V-BELTS

Cogged Raw Edge Classical V-belts are dimensionally the same as Classical belts but have higher power ratings. These belts can also be used on pulleys with smaller diameters due to the cog design.



AX	
	Inch
W	1/2
H	5/16



BX	
	Inch
W	21/32
H	13/32

### AX Section

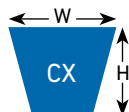
Belt Designation	Inside Length	Outside Length	Datum Length
AX24	24.0	26.0	25.2
AX30	30.0	32.0	31.2
AX31	31.0	33.0	32.2
AX33	33.0	35.0	34.2
AX36	36.0	38.0	37.2
AX38	38.0	40.0	39.2
AX42	42.0	44.0	43.2
AX46	46.0	48.0	47.2
AX48	48.0	50.0	49.2
AX51	51.0	53.0	52.2
AX53	53.0	55.0	54.2
AX55	55.0	57.0	56.2

All dimensions are in inches.

### BX Section

Belt Designation	Inside Length	Outside Length	Datum Length
BX31	31.0	33.7	32.7
BX33	33.0	35.7	34.7
BX35	35.0	37.7	36.7
BX37	37.0	39.7	38.7
BX38	38.0	40.7	39.7
BX39	39.0	41.7	40.7
BX40	40.0	42.7	41.7
BX41	41.0	43.7	42.7
BX42	42.0	44.7	43.7
BX43	43.0	45.7	44.7
BX44	44.0	46.7	45.7
BX45	45.0	47.7	46.7
BX46	46.0	48.7	47.7
BX47	47.0	49.7	48.7
BX48	48.0	50.7	49.7
BX49	49.0	51.7	50.7
BX50	50.0	52.7	51.7
BX51	51.0	53.7	52.7
BX52	52.0	54.7	53.7
BX54	54.0	56.7	55.7
BX55	55.0	57.7	56.7
BX56	56.0	58.7	57.7
BX58	58.0	60.7	59.7
BX59	59.0	61.7	60.7
BX60	60.0	62.7	61.7
BX61	61.0	63.7	62.7
BX62	62.0	64.7	63.7
BX63	63.0	65.7	64.7
BX64	64.0	66.7	65.7
BX66	66.0	68.7	67.7
BX67	67.0	69.7	68.7
BX68	68.0	70.7	69.7
BX69	69.0	71.7	70.7
BX70	70.0	72.7	71.7
BX71	71.0	73.7	72.7
BX73	73.0	75.7	74.7
BX75	75.0	77.7	76.7
BX78	78.0	80.7	79.7
BX81	81.0	83.7	82.7
BX83	83.0	85.7	84.7
BX85	85.0	87.7	86.7
BX90	90.0	92.7	91.7
BX92	92.0	94.7	93.7
BX95	95.0	97.7	96.7
BX100	100.0	102.7	101.7
BX103	103.0	105.7	104.7
BX105	105.0	107.7	106.7

All dimensions are in inches.



CX	
	Inch
W	7/8
H	17/32

### CX Section

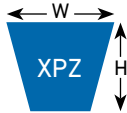
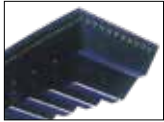
Belt Designation	Inside Length	Outside Length	Datum Length
CX60	60.0	63.5	62.1
CX90	90.0	93.5	92.1
CX105	105.0	108.5	107.1
CX120	120.0	123.5	122.1

All dimensions are in inches.

## BELTS

### COGGED RAW EDGE WEDGE BELTS

Cogged Raw Edge Wedge belts are dimensionally the same as Wedge belts but have higher power ratings. These belts can also be used on pulleys with smaller diameters due to the cog design.



XPZ	
	mm
W	10
H	8

#### XPZ Section

Belt Designation	Datum Length	Inside Length	Outside Length
XPZ950	37.4	35.9	37.9
XPZ987	38.9	37.4	39.4
XPZ1060	41.7	40.2	42.2
XPZ1120	44.1	42.6	44.6

All dimensions are in mm.

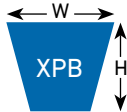


XPA	
	mm
W	13
H	10

#### XPA Section

Belt Designation	Datum Length	Inside Length	Outside Length
XPA1400	55.1	53.3	55.8

All dimensions are in mm.



XPB	
	mm
W	16.3
H	13

#### XPB Section

Belt Designation	Datum Length	Inside Length	Outside Length
XPB1800	70.9	68.5	71.7
XPB2000	78.7	76.4	79.6
XPB3150	124.0	-	-

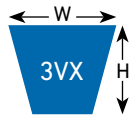
All dimensions are in mm.



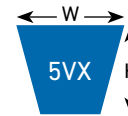
# BELTS

## COGGED RAW EDGE NARROW WEDGE BELTS

Cogged Raw Edge Narrow Wedge belts are dimensionally the same as Narrow Wedge belts but have higher power ratings. These belts can also be used on pulleys with smaller diameters due to the cog design.



3VX	
	Inch
W	3/8
H	5/16



5VX	
	Inch
W	5/8
H	17/32

### 3VX Section

Belt Designation	Outside Length	Inside Length	Datum Length
3VX355	35.5	33.5	35.0
3VX375	37.5	35.5	37.0
3VX400	40.0	38.0	39.5
3VX425	42.5	40.5	42.0
3VX450	45.0	43.0	44.5
3VX475	47.5	45.5	47.0
3VX500	50.0	48.0	49.5
3VX530	53.0	51.0	52.5
3VX560	56.0	54.0	55.5
3VX600	60.0	58.0	59.5
3VX630	63.0	61.0	62.5
3VX670	67.0	65.0	66.5
3VX710	71.0	69.0	70.5
3VX750	75.0	73.0	74.5
3VX800	80.0	78.0	79.5
3VX850	85.0	83.0	84.5
3VX900	90.0	88.0	89.5
3VX950	95.0	93.0	94.5
3VX1000	100.0	98.0	99.5
3VX1060	106.0	104.0	105.5
3VX1120	112.0	110.0	111.5

All dimensions are in inches.

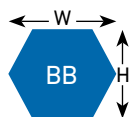
### 5VX Section

Belt Designation	Outside Length	Inside Length	Datum Length
5VX500	50.0	49.8	49.0
5VX560	56.0	55.8	55.0
5VX600	60.0	59.8	59.0
5VX630	63.0	62.8	62.0
5VX670	67.0	66.8	66.0
5VX710	71.0	70.8	70.0
5VX750	75.0	74.8	74.0
5VX800	80.0	79.8	79.0
5VX850	85.0	84.8	84.0
5VX900	90.0	89.8	89.0
5VX1000	100.0	99.8	99.0
5VX1060	106.0	105.8	105.0
5VX1120	112.0	111.8	111.0
5VX1180	118.0	117.8	117.0
5VX1250	125.0	124.8	124.0
5VX1320	132.0	131.8	131.0
5VX1400	140.0	139.8	139.0
5VX1500	150.0	149.8	149.0
5VX1600	160.0	159.8	159.0
5VX1700	170.0	169.8	169.0
5VX1800	180.0	179.8	179.0
5VX1900	190.0	189.8	189.0

All dimensions are in inches.

## DOUBLE CLASSICAL BELTS

Double Section Classical belts are used for multiple shaft drives with shafts operating in the same or opposite directions.



BB	
	Inch
W	21/32
H	17/32

### BB Section

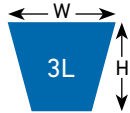
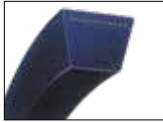
Belt Designation	Inside Length	Outside Length	Datum Length
BB112	112.0	115.2	110.6
BB144	144.0	147.2	145.6
BB155	155.0	158.2	156.6

All dimensions are in inches.

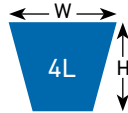
## BELTS

### FRACTIONAL HORSEPOWER BELTS

Fractional Horsepower belts are smaller section V-belts used to operate drives with lower horsepower. They are used in many types of electrical appliances and garden equipment.



3L	
Inch	
W	3/8
H	7/32



4L	
Inch	
W	1/2
H	5/16



5L	
Inch	
W	21/32
H	3/8

#### 3L Section

Belt Designation	Outside Length	Inside Length
3L140	14.0	13.3
3L150	15.0	14.3
3L160	16.0	15.3
3L170	17.0	16.3
3L180	18.0	17.3
3L190	19.0	18.3
3L200	20.0	19.3
3L210	21.0	20.3
3L220	22.0	21.3
3L230	23.0	22.3
3L240	24.0	23.3
3L250	25.0	24.3
3L260	26.0	25.3
3L270	27.0	26.3
3L280	28.0	27.3
3L290	29.0	28.3
3L300	30.0	29.3
3L310	31.0	30.3
3L320	32.0	31.3
3L330	33.0	32.3
3L340	34.0	33.3
3L350	35.0	34.3
3L360	36.0	35.3
3L370	37.0	36.3
3L380	38.0	37.3
3L390	39.0	38.3
3L400	40.0	39.3
3L410	41.0	40.3
3L420	42.0	41.3
3L450	45.0	44.3
3L460	46.0	45.3
3L470	47.0	46.3
3L480	48.0	47.3
3L500	50.0	49.3
3L510	51.0	50.3
3L520	52.0	51.3
3L530	53.0	52.3
3L550	55.0	54.3
3L600	60.0	59.3
3L620	62.0	61.3
3L680	68.0	67.3
3L750	75.0	74.3

All dimensions are in inches.

#### 4L Section

Belt Designation	Outside Length	Inside Length
4L160	16.0	15.0
4L170	17.0	16.0
4L180	18.0	17.0
4L190	19.0	18.0
4L200	20.0	19.0
4L210	21.0	20.0
4L220	22.0	21.0
4L230	23.0	22.0
4L240	24.0	23.0
4L250	25.0	24.0
4L260	26.0	25.0
4L270	27.0	26.0
4L280	28.0	27.0
4L290	29.0	28.0
4L300	30.0	29.0
4L310	31.0	30.0
4L315	31.5	30.5
4L320	32.0	31.0
4L330	33.0	32.0
4L340	34.0	33.0
4L350	35.0	34.0
4L360	36.0	35.0
4L370	37.0	36.0
4L380	38.0	37.0
4L390	39.0	38.0
4L400	40.0	39.0
4L410	41.0	40.0
4L420	42.0	41.0
4L430	43.0	42.0
4L440	44.0	43.0
4L450	45.0	44.0
4L460	46.0	45.0
4L470	47.0	46.0
4L480	48.0	47.0
4L490	49.0	48.0
4L500	50.0	49.0
4L510	51.0	50.0
4L520	52.0	51.0
4L530	53.0	52.0
4L540	54.0	53.0
4L550	55.0	54.0
4L560	56.0	55.0
4L590	59.0	58.0
4L600	60.0	59.0
4L610	61.0	60.0
4L620	62.0	61.0
4L640	64.0	63.0
4L660	66.0	65.0
4L670	67.0	66.0
4L700	70.0	69.0
4L710	71.0	70.0
4L740	74.0	73.0
4L770	77.0	76.0
4L790	79.0	78.0
4L820	82.0	81.0

All dimensions are in inches.

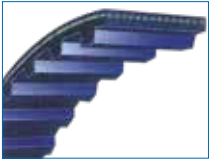
#### 5L Section

Belt Designation	Outside Length	Inside Length
5L230	23.0	21.8
5L250	25.0	23.8
5L300	30.0	28.8
5L320	32.0	30.8
5L340	34.0	32.8
5L350	35.0	33.8
5L360	36.0	34.8
5L370	37.0	35.8
5L390	39.0	37.8
5L420	42.0	40.8
5L450	45.0	43.8
5L470	47.0	45.8
5L510	51.0	49.8
5L520	52.0	50.8
5L560	56.0	54.8
5L640	64.0	62.8
5L650	65.0	63.8
5L710	71.0	69.8
5L730	73.0	71.8

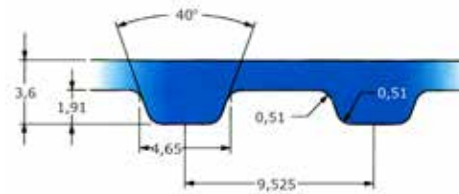
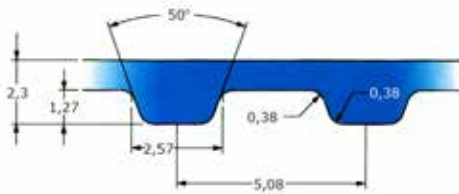
All dimensions are in inches.

# BELTS

## CLASSICAL TIMING BELTS



Classical Timing belts are used in light and medium duty applications. The constant meshing of the belt and pulley teeth allows the exact position of the drive shaft to be determined.



### XL Section

Belt Designation	No. of Teeth	Pitch Length
80XL037	40	8.0
90XL037	45	9.0
100XL037	50	10.0
110XL037	55	11.0
120XL037	60	12.0
130XL031	65	13.0
130XL037	65	13.0
136XL037	68	13.6
140XL037	70	14.0
150XL037	75	15.0
160XL037	80	16.0
170XL037	85	17.0
180XL037	90	18.0
190XL037	95	19.0
200XL037	100	20.0
210XL037	105	21.0
220XL025	110	22.0
220XL037	110	22.0
230XL037	115	23.0
240XL037	120	24.0
270XL037	135	27.0
300XL037	150	30.0
630XL037	315	63.0

All dimensions are in mm.

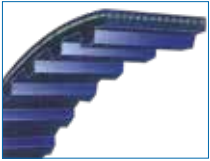
### L Section

Belt Designation	No. of Teeth	Pitch Length
124L050	33	12.4
124L075	33	12.4
150L050	40	15.0
150L075	40	15.0
165L050	44	16.5
173L075	46	17.3
187L050	50	18.7
187L075	50	18.7
187L100	50	18.7
210L050	56	21.0
210L075	56	21.0
225L050	60	22.5
225L075	60	22.5
225L100	60	22.5
240L050	64	24.0
240L075	64	24.0
240L100	64	24.0
255L050	68	25.5
255L075	68	25.5
270L100	72	27.0
285L050	76	28.5
285L075	76	28.5
285L100	76	28.5
300L050	80	30.0
300L075	80	30.0
300L100	80	30.0
320L050	85	32.0
322L050	86	32.2
345L050	92	34.5
345L075	92	34.5
345L100	92	34.5
367L050	98	36.7
390L075	104	39.0
390L100	104	39.0
450L050	120	45.0
480L100	128	48.0
510L100	136	51.0
540L100	144	54.0
600L050	160	60.0
600L100	160	60.0
728L100	194	72.8
915L100	244	91.5

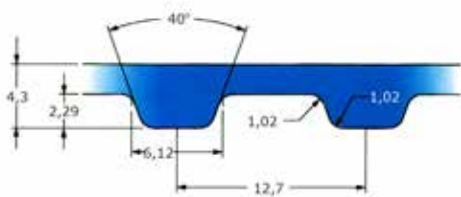
All dimensions are in mm.

## BELTS

### CLASSICAL TIMING BELTS



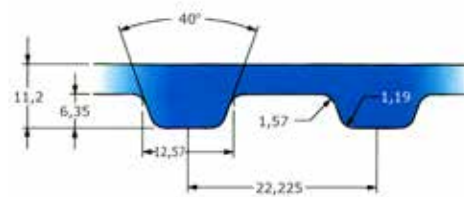
Classical Timing belts are used in light and medium duty applications. The constant meshing of the belt and pulley teeth allows the exact position of the drive shaft to be determined.



#### H Section

Belt Designation	No. of Teeth	Pitch Length
220H100	44	22.0
240H100	48	24.0
255H100	51	25.5
300H100	60	30.0
300H150	60	30.0
300H200	60	30.0
330H100	66	33.0
330H150	66	33.0
350H100	70	35.0
360H100	72	36.0
390H100	78	39.0
390H200	78	39.0
400H100	80	40.0
400H150	80	40.0
410H150	82	41.0
420H100	84	42.0
420H150	84	42.0
420H200	84	42.0
450H100	90	45.0
450H150	90	45.0
480H100	98	48.0
480H150	98	48.0
510H100	102	51.0
540H100	108	54.0
540H150	108	54.0
560H100	112	56.0
600H100	120	60.0
630H100	126	63.0
700H200	140	70.0
800H150	160	80.0
1000H100	200	100.0
1100H100	220	110.0
1250H100	250	125.0
1700H100	340	170.0

All dimensions are in mm.



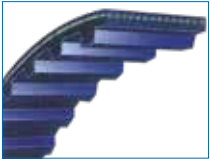
#### XH Section

Belt Designation	No. of Teeth	Pitch Length
700XH200	80	70.0

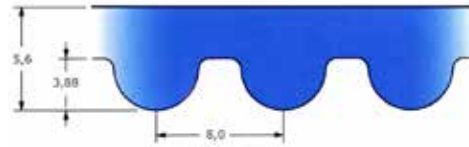
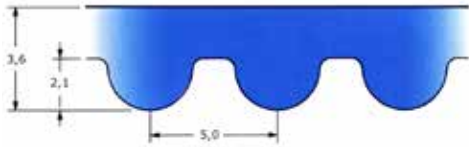
All dimensions are in mm.

# BELTS

## HiTD BELTS



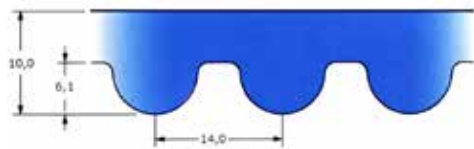
HiTD belts have curvilinear teeth which distribute the stress loads of a drive more evenly. The unique tooth profile allows for more contact area of the tooth in the sprocket which provides greater driving power for high strength drives.



### 5M Section

Belt Designation	No. of Teeth	Pitch Length
400-5M-15	80	15.7
425-5M-15	85	16.7
450-5M-15	90	17.7
475-5M-15	95	18.7
500-5M-15	100	19.7
520-5M-15	104	20.5
535-5M-15	107	21.1
670-5M-15	134	26.4
670-5M-25	134	26.4
740-5M-15	148	29.1
800-5M-25	160	31.5
1000-5M-25	200	39.4

All dimensions are in mm.



### 14M Section

Belt Designation	No. of Teeth	Pitch Length
966-14M-40	69	38.0
966-14M-85	69	38.0
1400-14M-85	100	55.1
1610-14M-40	115	63.4
1610-14M-85	115	63.4
2450-14M-55	175	96.5
2590-14M-55	185	102.0
3150-14M-40	225	124.0
3150-14M-55	225	124.0
3360-14M-55	240	132.3
3500-14M-115	250	137.8

All dimensions are in mm.

### 8M Section

Belt Designation	No. of Teeth	Pitch Length
480-8M-20	60	18.9
480-8M-30	60	18.9
600-8M-20	75	23.6
640-8M-20	80	25.2
640-8M-30	80	25.2
680-8M-30	85	26.8
720-8M-20	90	28.3
720-8M-30	90	28.3
760-8M-30	95	29.9
800-8M-20	100	31.5
800-8M-30	100	31.5
880-8M-20	110	34.6
880-8M-30	110	34.6
880-8M-50	110	34.6
960-8M-20	120	37.8
960-8M-30	120	37.8
1040-8M-20	130	40.9
1040-8M-30	130	40.9
1120-8M-50	140	44.1
1280-8M-30	160	50.4
1280-8M-50	160	50.4
1440-8M-20	180	56.7
1440-8M-30	180	56.7
1440-8M-50	180	56.7
1600-8M-30	200	63.0
1600-8M-50	200	63.0
1760-8M-30	220	69.3
1800-8M-30	225	70.9

All dimensions are in mm.

All pictures may differ from the final products. Product availability and specifications are subject to change without notice.

## BELTS

### INSTALLATION PROCEDURE FOR V-BELTS

#### 1) Check Pulleys:

Before installing, it is important to inspect the pulleys for wear on the contact surfaces and also to remove any rust or dirt. Use a pulley gauge to check the pulley groove to see if there is any wear on the side walls. Worn out pulleys must be replaced to ensure good contact between the pulley and the belt. Worn out pulleys, if not replaced, may lead to the following problems:

- Reduced belt life;
- Slippage of belt;
- Reduced power transmission of the drive;
- Vibrations, especially when the sides of the pulleys are broken;
- When installing a new pulley, always check the surface finish of the groove. When the surface of the pulley groove is rough, it will wear the belt surface down quickly.

#### 2) Check Shaft and Keys:

Always check the shaft before installing a pulley to make sure that the shaft is not worn. Improper shaft fits lead to vibration during initial running of the drive, which leads to further wearing and eventually drive failure. It is advisable to make sure that the key fits properly in the keyways and holds the pulley in place.

#### 3) Check Alignment:

Always make sure that the pulleys are aligned properly as this has a dramatic effect on belt wear and how efficiently the drive will run. Use of a straight ruler against the pulley walls or laser alignment equipment provide easy and accurate methods of alignment.

#### 4) Always Use New Complete Belt Sets:

Whenever one or more belts in a drive need to be replaced, it is recommended that **all belts** in the drive be replaced and that belts of the same brand be used. All National belts are uniformly matched. Do not mix brands. If only the worn or broken belts are replaced, the new belts will have different tension settings than the old belts. This will lead to over-tensioning of the shortest belt (typically the new belts due to stretching of the old ones), a reduction in power transmission, premature belt failure and greater stress on the bearings.

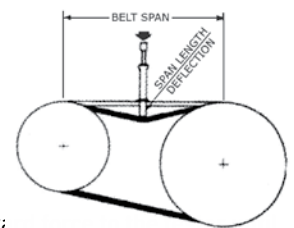
#### 5) Installing Belts:

Never use a lever to install a belt because it may break the tensile cords of the belt. Using a lever can result in the permanent twisting of belts, which leads to the turning of belts in the pulley groove while running. The best way to install the v-belts is to reduce the centre distance of the pulleys so that the belts can be loosely installed.

#### 6) Tensioning

##### TENSION MEASUREMENT PROCEDURE:

1. Measure the belt span from the center of the drive shaft to the center of the driven shaft.
2. The correct deflection measurement is 16mm over every 1000mm.
3. Multiply the centre distance by 16 to get the total deflection distance. Position the lower O-ring on the pen scale at the measured belt span for the required distance.
4. Use Table 1 to select the correct deflection force.
5. Set the small O-ring on the deflection force scale to zero.
6. Place the tension tester squarely on one belt at the center of the belt span (see drawing A). Apply downward force until the bottom of the large O-ring is even with the next belt or with the bottom of a straight edge laid across the belt.
7. Remove the tension tester and read the force applied with the values given in Table 1. The force should be between the minimum and the maximum shown. The maximum value shown is for new belts. This will allow for anticipated tension loss. Used belts should be tensioned above the minimum value as shown in the table.



drawing "A"

# BELTS

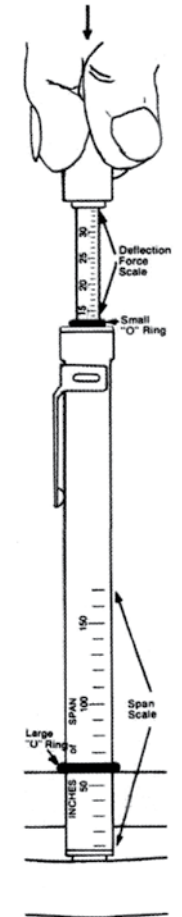
## TENSIONING

TABLE 1

PULLEY DIAMETER IN INCHES / DEFLECTION FORCE IN LBS.

Belt Type	Smallest Pulley Diameter (in.)	RPM	Belt Deflection Force (lbs)			
			Un-Cogged Belts		Cogged Belts	
			Used Belt	New Belt	Used Belt	New Belt
Z, ZX	1.5 - 2.5	1000 - 2500	1.2	1.7	1.3	2.0
		2501 - 4000	1.4	2.1	1.6	2.4
	2.5 - over	1000 - 2500	2.0	2.9	2.2	3.4
		2501 - 4000	2.0	2.9	2.2	3.4
A, AX	3.0 - 3.6	1000 - 2500	3.7	5.5	4.1	6.1
		2501 - 4000	2.8	4.2	3.4	5.0
	3.8 - 4.8	1000 - 2500	4.5	6.8	5.0	7.4
		2501 - 4000	3.8	5.7	4.3	6.4
	5.0 - over	1000 - 2500	5.4	8.0	5.7	8.4
		2501 - 4000	4.7	7.0	5.1	7.6
B, BX	3.4 - 4.2	860 - 2500	--	--	4.9	7.2
		2501 - 4000	--	--	4.2	6.2
	4.4 - 5.6	860 - 2500	5.3	7.9	7.1	10.5
		2501 - 4000	4.5	6.7	6.1	9.1
	5.8 - over	860 - 2500	6.3	9.4	8.5	12.6
		2501 - 4000	6.0	8.9	7.3	10.9
C, CX	7.0 - 9.0	500 - 1740	11.5	17.0	14.7	21.8
		1741 - 3000	9.4	13.8	11.9	17.5
	0.5 - over	500 - 1740	14.1	21.0	15.9	23.5
		1741 - 3000	12.5	18.5	14.6	21.6
D	12.0 - 16.0	200 - 850	24.9	37.0	--	--
		851 - 1500	21.2	31.3	--	--
	18.0 - over	200 - 850	30.4	45.2	--	--
		851 - 1500	25.6	38.0	--	--
SPZ, XPZ	1.5 - 2.5	1000 - 2500	3.8	5.8	4.1	6.1
		2501 - 4000	3.0	4.9	3.4	4.9
	2.5 - 3.0	1000 - 2500	4.3	8.1	4.9	7.4
		2501 - 4000	4.7	7.2	4.7	7.2
	3.0 - over	1000 - 2500	5.4	8.1	5.6	8.5
		2501 - 4000	4.9	7.4	5.3	8.1
SPA, XPA	3.8 - 4.1	1000 - 2500	6.5	9.8	7.4	11.2
		2501 - 4000	5.9	8.7	6.7	10.0
	4.1 - 5.5	1000 - 2500	7.8	11.7	9.0	13.5
		2501 - 4000	7.1	10.6	8.1	12.1
	5.5 - over	1000 - 2500	9.8	14.9	11.2	17.1
		2501 - 4000	9.9	14.8	10.1	15.3
SPB, XPB	3.4 - 4.2	860 - 2500	11.0	16.4	12.6	18.9
		2501 - 4000	10.6	15.9	12.1	18.2
	4.4 - 5.6	860 - 2500	14.2	21.1	16.2	24.3
		2501 - 4000	12.6	18.9	15.0	22.5
	5.8 - over	860 - 2500	16.9	25.2	18.0	27.0
		2501 - 4000	14.4	21.6	16.4	24.7
SPC, XPC	7.0 - 9.0	500 - 1740	22.8	34.1	26.1	39.1
		1741 - 3000	23.0	34.6	26.3	39.7
	9.5 - over	500 - 1740	26.0	38.8	29.7	44.5
		1741 - 3000	30.1	45.0	34.4	51.7
3V, 3VX	2.2 - 2.4	1000 - 2500	--	--	3.3	4.9
		2501 - 4000	--	--	2.9	4.3
	2.65 - 3.65	1000 - 2500	3.6	5.1	4.2	6.2
		2501 - 4000	3.0	4.4	3.8	5.6
	4.12 - over	1000 - 2500	4.9	7.3	5.3	7.9
		2501 - 4000	4.4	6.6	4.9	7.3
5V, 5VX	4.4 - 6.7	1000 - 2500	--	--	9.4	15.2
		2501 - 4000	--	--	6.2	13.2
	7.1 - 10.9	500 - 1740	12.7	18.9	14.8	22.1
		1741 - 3001	11.2	16.7	13.7	20.1
	11.8 - over	500 - 1740	15.5	23.4	17.1	25.5
		1741 - 3001	14.6	21.8	16.8	25.5
8V	12.5 - 17.0	200 - 850	33.0	49.3	--	--
		851 - 1500	26.8	39.9	--	--
	18.0 - over	200 - 850	39.6	59.2	--	--
		851 - 1500	35.3	52.7	--	--

TENSION TESTER



Maintenance



All pictures may differ from the final products. Product availability and specifications are subject to change without notice.





## NATIONAL PRODUCTS LIMITED WARRANTY

**WARRANTY OFFERED BY:** This warranty (the “**Warranty**”) applies to all goods, materials, parts and products sold under the NATIONAL brand name or trademark (“**NATIONAL Products**”) by Wajax Industrial Components Limited Partnership or any of its affiliates or related entities (each a “**Wajax Entity**”); the specific Wajax Entity bound by this Warranty (“**Wajax**”) will be the Wajax Entity which is a party to the relevant contract or order with the customer (“**Customer**”) pursuant to which such NATIONAL Products are sold.

**DEFECTS WARRANTED - NATIONAL PRODUCTS:** Subject to the provisions set out in this Warranty document, Wajax warrants that NATIONAL Products are of good workmanship, free of defects in manufacture and material, and conform to Wajax’s specifications as expressly set out in the relevant contract or purchase order, subject to Wajax’s standard tolerances for specifications. If Wajax determines in its sole discretion that any NATIONAL Product (or part thereof) fails to conform with such warranty during the applicable warranty period, and that the terms and conditions of this Warranty have been fully satisfied, then Wajax (in its sole discretion) shall promptly repair or replace such NATIONAL Product (or part thereof) at Wajax’s expense and deliver the same FCA Wajax facilities, or refund the purchase price thereof. The obligations of Wajax under this Warranty shall be strictly limited to repair or replacement of any NATIONAL Product which in Wajax’s sole opinion is defective at the time of delivery of such NATIONAL Product to the Customer, or refund of the purchase price thereof. This Warranty shall apply only to NATIONAL Products sold by Wajax which have been paid for by the Customer. If Wajax elects to repair the NATIONAL Product subject to the warranty claim, the Customer shall be responsible for the removal and transportation thereof to Wajax’s designated facility, provided that if the Customer requests that the repair be done at the Customer’s site, then the Customer will be responsible for the removal thereof and Wajax will only cover the repair time spent on the site. All other expenses will be borne by the Customer. Any required repair shall be performed during Wajax’s normal business hours and if repair is required outside of normal business hours then overtime rates shall apply and the Customer shall pay Wajax’s cost differential for the same. This Warranty is subject to the limitations, warranty period, exclusions and other terms and conditions set out herein. Wajax shall warrant any repaired or replaced parts until the expiration of the original Warranty period.

**WARRANTY PERIOD:** This Warranty shall be restricted to defects in NATIONAL Products present at the time of delivery thereof to the Customer which become manifest during the period of twelve (12) months after the date of delivery of such NATIONAL Products to the Customer. Such period shall: (i) be as stated herein unless otherwise stated in the contract between Wajax and the Customer; and (ii) not be extended by the performance of any subsequent repairs or other remedial work.

**WARRANTY EXCLUSIONS:** This Warranty shall not cover, and Wajax shall not be liable under this Warranty for any damages, costs or expenses of the Customer or of any third party caused or contributed to in whole or in part by, or any defects caused by or related to:

- Any labour not performed by Wajax or defects or faults occurring or emanating as a result of the same.
- Any event or circumstance which arises through no fault of Wajax including, without limitation, disaster, force majeure, accidents, abuse, neglect, chemical, electro-chemical or electrical influences, any form of overload of any NATIONAL Product or any abnormal physical stress or environmental conditions.
- Any incorrect, improper or inadequate installation, assembly, use, storage, inspection, maintenance, handling, removal or transportation of any NATIONAL Product according to all recommendations and instructions of Wajax regarding the NATIONAL Product, and all standard industry practices.
- Any failure of the Customer to comply with all recommendations and instructions of Wajax regarding any NATIONAL Product including, without limitation, any failure of the Customer to service or maintain the NATIONAL Product or any part or component thereof in accordance with the recommended service/maintenance intervals and procedures specified by Wajax, or any use of fuels, oils, additives or any other consumable of a standard not compatible with any such recommended specifications.
- Any acts or omissions of the Customer including, without limitation, any specifications, instructions or designs specified or provided by or on behalf of the Customer.
- Normal wear and tear, or parts that, owing to their inherent material properties or their specified use, are subject to premature wear.
- Any materials or substances being processed by, or by the entry of materials or substances into, any NATIONAL Products including, without limitation debris, moisture, dust, grease or other contamination.

**WARRANTY INVALIDITY:** The Customer’s failure to observe and perform any of the following shall automatically invalidate this Warranty with respect to a NATIONAL Product:

- The Customer must comply with all requirements set out in this Warranty and any applicable contract or purchase order (and related terms and conditions) with respect to such NATIONAL Product.
- Such NATIONAL Product must be installed, assembled, handled, stored, used, operated, inspected, maintained, removed and transported in a proper and prudent manner in accordance with the recommendations and instructions of Wajax, standard industry practices, and all applicable laws.
- In the event of any incident or event giving rise to, or likely to give rise to, a claim under this Warranty, the Customer must take precautions to prevent further damage to such NATIONAL Product. Wajax shall not be liable for any further damage to such NATIONAL Product until it has been repaired to the satisfaction of Wajax.

This Warranty shall be void if the Customer:

- Has willfully concealed or misrepresented any material fact or circumstance concerning this Warranty or such NATIONAL Product (whether before or after a loss), or in case of any fraud or false statement by the Customer relating thereto.
- Transfers title of such NATIONAL Product to a third party, or lends, leases, rents or otherwise releases possession of same, in any manner whatsoever, or becomes bankrupt or placed in receivership such that such NATIONAL Product is seized or taken by a creditor or a third party claiming rights, title or ownership in such NATIONAL Product.
- Causes or permits any reconstruction, repair, alteration or modification of such NATIONAL Product to be made by any person not authorized by Wajax, or if any parts or components not supplied by Wajax are used in connection with any of the foregoing.

**NOTICE OF WARRANTY CLAIMS:** To be effective, a claim under this Warranty must be: (i) made in writing during the applicable warranty period; (ii) sent to Wajax at the Wajax branch where the NATIONAL Product was purchased; and (iii) received by Wajax within ten (10) days of the Customer’s discovery of the defect.

**ADDITIONAL LIMITATIONS:** No suit or action on this Warranty for the recovery of any claim may be sustained in any court of law or equity unless the Customer has complied with all the requirements of this Warranty and unless such suit or action is commenced within three (3) months from the date on which the Customer originally made such claim under this Warranty.

WAJAX’S TOTAL LIABILITY UNDER THIS WARRANTY WITH RESPECT TO ANY NATIONAL PRODUCT, WHETHER THROUGH REPAIR OR REPLACEMENT OF THE NATIONAL PRODUCT OR REFUND OF THE PURCHASE PRICE THEREOF, IS LIMITED TO THE AMOUNT OF THE PURCHASE PRICE ACTUALLY RECEIVED BY WAJAX FROM THE CUSTOMER FOR THE DEFECTIVE NATIONAL PRODUCT. Except for the repair, replacement or refund obligation as expressly provided herein, Wajax shall not be liable for any damages, losses, costs or expenses suffered by the Customer or any other third party of any nature or kind including, without limitation, any direct, indirect, consequential or incidental damages or loss of any kind for any reason, including down-time, loss of revenue or profits, loss of production, loss or diminution of value of property, loss of use of property or facilities, loss of economic opportunity or loss of life or injury by the Customer or any other party whether or not caused by the defective NATIONAL Product or the removal thereof. The remedies set out herein are the Customer’s sole remedies, and are Wajax’s only obligations (whether based on breach of contract, warranty, indemnity or statutory duty or in tort or otherwise), arising out of or in connection with defective or deficient NATIONAL Products.

The Warranty set out herein is the only warranty applicable to the NATIONAL Products. WAJAX EXPRESSLY DISCLAIMS, TO THE MAXIMUM EXTENT PERMITTED BY APPLICABLE LAWS, ANY AND ALL OTHER REPRESENTATIONS, WARRANTIES, COVENANTS, CONDITIONS, GUARANTEES OR SIMILAR OBLIGATIONS, WHETHER EXPRESS OR IMPLIED BY FACT, BY LAW (INCLUDING ANY STATUTE OR REGULATION), BY CUSTOM OR TRADE USAGE OR BY ANY COURSE OF DEALING, INCLUDING, WITHOUT LIMITATION, ANY IMPLIED WARRANTIES OF QUALITY, MERCHANTABILITY, FITNESS FOR PURPOSE AND FITNESS FOR A PARTICULAR PURPOSE, NON-INFRINGEMENT OR OTHERWISE, ALL OF WHICH ARE EXCLUDED AND ARE INAPPLICABLE.

**GOVERNING LAW:** This Warranty is governed by the laws of the Province of Ontario.

# NATIONAL

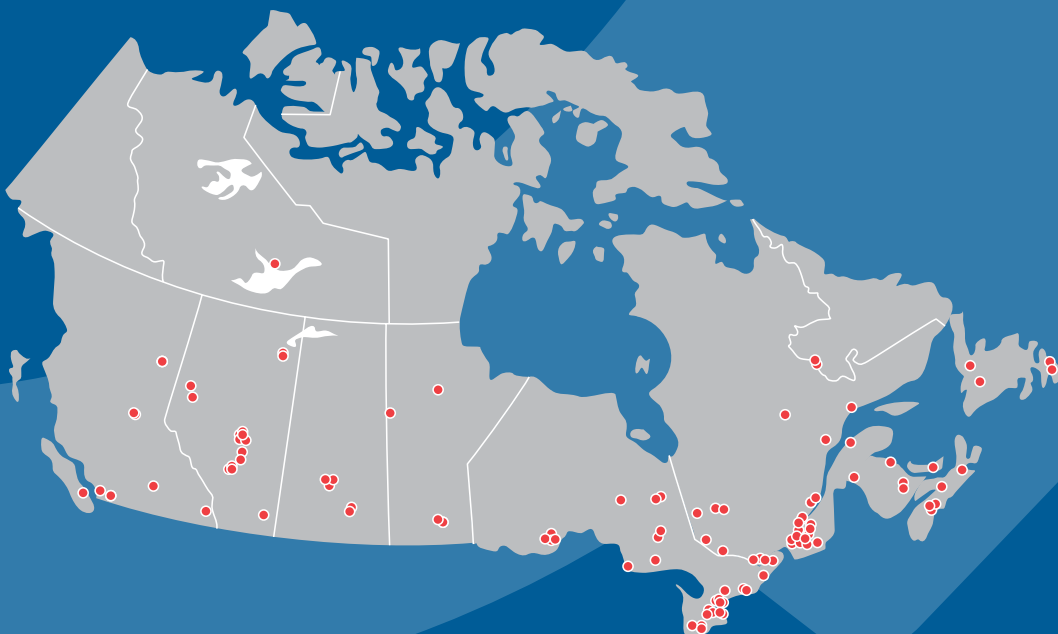
## BEARINGS+POWER TRANSMISSION PRODUCTS

The National Bearings and Power Transmission product line by Wajax, provides you access to a wide range of high quality components for your MRO and OEM requirements which are produced in ISO9001 and QS9001 certified facilities to our Wajax Engineering standards.

**Our wide range of products include;**

- » Ball bearings, tapered roller, spherical plain, ball bearing inserts and agricultural bearings
- » Mounted units, corrosion resistant, thermoplastic, stainless steel and waterproof
- » Roller chains, leaf chains and conveyor chains
- » Sprockets, sheaves, shaft collars, couplings and bushings
- » Custom manufacturing to meet your MRO / OEM needs

Available from our network of over 100 locations across Canada, our National brand serves a wide range of industries and applications – making your operations more productive. From Material Handling, Food and Beverage, Forestry, Agricultural, Mining, Aggregate to general processing and production – National has the products to meet your needs.



1-877-469-2529