

# NATIONAL

BEARINGS+POWER TRANSMISSION PRODUCTS



[ntl-bpt.com](http://ntl-bpt.com)

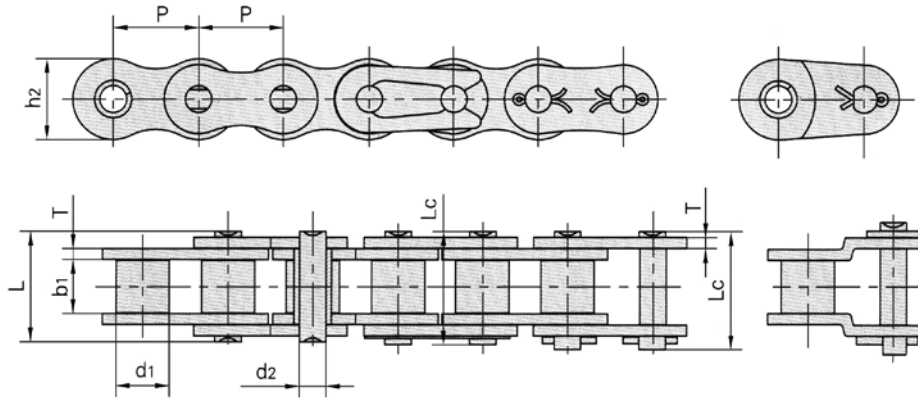
## Chain & Chain Couplings

1-877-469-2529



# ANSI STANDARD CHAIN

## ANSI STANDARD - SINGLE



### Single Strand Standard Roller Chain

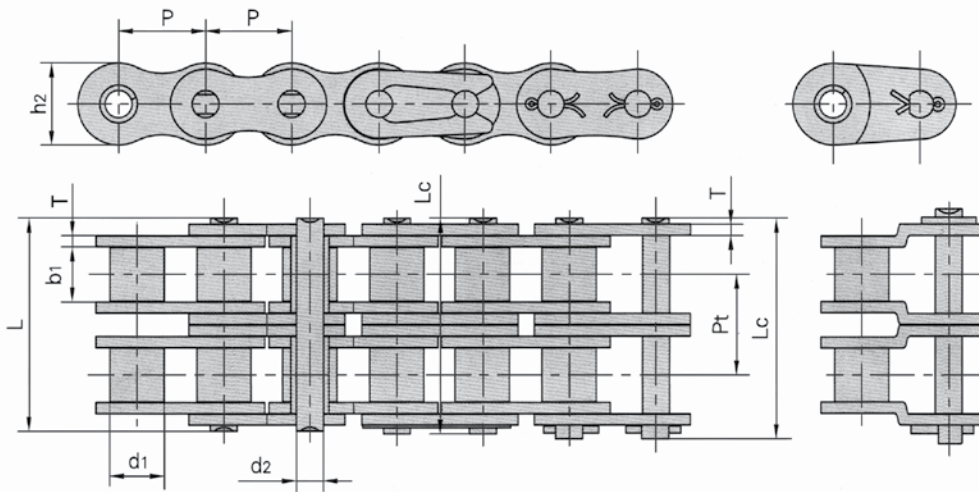
Chain No.	Pitch	Roller Diameter	Width Between Inner Plates	Pin Diameter	Pin Length		Inner Plate Depth	Plate Thickness	Ultimate Tensile Strength	Avg. Tensile Strength	Max. Work Load	App. Wt. Kg/m
	P	d1 max.	b1 min.	d2 max.	L max.	Lc max.	h2 max.	T max.	kN	kN	kN	
25-1R*	6.35	3.3	3.18	2.31	7.8	8.45	5.9	0.80	3.5	4.4	0.63	0.15
35-1R*	9.525	5.08	4.77	3.58	12.15	13.1	8.95	1.30	7.9	9.8	1.41	0.33
41-1R	12.7	7.77	6.25	3.58	13.75	15.4	9.9	1.30	6.7	11.8	1.34	0.41
40-1R	12.7	7.95	7.85	3.96	16.6	17.75	11.9	1.50	14.1	17.0	2.48	0.62
50-1R	15.875	10.16	9.4	5.08	20.9	22.2	15.09	2.03	22.2	26.4	3.65	1.02
60-1R	19.05	11.91	12.57	5.94	25.9	27.5	18	2.42	31.8	38.8	5.49	1.50
80-1R	25.4	15.88	15.75	7.92	32.8	34.9	24.1	3.25	56.7	64.9	9.55	2.60
100-1R	31.75	19.05	18.9	9.53	40	43.2	30.1	4.00	88.5	101.8	14.8	3.91
120-1R	38.1	22.23	25.22	11.1	50.45	53.4	36.1	4.80	127.0	147.0	20.5	5.62
140-1R	44.45	25.4	25.22	12.7	54.2	59	42.1	5.60	172.4	197.7	27.3	7.50
160-1R	50.8	28.58	31.55	14.27	64.3	69.6	48.1	6.40	226.8	260.2	34.8	10.10
200-1R	63.5	39.68	37.85	19.85	80.3	87.2	60	8.00	353.8	405.0	53.7	16.15

\* Rollerless

All pictures may differ from the final products. Product availability and specifications are subject to change without notice.

## ANSI STANDARD CHAIN

### ANSI STANDARD - DOUBLE



### Double Strand Standard Roller Chain

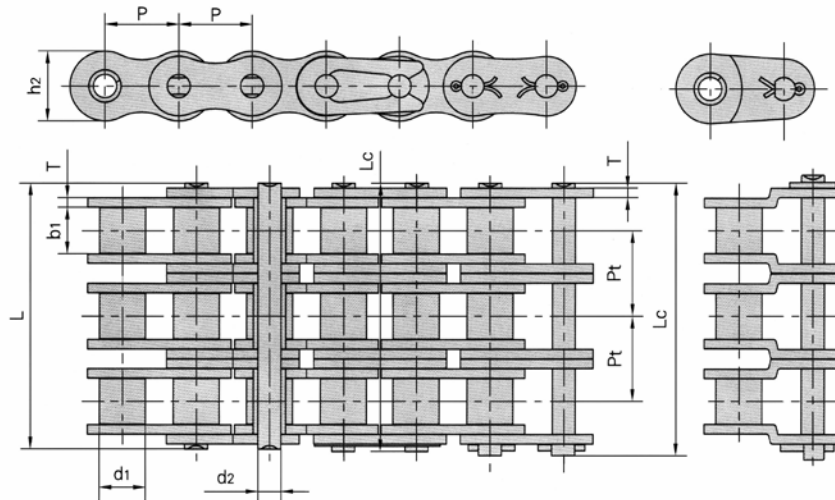
Chain No.	Pitch	Roller Diameter	Width Between Inner Plates	Pin Diameter	Pin Length		Inner Plate Depth	Plate Thickness	Transverse Pitch	Ultimate Tensile Strength	Avg. Tensile Strength	App. Wt. Kg/m
	P	d1 max.	b1 min.	d2 max.	L max.	Lc max.	h2 max.	T max.	Pt	kN	kN	
25-2R*	6.35	3.3	3.18	2.31	14.5	15.15	5.9	0.80	6.4	7.0	8.2	0.28
35-2R*	9.525	5.08	4.77	3.58	22.5	23.4	8.95	1.30	10.13	15.8	18.1	0.63
40-2R	12.7	7.95	7.85	3.96	31.1	32.25	11.9	1.50	14.38	28.2	33.6	1.12
50-2R	15.875	10.16	9.4	5.08	39	40.3	15.09	2.03	18.11	44.4	55.4	2.00
60-2R	19.05	11.91	12.57	5.94	48.8	50.3	18	2.42	22.78	63.6	83.2	2.92
80-2R	25.4	15.88	15.75	7.92	61.9	64.2	24.1	3.25	29.29	113.4	140.0	5.15
100-2R	31.75	19.05	18.9	9.53	76.2	80.5	30.1	4.00	35.76	177.0	202.9	7.80
120-2R	38.1	22.23	25.22	11.1	95.4	99.7	36.1	4.80	45.44	254.0	291.4	11.70
140-2R	44.45	25.4	25.22	12.7	103.1	107.9	42.1	5.60	48.87	344.8	295.5	15.14
160-2R	50.8	28.58	31.55	14.27	122.9	128.1	48.1	6.40	58.55	453.6	520.4	20.14

\* Rollerless

All pictures may differ from the final products. Product availability and specifications are subject to change without notice.

# ANSI STANDARD CHAIN

## ANSI STANDARD - TRIPLE



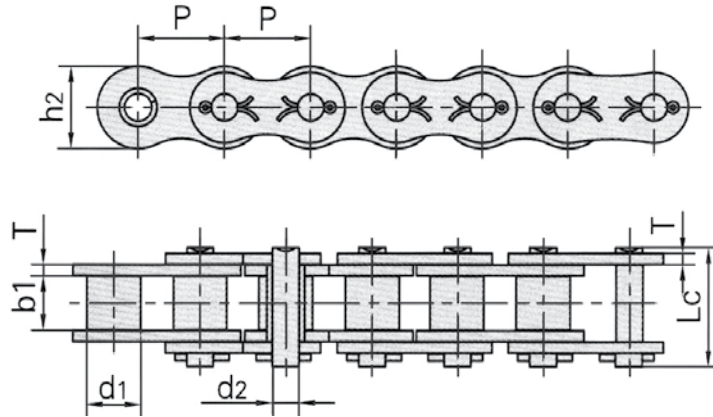
### Triple Strand Standard Roller Chain

Chain No.	Pitch	Roller Diameter	Width Between Inner Plates	Pin Diameter	Pin Length		Inner Plate Depth	Plate Thickness	Transverse Pitch	Ultimate Tensile Strength	Avg. Tensile Strength	App. Wt. Kg/m
	P	d1 max.	b1 min.	d2 max.	L max.	Lc max.	h2 max.	T max.	Pt	kN	kN	
40-3R	12.7	7.95	7.85	3.96	45.6	47	11.9	1.50	14.38	42.3	50.0	1.90
50-3R	15.875	10.16	9.4	5.08	57.4	59.1	15	2.03	18.11	66.6	77.8	3.09
60-3R	19.05	11.91	12.57	5.94	71.5	73.2	18	2.42	22.78	95.4	111.1	4.54
80-3R	25.4	15.88	15.75	7.92	91.6	93.3	24.1	3.25	29.29	170.1	198.4	7.89

\* Rollerless

## ANSI STANDARD CHAIN

### ANSI STANDARD - COTTERED



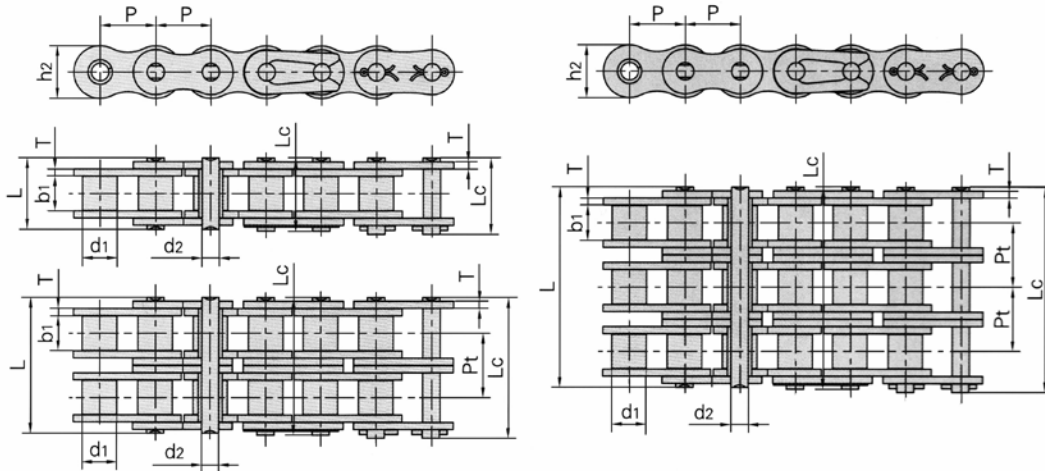
### Single Strand Standard Roller Chain - Cottered Type

Chain No.	Pitch	Roller Diameter	Width Between Inner Plates	Pin Diameter	Pin Length	Inner Plate Depth	Plate Thickness	Ultimate Tensile Strength	Avg. Tensile Strength	App. Wt. Kg/m
	P	d1 max.	b1 min.	d2 max.	Lc max.	h2 max.	T max.	kN	kN	
50-1C	15.875	10.16	9.4	5.08	22.2	15.09	2.03	22.2	29.4	1.02
60-1C	19.05	11.91	12.57	5.94	27.5	18	2.42	31.8	41.5	1.50
80-1C	25.4	15.88	15.75	7.92	34.9	24.1	3.25	56.7	69.4	2.60
100-1C	31.75	19.05	18.9	9.53	43.2	30.1	4.00	88.5	109.2	3.91
120-1C	38.1	22.23	25.22	11.1	53.4	36.1	4.80	127.0	156.3	5.62
140-1C	44.45	25.4	25.22	12.7	59	42.1	5.60	172.4	212.0	7.50
160-1C	50.8	28.58	31.55	14.27	69.6	48.1	6.40	226.8	278.9	10.10
200-1C	63.5	39.68	37.85	19.85	87.2	60	8.00	353.8	431.6	16.15

All pictures may differ from the final products. Product availability and specifications are subject to change without notice.

# ANSI STANDARD CHAIN

## ANSI STANDARD - HEAVY



### Standard Roller Chain Heavy Series

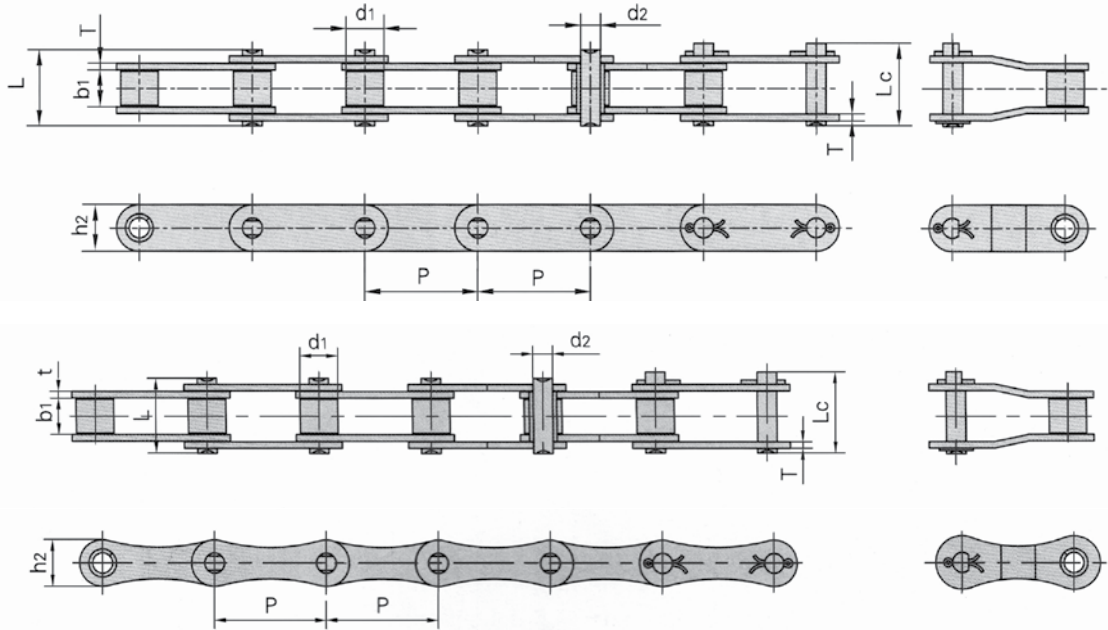
Chain No.	Pitch	Roller Diameter	Width Between Inner Plates	Pin Diameter	Pin Length		Inner Plate Depth	Plate Thickness	Ultimate Tensile Strength	Avg. Tensile Strength	App. Wt. Kg/m
	P	d1 max.	b1 min.	d2 max.	L max.	Lc max.	h2 max.	T max.	kN	kN	
50H	15.875	10.16	9.4	5.08	22.1	23.4	15.09	2.42	22.2	30.2	1.25
60H	19.05	11.91	12.57	5.94	48.8	50.3	18	3.25	31.8	42.7	1.87
80H	25.4	15.88	15.75	7.92	61.9	64.2	24.1	4	56.7	71.4	3.10
100H	31.75	19.05	18.9	9.53	76.2	80.5	30.1	4.8	88.5	112.4	4.52
120H	38.1	22.23	25.22	11.1	95.4	99.7	36.1	5.6	127.0	160.9	6.60

All pictures may differ from the final products. Product availability and specifications are subject to change without notice.

## ANSI STANDARD CHAIN

### ANSI STANDARD - DOUBLE-PITCH

Small  
Roller Type



### Double-Pitch Roller Chain

Chain No.	Pitch	Roller Diameter	Width Between Inner Plates	Pin Diameter	Pin Length		Inner Plate Depth	Plate Thickness	Ultimate Tensile Strength	Avg. Tensile Strength	App. Wt. Kg/m
	P	d1 max.	b1 min.	d2 max.	L max.	Lc max.	h2 max.	t/T max.	kN	kN	
A2040	25.4	7.95	7.85	3.96	16.6	17.8	12	1.5	14.1	16.7	.5
A2050	31.75	10.16	9.4	5.08	20.7	22.2	15	2.03	22.2	28.1	.78
C2040	25.4	7.95	7.85	3.96	16.6	17.8	12	1.5	14.1	16.7	.5
C2042	25.4	15.88	7.85	3.96	16.6	17.8	12	1.5	14.1	16.7	.84
C2050	31.75	10.16	9.4	5.08	20.7	22.2	15	2.03	22.2	28.1	.78
C2052	31.75	19.05	9.4	5.08	20.7	22.2	15	2.03	22.2	28.1	1.27

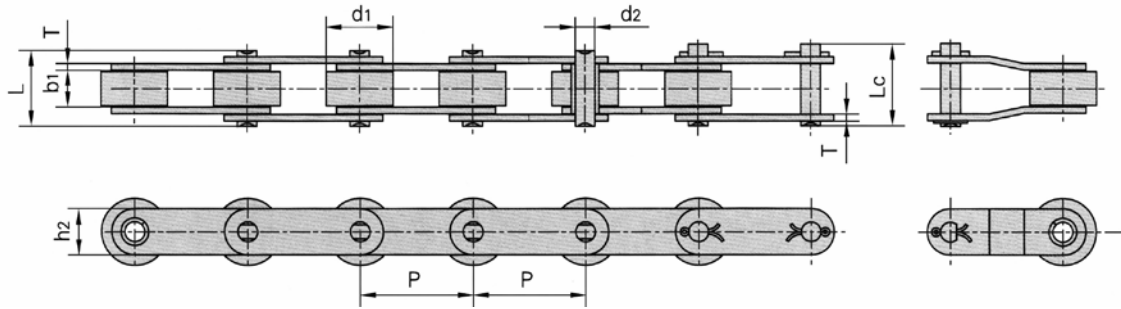
All pictures may differ from the final products. Product availability and specifications are subject to change without notice.



# ANSI STANDARD CHAIN

## ANSI STANDARD - DOUBLE-PITCH (COND'T)

Large  
Roller Type



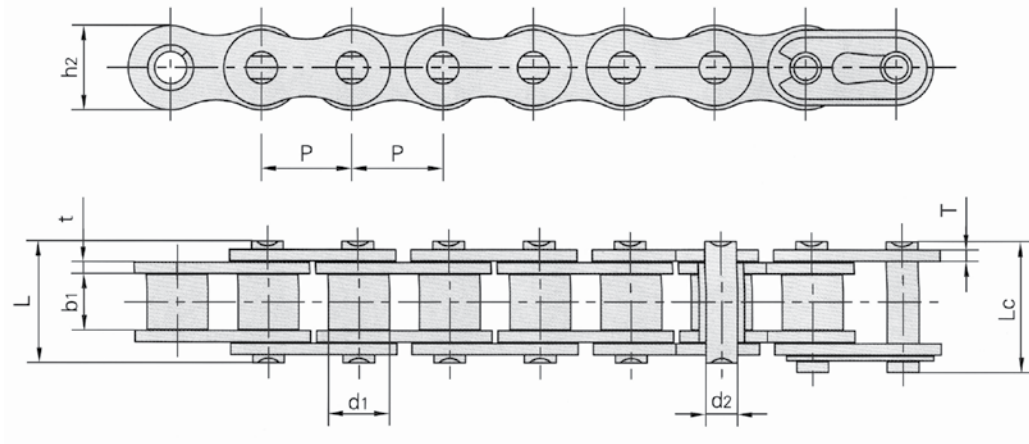
### Double-Pitch Roller Chain

Chain No.	Pitch	Roller Diameter	Width Between Inner Plates	Pin Diameter	Pin Length		Inner Plate Depth	Plate Thickness	Ultimate Tensile Strength	Avg. Tensile Strength	App. Wt. Kg/m
	P	d1 max.	b1 min.	d2 max.	L max.	Lc max.	h2 max.	T max.	kN	kN	
C2060H	38.1	11.91	12.57	5.94	29.2	31.6	18	3.25	31.8	41.6	1.44
C2062H	38.1	22.23	12.57	5.94	29.2	31.6	18	3.25	31.8	41.6	2.07
C2080H	50.8	15.88	15.75	7.92	36.2	39.4	24	4	56.7	70	2.54
C2082H	50.8	28.58	15.75	7.92	36.2	39.4	24	4	56.7	70	3.58
C2100H	63.5	19.05	18.9	9.53	40.4	44.7	30	4	88.5	102.6	3.01
C2120H	76.2	22.23	25.22	11.1	50.3	54.3	35.7	4.8	127	147.3	4.66
C2160H	101.6	28.58	31.75	14.27	64.8	69.6	47.8	6.4	226.8	278.9	8.15

All pictures may differ from the final products. Product availability and specifications are subject to change without notice.

## ANSI STANDARD CHAIN

### ANSI STANDARD - MOTORCYCLE



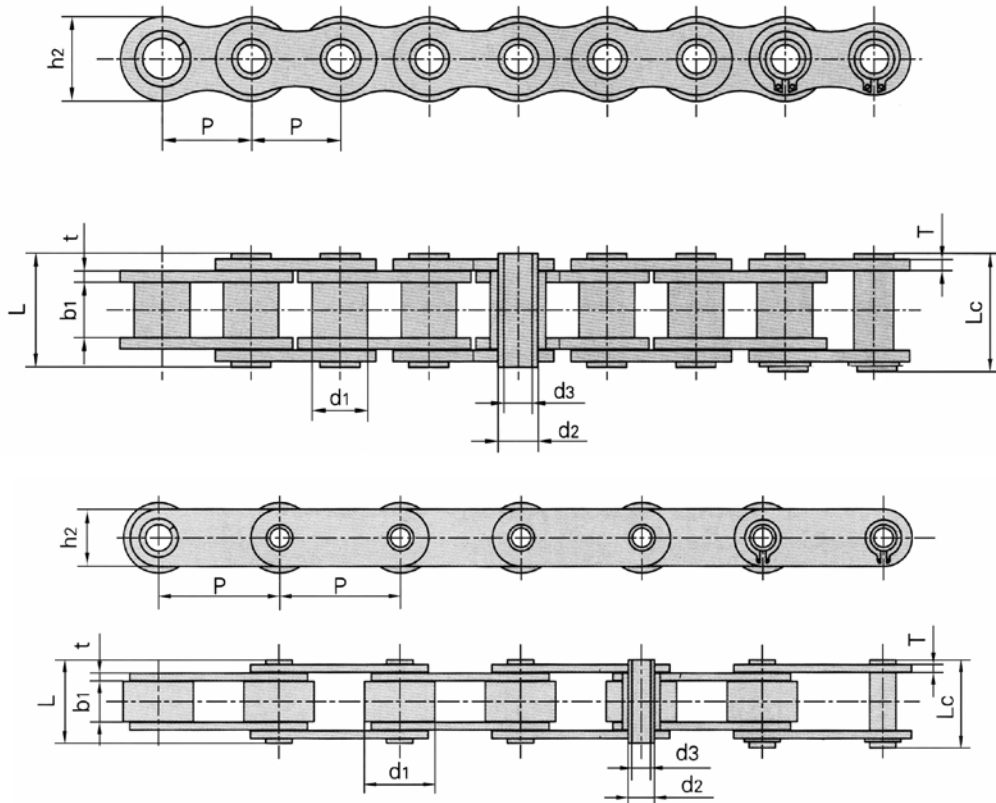
### Motorcycle Roller Chain

Chain No.	Pitch	Roller Diameter	Width Between Inner Plates	Pin Diameter	Pin Length		Inner Plate Depth	Plate Thickness	Ultimate Tensile Strength	Avg. Tensile Strength	App. Wt. Kg/m
	P	d1 max.	b1 min.	d2 max.	L max.	Lc max.	h2 max.	t/T max.	kN	kN	
420	12.7	7.77	6.25	3.96	14.7	16.1	12	1.50	16.0	18.1	0.55
428	12.7	8.51	7.75	4.45	16.7	18.2	11.8	1.60	18.0	20.1	0.70
520	15.875	10.16	6.25	5.08	17.5	19	15.09	2.03	26.5	29.7	0.89

All pictures may differ from the final products. Product availability and specifications are subject to change without notice.

# ANSI STANDARD CHAIN

## ANSI STANDARD - HOLLOW PIN



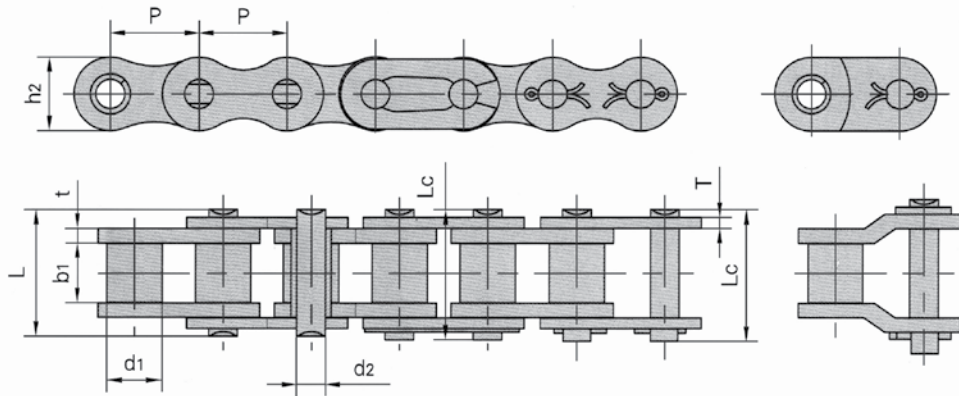
### Single Strand Standard Roller Chain - Hollow Pin

Chain No.	Pitch	Roller Diameter	Width Between Inner Plates	Pin Diameter		Pin Length		Inner Plate Depth	Plate Thickness	Ultimate Tensile Strength	Avg. Tensile Strength	App. Wt. Kg/m
	P	d1 max.	b1 min.	d2 max.	d3 min.	L max.	Lc max.	h2 max.	t/T max.	kN	kN	
40HP	12.7	7.95	7.85	3.96	4	16.5	17.6	12	1.50	11.0	12.2	0.54
50HP	15.875	10.16	9.4	7.03	5.13	20.7	21.9	15.09	2.03	20.0	22.6	0.91
60HP	19.05	11.91	12.70	8.31	6	25.8	26.8	18	2.42	24.0	26.9	1.29
80HP	25.4	15.88	15.75	11.4	8.05	32.5	33.8	24	3.25	50.0	52.0	2.26
C2040HP	25.4	7.95	7.85	5.63	4	16.5	17.6	12	1.50	11	12.6	0.46
C2050HP	31.75	10.16	9.4	7.22	5.12	20.5	21.8	15	2.03	20.4	22.8	0.76
C2060HP	38.1	11.91	12.7	8.31	6	25.8	26.8	17	2.42	24	27.1	1.02

All pictures may differ from the final products. Product availability and specifications are subject to change without notice.

## BRITISH STANDARD CHAIN

### BRITISH STANDARD - SIMPLEX



### British Standard Roller Chain

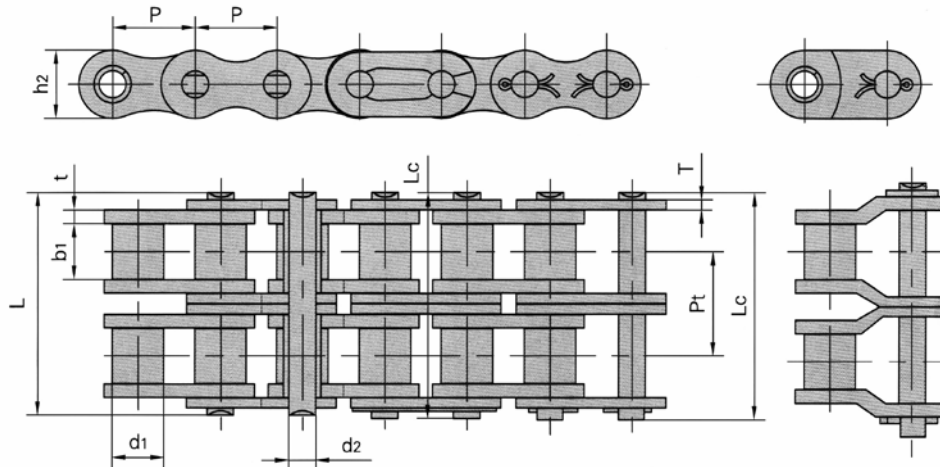
Chain No.	Pitch	Roller Diameter	Width Between Inner Plates	Pin Diameter	Pin Length		Inner Plate Depth	Plate Thickness	Ultimate Tensile Strength	Avg. Tensile Strength	Max. Work Load	App. Wt. Kg/m
	P	d1 max.	b1 max.	d2 max.	L max.	Lc max.	h2 max.	t/T max.	kN	kN	kN	
04B-1	6	4	2.8	1.85	6.8	7.8	5	0.60	3	3.2		.11
05B-1	8	5	3	2.31	8	8.9	7.11	0.80	5	5.8		.2
06B-1*	9.525	6.35	5.72	3.28	13.2	14.2	8.2	1.30	9	10	.82	.41
08B-1	12.7	8.51	7.75	4.45	16.7	18	11.8	1.60	18	19.3	1.2	.69
10B-1	15.875	10.16	9.65	5.08	19.6	21	14.7	1.70	22.4	26.5	3.33	.93
12B-1	19.05	12.07	11.68	5.72	22.5	24	16.1	1.85	29	32.2	3.72	1.15
16B-1	25.4	15.88	17.02	8.28	36	37.2	21.05	4.15/3.10	60	70.5	9.53	2.71
20B-1	31.75	19.05	19.56	10.19	41.1	44.7	26.31	4.5/3.5	95	101.3	13.5	3.7
24B-1	38.1	25.4	25.4	14.63	53.3	57.5	33.3	6.0/4.8	160	174	19.7	7.1

\* Straight Side Plates

All pictures may differ from the final products. Product availability and specifications are subject to change without notice.

# BRITISH STANDARD CHAIN

## BRITISH STANDARD - DUPLEX



## British Standard Double Strand Roller Chain

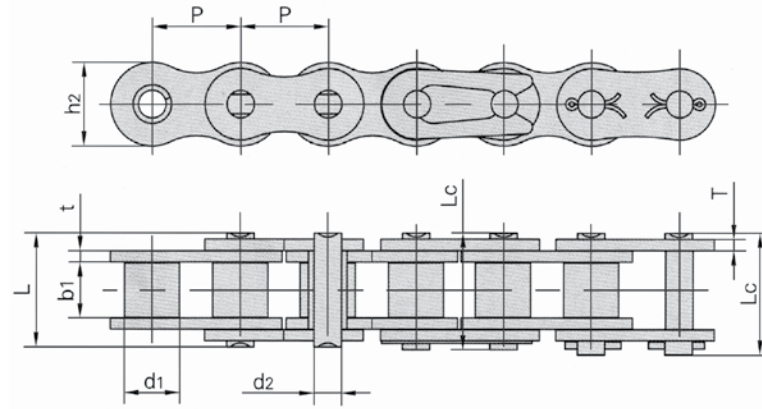
Chain No.	Pitch	Roller Diameter	Width Between Inner Plates	Pin Diameter	Pin Length		Inner Plate Depth	Plate Thickness	Transverse Pitch	Ultimate Tensile Strength	Avg. Tensile Strength	App. Wt. Kg/m
	P	d1 max.	b1 max.	d2 max.	L max.	Lc max.	h2 max.	t/T max.	P1	kN	kN	
06B-2*	9.525	6.35	5.72	3.28	23.5	24.5	8.2	1.30	10.24	16.9	17.9	.77
08B-2	12.7	8.51	7.75	4.45	31	32.1	11.8	1.60	13.92	32	37.4	1.34
10B-2	15.875	10.16	9.65	5.08	36.2	37.5	14.7	1.70	16.59	44.5	54.2	1.84
12B-2	19.05	12.07	11.68	5.72	42.1	43.6	16.1	1.85	19.46	57.8	65.7	2.31
16B-2	25.4	15.88	17.02	8.28	67.5	69.1	21.05	4.15/3.10	31.88	106	124.5	5.42
20B-2	31.75	19.05	19.56	10.19	77.2	80.9	26.3	4.5/3.5	36.45	170	210	7.2
24B-2	38.1	25.4	25.4	14.63	101.6	105.9	33.3	6.0/4.8	48.36	280	304.5	13.4

\* Straight Side Plates

All pictures may differ from the final products. Product availability and specifications are subject to change without notice.

## CORROSION RESISTANT CHAIN

### ANSI STANDARD - STAINLESS STEEL



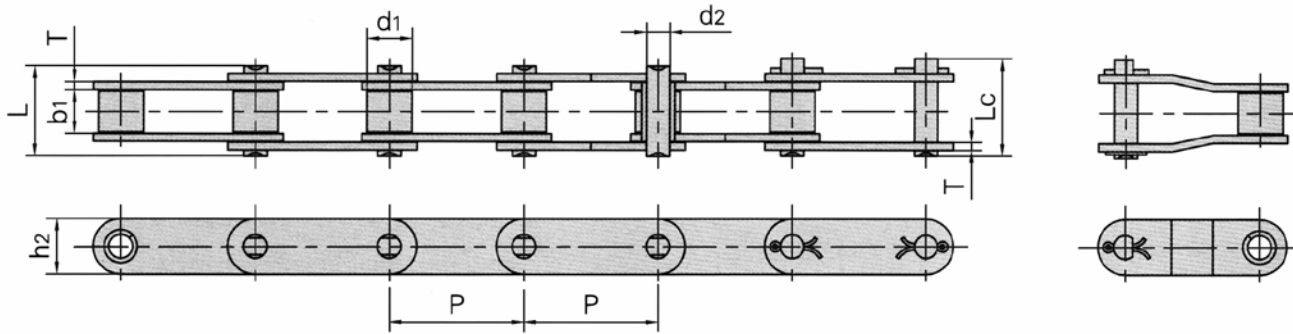
### Stainless Steel Roller Chain

Chain No.	Pitch	Roller Diameter	Width Between Inner Plates	Pin Diameter	Pin Length		Inner Plate Depth	Plate Thickness	Breaking Load	App. Wt. Kg/m
					L max.	Lc max.				
Single Strand	P	d1 max.	b1 min.	d2 max.	L max.	Lc max.	h2 max.	t/T max.	kN	
25SS*	6.35	3.3	3.18	2.31	7.9	8.4	6	0.8	2.5	0.15
35SS*	9.525	5.08	4.77	3.58	12.4	13.17	9	1.3	5.5	0.33
40SS	12.7	7.95	7.85	3.96	16.6	17.8	12	1.5	9.6	0.63
50SS	15.875	10.16	9.4	5.08	20.7	22.2	15.09	2.0	15.2	1.03
60SS	19.05	11.91	12.57	5.94	25.9	27.7	18	2.4	21.7	1.51
80SS	25.4	15.88	15.75	7.92	32.7	35	24	3.3	38.9	2.62

\* Straight Side Plates

# CORROSION RESISTANT CHAIN

## ANSI STANDARD - DOUBLE-PITCH STAINLESS STEEL



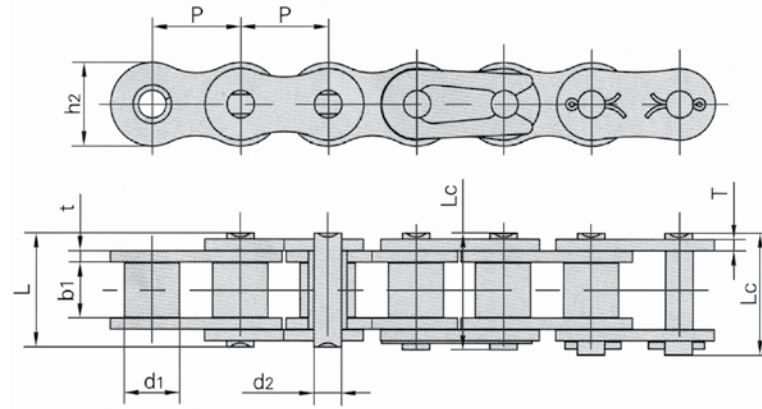
### Stainless Steel Double-Pitch Conveyor Chain

Chain No.	Pitch	Roller Diameter	Width Between Inner Plates	Pin Diameter	Pin Length		Inner Plate Depth	Plate Thickness	Breaking Load	App. Wt. Kg/m
					L max.	Lc max.				
C2040SS	P	d1 max.	b1 min.	d2 max.	L max.	Lc max.	h2 max.	T max.	kN	
C2040SS	25.4	7.95	7.85	3.96	16.6	17.8	12	1.5	9.6	.51
C2050SS	31.75	10.16	9.4	5.08	20.7	22.2	15	2.03	15.2	.79
C2060HSS	38.1	11.91	12.57	5.94	29.2	31.6	18	3.25	21.7	1.46
C2080HSS	50.8	15.88	15.75	7.92	36.2	39.4	24	4	38.9	2.57

All pictures may differ from the final products. Product availability and specifications are subject to change without notice.

## CORROSION RESISTANT CHAIN

### BRITISH STANDARD - STAINLESS STEEL



### British Standard Stainless Steel Roller Chain

Chain No.	Pitch	Roller Diameter	Width Between Inner Plates	Pin Diameter	Pin Length		Inner Plate Depth	Plate Thickness	Breaking Load	App. Wt. Kg/m
					L max.	Lc max.				
Single Strand	P	d1 max.	b1 max.	d2 max.	L max.	Lc max.	h2 max.	t/T max.	kN	
06BSS*	9.525	6.35	5.72	3.28	13.15	14.1	8.2	1.3	6.2	.41
08BSS	12.7	8.51	7.75	4.45	16.7	18.2	11.8	1.6	12	.7
10BSS	15.875	10.16	9.65	5.08	19.5	20.9	14.7	1.7	14.5	.94
12BSS	19.05	12.07	11.68	5.72	22.5	24.2	16	1.85	18.5	1.16
16BSS	25.4	15.88	17.02	8.28	36.1	37.4	21	4.15	40	2.73

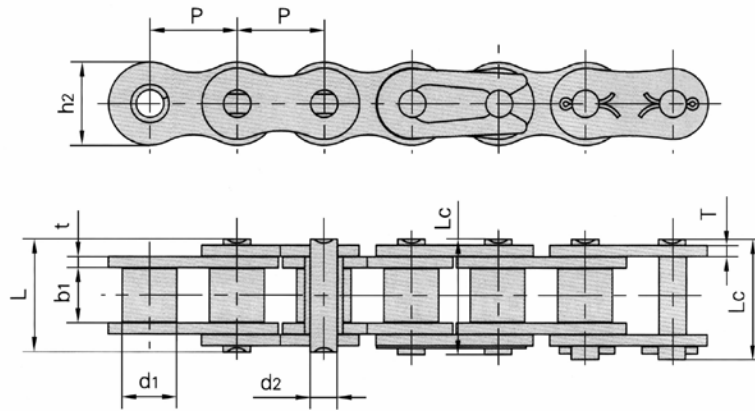
\* Straight Side Plates

All pictures may differ from the final products. Product availability and specifications are subject to change without notice.



# CORROSION RESISTANT CHAIN

## ANSI STANDARD - NICKEL PLATE



### Single Strand Standard Roller Chain - Nickel plated

Chain No.	Pitch	Roller Diameter	Width Between Inner Plates	Pin Diameter	Pin Length		Inner Plate Depth	Plate Thickness	Ultimate Tensile Strength	Avg. Tensile Strength	Max. Work Load	App. Wt. Kg/m
	P	d1 max.	b1 min.	d2 max.	L max.	Lc max.	h2 max.	t/T max.	kN	kN	kN	
40NP	12.7	7.95	7.85	3.96	16.6	17.75	12	1.50	14.1	17.0	2.48	0.62
50NP	15.875	10.16	9.4	5.08	20.9	22.2	15.09	2.03	22.2	26.4	3.65	1.02
60NP	19.05	11.91	12.57	5.94	25.9	27.5	18	2.42	31.8	38.8	5.49	1.50
80NP	25.4	15.88	15.75	7.92	32.8	34.9	24.1	3.25	56.7	64.9	9.55	2.60

All pictures may differ from the final products. Product availability and specifications are subject to change without notice.

## FORK LIFT TRUCK LEAF CHAIN

### LEAF CHAIN

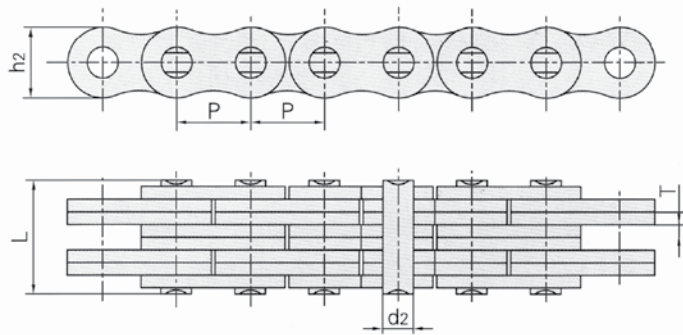
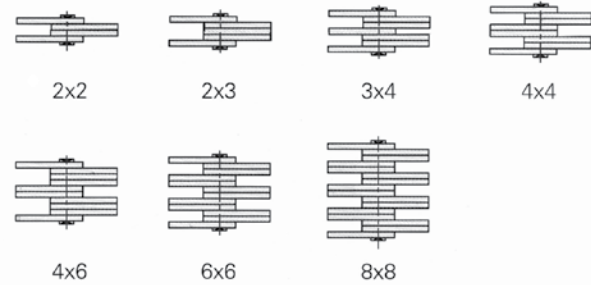


Plate lacing



### Leaf Chain - BL Series

Chain No.	Pitch	Lacing	Plate Thickness	Plate Depth	Pin Diameter	Pin Length	Ultimate Tensile Strength	Avg. Tensile Strength	App. Wt. Kg/m
	P		h2	T	d2	L	kN	kN	
BL 423	12.7	2 X 3	2.08	12.7	5.09	13.16	22.2	27.6	.8
BL 434	12.7	3 X 4	2.08	12.7	5.09	17.4	33.4	41.4	1.12
BL 446	12.7	4 X 6	2.08	12.7	5.09	23.75	44.5	56	1.6
BL 523	15.875	2 X 3	2.44	15.09	5.96	15.37	33.4	42.8	1.1
BL 534	15.875	3 X 4	2.44	15.09	5.96	20.32	48.9	63.6	1.5
BL 544	15.875	4 X 4	2.44	15.09	5.96	22.78	66.7	84.5	1.8
BL 546	15.875	4 X 6	2.44	15.09	5.96	27.74	66.7	84.5	2.2
BL 566	15.875	6 X 6	2.44	15.09	5.96	32.69	100.1	125.1	2.65
BL 623	19.05	2 X 3	3.3	18.11	7.94	20.73	48.9	63.6	1.8
BL 634	19.05	3 X 4	3.3	18.11	7.94	27.43	75.6	102.6	2.5
BL 644	19.05	4 X 4	3.3	18.11	7.94	30.78	97.9	122.3	2.9
BL 646	19.05	4 X 6	3.3	18.11	7.94	37.49	97.9	122.3	3.6
BL 823	25.4	2 X 3	4.09	24.13	9.54	25.48	84.5	108.2	2.7
BL 834	25.4	3 X 4	4.09	24.13	9.54	33.76	129	143.6	3.8
BL 844	25.4	4 X 4	4.09	24.13	9.54	37.9	169	214.6	4.3
BL 846	25.4	4 X 6	4.09	24.13	9.54	46.18	169	214.6	5.4
BL 866	25.4	6 X 6	4.09	24.13	9.54	54.46	253.6	324.5	6.5
BL 1023	31.75	2 X 3	4.9	30.18	11.11	30.33	115.6	146.8	4.3
BL 1034	31.75	3 X 4	4.9	30.18	11.11	40.23	182.4	231.6	6
BL 1066	31.75	6 X 6	4.9	30.18	11.11	65	347	430.3	10.3
BL 1434	44.45	3 X 4	42.24	6.55	14.29	53.37	315.8	372.6	10.6
BL 1446	44.45	4 X 6	42.24	6.55	14.29	73.18	382.6	451.2	15.2
BL 1666	50.8	6 X 6	48.26	7.52	17.46	99.57	857.4	1000.7	24
BL 1688	50.8	8 X 8	48.26	7.52	17.46	129.84	1156.5	1364.6	32.0

All pictures may differ from the final products. Product availability and specifications are subject to change without notice.

# FORK LIFT TRUCK LEAF CHAIN

## LEAF CHAIN

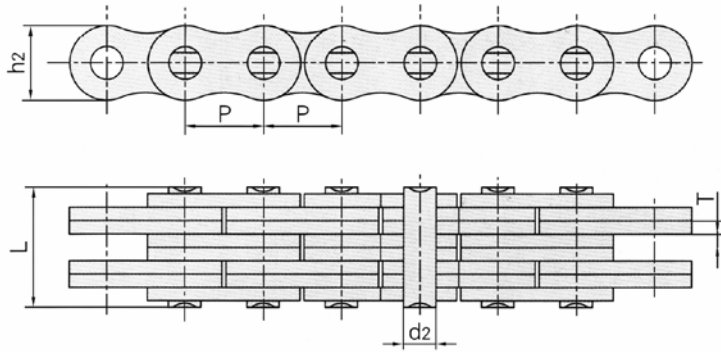
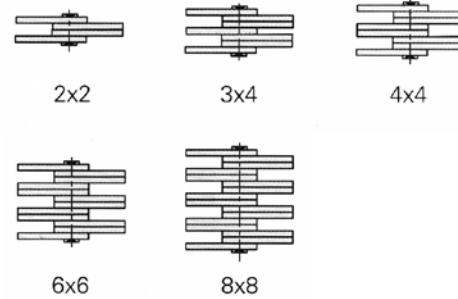


Plate lacing



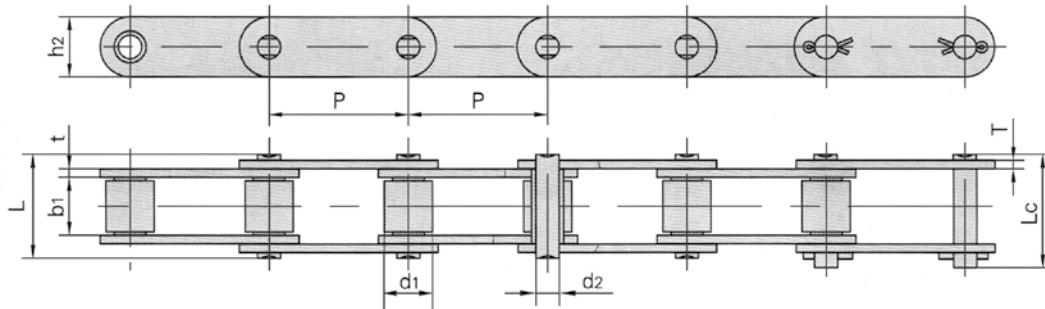
### Leaf Chain - AL Series

Chain No.	Pitch	Lacing	Plate Thickness	Plate Depth	Pin Diameter	Pin Length	Ultimate Tensile Strength	Avg. Tensile Strength
	P		h2	T	d2	L		
AL 422	12.7	2 X 2	1.52	9.7	3.96	8.5	14.1	17
AL 444	12.7	4 X 4	1.52	9.7	3.96	14.9	28.2	35.4
AL 466	12.7	6 X 6	1.52	9.7	3.96	20.8	42.3	53
AL 522	15.875	2 X 2	2	12.9	5.08	10.7	22.24	27.6
AL 544	15.875	4 X 4	2	12.9	5.08	19	44.48	54.7
AL 566	15.875	6 X 6	2	12.9	5.08	27.1	66.72	82.2
AL 622	19.05	2 X 2	2.4	15.5	5.94	12.5	37	44.7
AL 644	19.05	4 X 4	2.4	15.5	5.94	22.4	64	77
AL 666	19.05	6 X 6	2.4	15.5	5.94	32.1	101	121.6
AL 822	25.4	2 X 2	3.2	20.5	7.92	16.5	56.7	68.2
AL 844	25.4	4 X 4	3.2	20.5	7.92	29.4	113.4	135.3
AL 866	25.4	6 X 6	3.2	20.5	7.92	42.4	170	202.9
AL 1022	31.75	2 X 2	4	26	9.52	20.3	88.5	107.6
AL 1044	31.75	4 X 4	4	26	9.52	36.7	177	204.2
AL 1066	31.75	6 X 6	4	26	9.52	52.6	265	315.9
AL 1222	38.1	2 X 2	4.9	31	11.1	25.4	127	151.6
AL 1244	38.1	4 X 4	4.9	31	11.1	45.2	254	300.2
AL 1266	38.1	6 X 6	4.9	31	11.1	65	381	426.3
AL 1422	44.45	2 X 2	5.6	36.5	12.7	28.6	180.3	206.3
AL 1444	44.45	4 X 4	5.6	36.5	12.7	50.6	372.7	414.
AL 1466	44.45	6 X 6	5.6	36.5	12.7	73.4	559	620.5
AL 1622	50.8	2 X 2	6.4	41.6	14.27	32.4	230	264.1
AL 1644	50.8	4 X 4	6.4	41.6	14.27	58	471	523.6
AL 1666	50.8	6 X 6	6.4	41.6	14.27	84.4	706	784.9

All pictures may differ from the final products. Product availability and specifications are subject to change without notice.

## CONVEYOR CHAIN

### CONVEYOR CHAIN



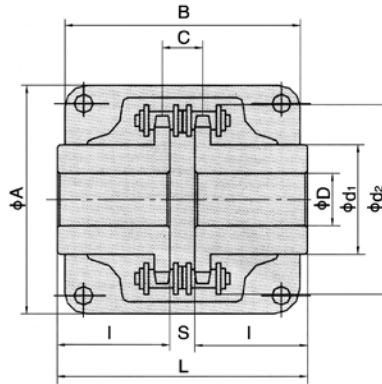
### Conveyor Chain - 81X

Chain No.	Pitch	Roller Diameter	Width Between Inner Plates	Pin Diameter	Pin Length		Inner Plate Depth	Plate Thickness	Ultimate Tensile Strength	Avg. Tensile Strength	App. Wt. Kg/m
	P	d1 max.	b1 min.	d2 max.	L max.	Lc max.	h2 max.	t/T max.	kN	kN	
81X	66.27	23	27.00	11.1	49	53.5	28.5	4	106.7	128.9	3.78
81XH	66.27	23	27.78	11.1	60.7	65.1	31.35	7.94/5.55	151.9	175.7	5.88
81XHH	66.27	23	27.78	11.1	65.6	70	31.35	7.94	191.1	212.6	6.70

# CHAIN COUPLINGS

## CHAIN COUPLINGS

- Stock bore chain couplings are made with solid steel sprockets with hardened teeth.
- Finished bore sprockets come with a key way and two set screws.



Chain Coupling No.	Chain No.	Bore Dia.		Dimensions						Approx. Weight kg	Cover		
		D		L	l	S	d1	d2	C		Dimensions		No.
		Min. mm	Max. mm								A mm	B mm	
4012	4012 CHAIN	12	22	79.4	36.0	7.4	35	61	14.4	0.8	77	72	4012 COVER
4016	4016 CHAIN	14	32	87.4	40.0	7.4	50	77	14.4	1.4	92	75	4016 COVER
5016	5016 CHAIN	16	40	99.7	45.0	9.7	60	96	18.1	2.7	11	85	5016 COVER
5018	5018 CHAIN	16	45	99.7	45.0	9.7	70	106	18.1	3.8	122	85	5018 COVER
6018	6018 CHAIN	20	56	123.5	56.0	11.5	85	128	22.8	6.2	142	106	6018 COVER
6020	6020 CHAIN	20	60	123.5	56.0	11.5	98	140	22.8	7.8	158	105	6020 COVER
6022	6022 CHAIN	20	71	123.4	56.0	11.5	110	152	22.8	10.4	168	117	6022 COVER
8018	8018 CHAIN	20	80	141.2	63.0	15.2	110	170	29.3	12.7	190	129	8018 COVER
8020	8020 CHAIN	20	90	145.2	65.0	15.2	120	186	29.3	16.0	210	137	8020 COVER

### Normal stock sizes

- Coupling stock finished bores.
- Number include standard key way and set screw.

Coupling No.	D (inch)																
4012	1/2	5/8	3/4														
4016	5/8	3/4	7/8	15/16	1	1 1/8	1 3/16	1 1/4									
5016	3/4	7/8	1	1 1/8	1 3/16	1 1/4	1 3/8	1 7/16	1 1/2	1 5/8							
5018	3/4	7/8	1	1 1/8	1 3/16	1 1/4	1 3/8	1 7/16	1 1/2	1 5/8	1 3/4	1 7/8	1 15/16				
6018	1	1 1/8	1 3/16	1 1/4	1 3/8	1 7/16	1 1/2	1 5/8	1 3/4	1 7/8	1 15/16	2	2 1/8	2 3/16	2 1/4	2 3/8	2 7/16
6020	1 1/8	1 1/4	1 1/2	1 3/4	1 15/16	2 1/8	2 3/8	2 7/16	2 5/8								
6022	1 1/8	1 3/4	1 7/8	1 15/16	2 1/8	2 3/8	2 7/16	2 5/8	2 3/4	2 7/8							
8018	1 1/8	1 3/4	1 15/16	2	2 1/8	2 3/8	2 7/16	2 5/8	2 7/8	2 15/16							
8020	1 1/2	2 3/16	2 7/16	2 11/16	2 15/16	3 1/8	3 3/8	3 7/16									

All pictures may differ from the final products. Product availability and specifications are subject to change without notice.



## NATIONAL PRODUCTS LIMITED WARRANTY

**WARRANTY OFFERED BY:** This warranty (the “**Warranty**”) applies to all goods, materials, parts and products sold under the NATIONAL brand name or trademark (“**NATIONAL Products**”) by Wajax Industrial Components Limited Partnership or any of its affiliates or related entities (each a “**Wajax Entity**”); the specific Wajax Entity bound by this Warranty (“**Wajax**”) will be the Wajax Entity which is a party to the relevant contract or order with the customer (“**Customer**”) pursuant to which such NATIONAL Products are sold.

**DEFECTS WARRANTED - NATIONAL PRODUCTS:** Subject to the provisions set out in this Warranty document, Wajax warrants that NATIONAL Products are of good workmanship, free of defects in manufacture and material, and conform to Wajax’s specifications as expressly set out in the relevant contract or purchase order, subject to Wajax’s standard tolerances for specifications. If Wajax determines in its sole discretion that any NATIONAL Product (or part thereof) fails to conform with such warranty during the applicable warranty period, and that the terms and conditions of this Warranty have been fully satisfied, then Wajax (in its sole discretion) shall promptly repair or replace such NATIONAL Product (or part thereof) at Wajax’s expense and deliver the same FCA Wajax facilities, or refund the purchase price thereof. The obligations of Wajax under this Warranty shall be strictly limited to repair or replacement of any NATIONAL Product which in Wajax’s sole opinion is defective at the time of delivery of such NATIONAL Product to the Customer, or refund of the purchase price thereof. This Warranty shall apply only to NATIONAL Products sold by Wajax which have been paid for by the Customer. If Wajax elects to repair the NATIONAL Product subject to the warranty claim, the Customer shall be responsible for the removal and transportation thereof to Wajax’s designated facility, provided that if the Customer requests that the repair be done at the Customer’s site, then the Customer will be responsible for the removal thereof and Wajax will only cover the repair time spent on the site. All other expenses will be borne by the Customer. Any required repair shall be performed during Wajax’s normal business hours and if repair is required outside of normal business hours then overtime rates shall apply and the Customer shall pay Wajax’s cost differential for the same. This Warranty is subject to the limitations, warranty period, exclusions and other terms and conditions set out herein. Wajax shall warrant any repaired or replaced parts until the expiration of the original Warranty period.

**WARRANTY PERIOD:** This Warranty shall be restricted to defects in NATIONAL Products present at the time of delivery thereof to the Customer which become manifest during the period of twelve (12) months after the date of delivery of such NATIONAL Products to the Customer. Such period shall: (i) be as stated herein unless otherwise stated in the contract between Wajax and the Customer; and (ii) not be extended by the performance of any subsequent repairs or other remedial work.

**WARRANTY EXCLUSIONS:** This Warranty shall not cover, and Wajax shall not be liable under this Warranty for any damages, costs or expenses of the Customer or of any third party caused or contributed to in whole or in part by, or any defects caused by or related to:

- Any labour not performed by Wajax or defects or faults occurring or emanating as a result of the same.
- Any event or circumstance which arises through no fault of Wajax including, without limitation, disaster, force majeure, accidents, abuse, neglect, chemical, electro-chemical or electrical influences, any form of overload of any NATIONAL Product or any abnormal physical stress or environmental conditions.
- Any incorrect, improper or inadequate installation, assembly, use, storage, inspection, maintenance, handling, removal or transportation of any NATIONAL Product according to all recommendations and instructions of Wajax regarding the NATIONAL Product, and all standard industry practices.
- Any failure of the Customer to comply with all recommendations and instructions of Wajax regarding any NATIONAL Product including, without limitation, any failure of the Customer to service or maintain the NATIONAL Product or any part or component thereof in accordance with the recommended service/maintenance intervals and procedures specified by Wajax, or any use of fuels, oils, additives or any other consumable of a standard not compatible with any such recommended specifications.
- Any acts or omissions of the Customer including, without limitation, any specifications, instructions or designs specified or provided by or on behalf of the Customer.
- Normal wear and tear, or parts that, owing to their inherent material properties or their specified use, are subject to premature wear.
- Any materials or substances being processed by, or by the entry of materials or substances into, any NATIONAL Products including, without limitation debris, moisture, dust, grease or other contamination.

**WARRANTY INVALIDITY:** The Customer’s failure to observe and perform any of the following shall automatically invalidate this Warranty with respect to a NATIONAL Product:

- The Customer must comply with all requirements set out in this Warranty and any applicable contract or purchase order (and related terms and conditions) with respect to such NATIONAL Product.
- Such NATIONAL Product must be installed, assembled, handled, stored, used, operated, inspected, maintained, removed and transported in a proper and prudent manner in accordance with the recommendations and instructions of Wajax, standard industry practices, and all applicable laws.
- In the event of any incident or event giving rise to, or likely to give rise to, a claim under this Warranty, the Customer must take precautions to prevent further damage to such NATIONAL Product. Wajax shall not be liable for any further damage to such NATIONAL Product until it has been repaired to the satisfaction of Wajax.

This Warranty shall be void if the Customer:

- Has willfully concealed or misrepresented any material fact or circumstance concerning this Warranty or such NATIONAL Product (whether before or after a loss), or in case of any fraud or false statement by the Customer relating thereto.
- Transfers title of such NATIONAL Product to a third party, or lends, leases, rents or otherwise releases possession of same, in any manner whatsoever, or becomes bankrupt or placed in receivership such that such NATIONAL Product is seized or taken by a creditor or a third party claiming rights, title or ownership in such NATIONAL Product.
- Causes or permits any reconstruction, repair, alteration or modification of such NATIONAL Product to be made by any person not authorized by Wajax, or if any parts or components not supplied by Wajax are used in connection with any of the foregoing.

**NOTICE OF WARRANTY CLAIMS:** To be effective, a claim under this Warranty must be: (i) made in writing during the applicable warranty period; (ii) sent to Wajax at the Wajax branch where the NATIONAL Product was purchased; and (iii) received by Wajax within ten (10) days of the Customer’s discovery of the defect.

**ADDITIONAL LIMITATIONS:** No suit or action on this Warranty for the recovery of any claim may be sustained in any court of law or equity unless the Customer has complied with all the requirements of this Warranty and unless such suit or action is commenced within three (3) months from the date on which the Customer originally made such claim under this Warranty.

WAJAX’S TOTAL LIABILITY UNDER THIS WARRANTY WITH RESPECT TO ANY NATIONAL PRODUCT, WHETHER THROUGH REPAIR OR REPLACEMENT OF THE NATIONAL PRODUCT OR REFUND OF THE PURCHASE PRICE THEREOF, IS LIMITED TO THE AMOUNT OF THE PURCHASE PRICE ACTUALLY RECEIVED BY WAJAX FROM THE CUSTOMER FOR THE DEFECTIVE NATIONAL PRODUCT. Except for the repair, replacement or refund obligation as expressly provided herein, Wajax shall not be liable for any damages, losses, costs or expenses suffered by the Customer or any other third party of any nature or kind including, without limitation, any direct, indirect, consequential or incidental damages or loss of any kind for any reason, including down-time, loss of revenue or profits, loss of production, loss or diminution of value of property, loss of use of property or facilities, loss of economic opportunity or loss of life or injury by the Customer or any other party whether or not caused by the defective NATIONAL Product or the removal thereof. The remedies set out herein are the Customer’s sole remedies, and are Wajax’s only obligations (whether based on breach of contract, warranty, indemnity or statutory duty or in tort or otherwise), arising out of or in connection with defective or deficient NATIONAL Products.

The Warranty set out herein is the only warranty applicable to the NATIONAL Products. WAJAX EXPRESSLY DISCLAIMS, TO THE MAXIMUM EXTENT PERMITTED BY APPLICABLE LAWS, ANY AND ALL OTHER REPRESENTATIONS, WARRANTIES, COVENANTS, CONDITIONS, GUARANTEES OR SIMILAR OBLIGATIONS, WHETHER EXPRESS OR IMPLIED BY FACT, BY LAW (INCLUDING ANY STATUTE OR REGULATION), BY CUSTOM OR TRADE USAGE OR BY ANY COURSE OF DEALING, INCLUDING, WITHOUT LIMITATION, ANY IMPLIED WARRANTIES OF QUALITY, MERCHANTABILITY, FITNESS FOR PURPOSE AND FITNESS FOR A PARTICULAR PURPOSE, NON-INFRINGEMENT OR OTHERWISE, ALL OF WHICH ARE EXCLUDED AND ARE INAPPLICABLE.

**GOVERNING LAW:** This Warranty is governed by the laws of the Province of Ontario.

# NATIONAL

## BEARINGS+POWER TRANSMISSION PRODUCTS

The National Bearings and Power Transmission product line by Wajax, provides you access to a wide range of high quality components for your MRO and OEM requirements which are produced in ISO9001 and QS9001 certified facilities to our Wajax Engineering standards.

**Our wide range of products include;**

- » Ball bearings, tapered roller, spherical plain, ball bearing inserts and agricultural bearings
- » Mounted units, corrosion resistant, thermoplastic, stainless steel and waterproof
- » Roller chains, leaf chains and conveyor chains
- » Sprockets, sheaves, shaft collars, couplings and bushings
- » Custom manufacturing to meet your MRO / OEM needs

Available from our network of over 100 locations across Canada, our National brand serves a wide range of industries and applications – making your operations more productive. From Material Handling, Food and Beverage, Forestry, Agricultural, Mining, Aggregate to general processing and production – National has the products to meet your needs.



1-877-469-2529